



REPLACEMENT PARTS LIST

1969

Model B44 VICTOR SPECIAL

FROM ENGINE AND FRAME NUMBERS P.C.07723B44V.S.

PC 07723 B44V.S

CATALOGUE NUMBER 00-5146.

1969

ASSEMBLIES COMPLETE

<i>Spares No.</i>	<i>Description</i>
00-3171	TOP OVERHAUL GASKET SET.
00-3313	FULL OVERHAUL GASKET SET.
00-3463	PISTON RING SET (standard).
00-3464	PISTON RING SET (+.010"; .254 mm.).
00-3465	PISTON RING SET (+.020"; .508 mm.).
00-3474	PISTON RING SET (standard, alternative H. & G.).
00-3475	PISTON RING SET (+.010", alternative H. & G.).
00-3476	PISTON RING SET (+.020", alternative H. & G.).
70-9425	ENGINE/GEARBOX UNIT COMPLETE LESS CARBURETTER AND EXHAUST SYSTEM.
70-9398	CRANKCASE COMPLETE WITH FIXED FITTINGS.
70-9548	FLYWHEEL AND CONNECTING ROD ASSEMBLY.
40-3235	CLUTCH ASSEMBLY COMPLETE.
41-805	OIL PUMP COMPLETE.
82-9214	FRAME COMPLETE WITH FIXED FITTINGS.
97-2565	FRONT FORK ASSEMBLY.
68-5554	FRONT WHEEL WITH SPINDLE AND BEARINGS.
68-5535	FRONT HUB WITH SPINDLE AND BEARINGS.
41-6009	REAR WHEEL WITH SPINDLE AND BEARINGS.
41-6022	REAR HUB WITH SPINDLE AND BEARINGS.

PISTON CHART

PISTONS COMPLETE				
Compression Ratio	Standard	+ .010" (.254 mm.)	+ .020" (.508 mm.)	
9.4 : 1	41-793	41-795	41-797	
	COMPRESSION RINGS			
	Taper 41-92 (2)	Taper 41-104 (2)	Taper 41-93 (2)	Standard Fitting
	Top 70-8203 Taper 70-8202	Top 70-8313 Taper 70-8312	Top 70-8293 Taper 70-8291	Alternative Hepworth & Grandage Rings
	SCRAPER RINGS			
	41-98	41-102	41-99	Standard Fitting
	70-8204	70-8314	70-8295	Alternative Hepworth & Grandage Rings

CARBURETTER SETTINGS

Spares Number	Makers Number	Main Jet	Pilot Jet	Throttle Slide	Needle Jet	Needle Position
19-2400	R.930/11	230	25	3	.107	2

INDEX

CYLINDER HEAD, EXHAUST PIPE	Page 8 - 9
CYLINDER AND CRANKSHAFT	10 - 11
CRANKCASE	12 - 13
OIL PUMP, GEARBOX SPROCKET	14 - 15
GEAR CLUSTER	16 - 17
GEARCHANGE MECHANISM	18 - 19
FOOTSTART AND FOOTCHANGE	20 - 23
CLUTCH AND PRIMARY COVER	24 - 25
FRAME, BATTERY CARRIER, REAR BRAKE CONTROL	26 - 27
SWINGING ARM	28 - 29
FOOTRESTS, ENGINE SHIELD	30 - 31
OIL TANK, SIDECOVER, TOOL TRAY	32 - 33
FRONT FORKS	34 - 37
FRONT WHEEL	38 - 39
REAR WHEEL	40 - 41
MUDGUARDS	42 - 43
PETROL TANK, TWINSEAT, HANDLEBAR AND CONTROLS	44 - 47
ELECTRICAL EQUIPMENT	48 - 51
TOOLS AND SUNDRIES	52 - 53
CARBURETTER AND AIR CLEANER	54 - 55

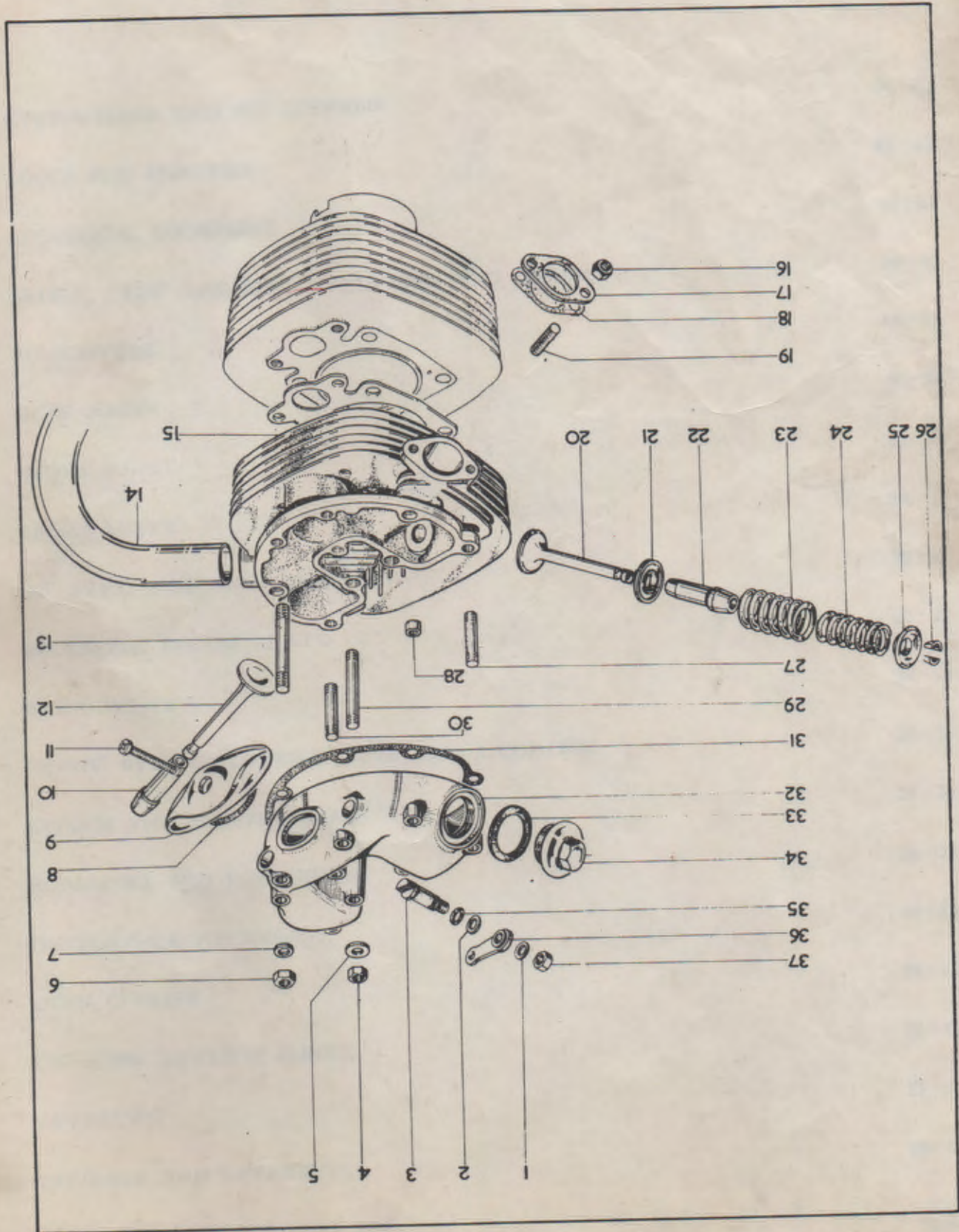


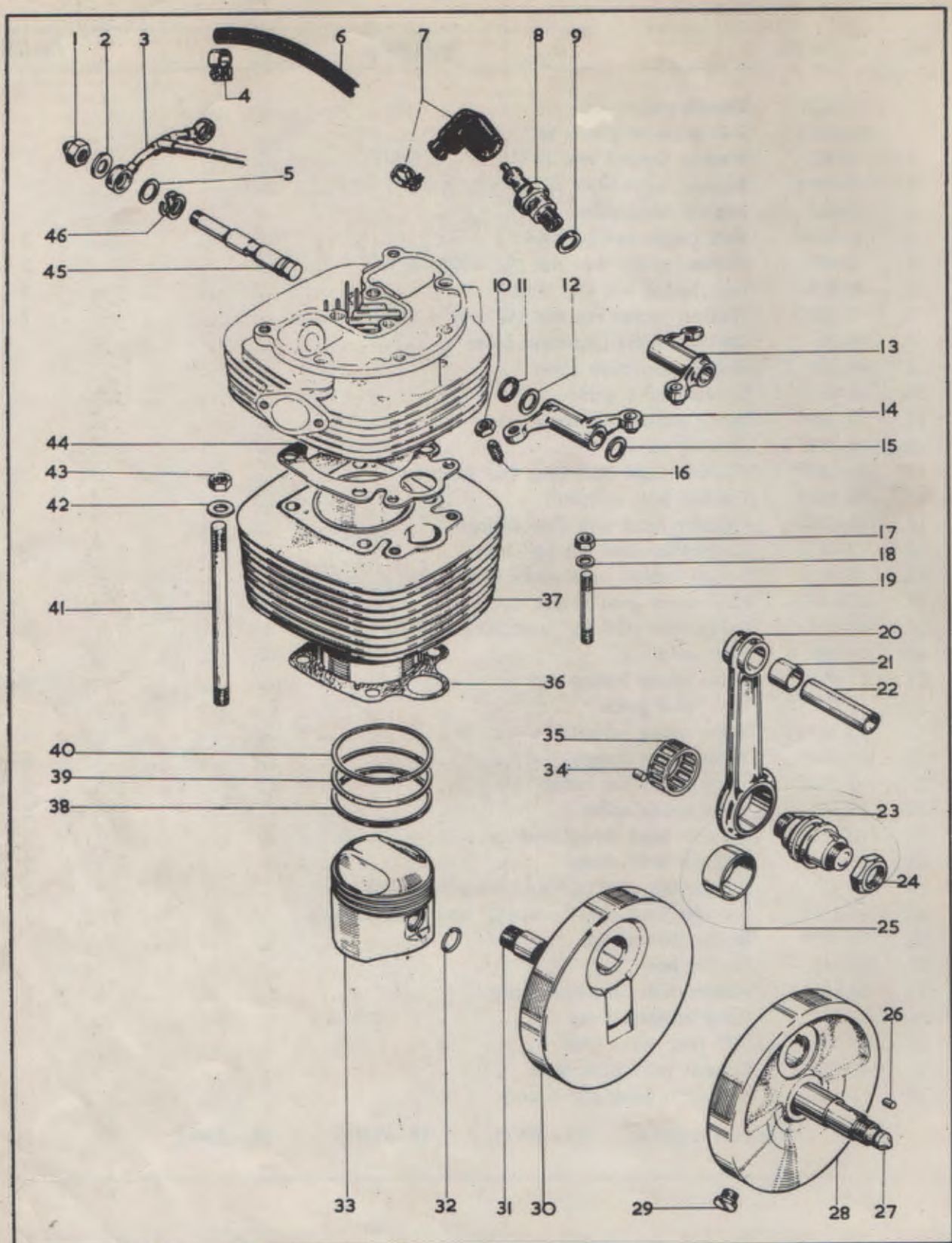
Plate 1

CYLINDER HEAD, EXHAUST PIPE

Code	Spares No.	Description	Per Set
	00-3171	Decoke gasket set	
	00-3313	Full overhaul gasket set	
1.	2-525	Washer, for nut line 37 ($\frac{1}{4}'' \times \frac{1}{2}'' \times .048''$)	
2.	15-5155	Washer, valve lifter ($21/64'' \times \frac{1}{2}'' \times .048''$)	
3.	40-417	Exhaust valve lifter	
4.	24-6040	Nut, rocker box ($\frac{5}{16}''$ B.S.C.)	2
5.	2-923	Washer, rocker box nut ($\frac{5}{16}'' \times \frac{5}{8}'' \times \frac{1}{16}''$)	2
6.	40-209	Nut, rocker box ($\frac{1}{4}''$ B.S.C.)	7
7.	2-525	Washer, rocker box nut ($\frac{1}{4}'' \times \frac{1}{2}'' \times .048''$)	7
8.	40-56	Gasket, rocker inspection cover	
9.	40-208	Rocker inspection cover	
10.	41-633	Exhaust valve guide	
11.	40-309	Screw, rocker inspection cover	
12.	41-789	Exhaust valve	
13.	40-129*	Cylinder head stud, long ($\frac{1}{4}''$ B.S.C./B.S.F. $\times 2-15/16''$)... .. .	3
14.	70-9467	Exhaust pipe complete	
15.	41-784	Cylinder head with fixed fittings	
16.	42-4476	Carburettor stud nut ($\frac{5}{16}''$ B.S.C.)	2
17.	70-7821	Tufnol washer, carburettor joint	
18.	65-1417	Carburettor joint gasket	
19.	68-18*	Carburettor stud ($\frac{5}{16}''$ B.S.C./B.S.F. $\times 1\frac{3}{8}''$)	2
20.	41-788	Inlet valve	
21.	68-931	Valve spring bottom cup	2
22.	41-632	Inlet valve guide	
23.	65-2494	Valve spring (outer)	2
24.	65-2495	Valve spring (inner)	2
25.	40-171	Valve spring top collar	2
26.	40-167	Valve spring collet	4
27.	40-124	Cylinder head dowel stud	2
28.	66-3074	Cylinder head dowel	2
29.	40-127	Rocker box stud ($\frac{5}{16}''$ B.S.C./B.S.F. $\times 2-9/16''$)	2
30.	40-131*	Cylinder head stud, short ($\frac{1}{4}''$ B.S.C./B.S.F. $\times 2\frac{1}{4}''$)	2
31.	70-7857	Rocker box gasket	
32.	40-415	Rocker box	
33.	40-182	Washer, valve inspection cap	2
34.	41-31	Valve inspection cap	2
35.	68-289	"O" ring, valve lifter	
36.	41-176	Exhaust valve lifter lever	
37.	2-443	Nut, valve lifter ($\frac{1}{4}''$ B.S.C.)	

*Special material: 13.—EN15. 19.—EN15. 30.—EN15.

Plate 2

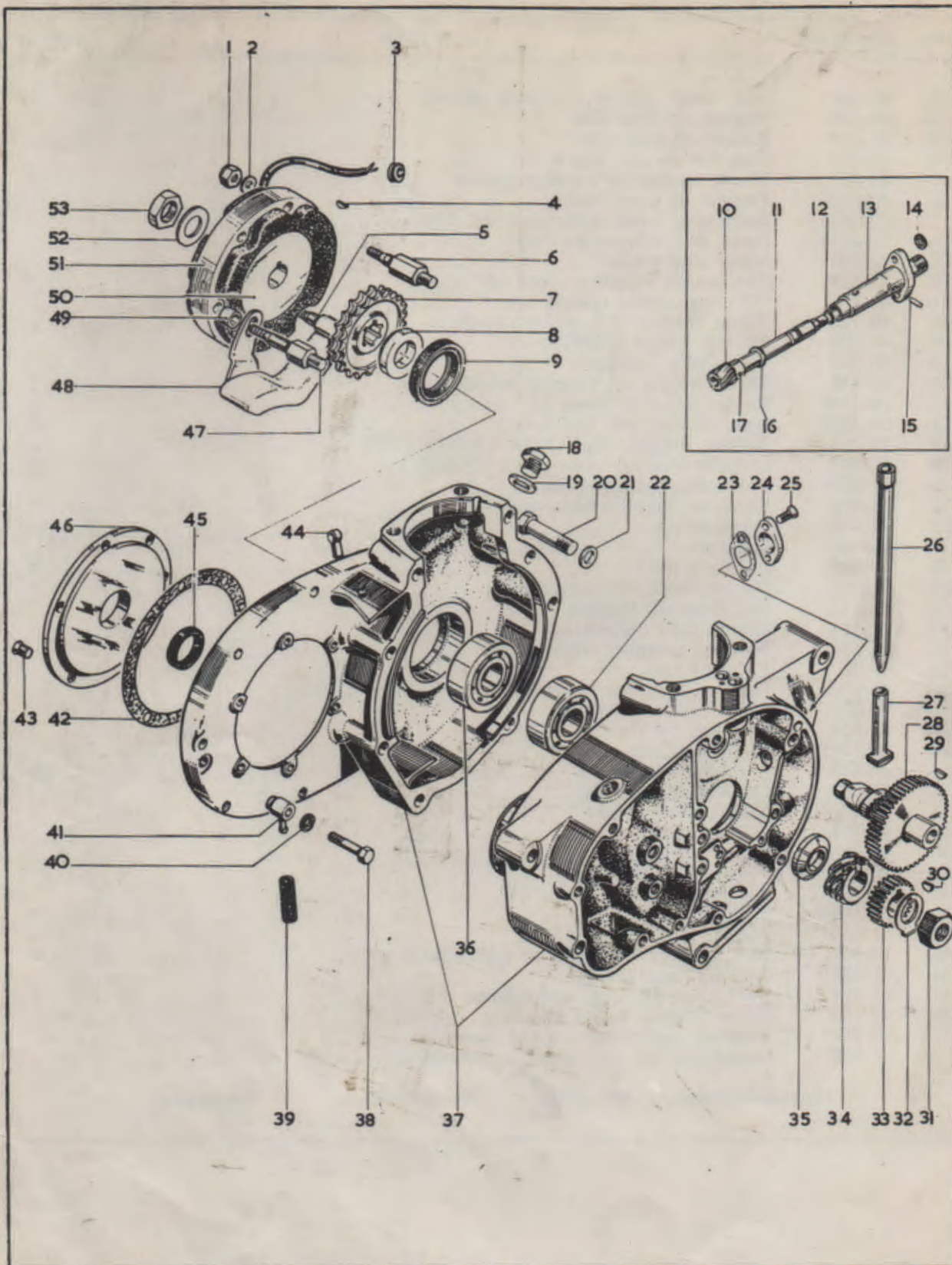


CYLINDER AND CRANKSHAFT

Code	Spares No.	Description	Per Set
1.	40-162	Nut, rocker spindle ($\frac{3}{8}$ " B.S.C. domed)	2
2.	40-159	Washer, oil feed pipe	4
3.	41-807	Rocker oil feed pipe	
4.	62-263	Clip, for oil pipe line 6	
5.	40-157	Thrust washer ($\frac{3}{8}$ " rocker spindle	2
6.	40-1037	Flexible oil pipe, rockers	
7.	19-7625	Spark plug cover (Champion WC.548)	
8.	19-7616	Spark plug (Champion N4)	
9.	66-102	Spark plug washer	
10.	24-563	Nut, rocker adjusting screw ($\frac{5}{16}$ " B.S.C.)	2
11.	40-148	"O" ring, rocker spindle	2
12.	40-158	Thrust washer ($\frac{1}{2}$ " rocker spindle	2
13.	40-296	Exhaust rocker complete	
14.	40-292	Inlet rocker complete	
15.	40-158	Thrust washer ($\frac{1}{2}$ " rocker spindle	2
16.	68-155*	Rocker adjusting screw ($\frac{5}{16}$ " B.S.C.)	2
17.	24-5160	Nut, cylinder stud ($\frac{5}{16}$ " B.S.C.)	2
18.	76-12	Washer, cylinder stud ($21/64" \times 9/16" \times 3/32"$)	2
19.	41-44*	Cylinder stud ($\frac{5}{16}$ " B.S.C./B.S.F. $\times 2-25/32"$)	2
20.	41-549	Connecting rod complete	
21.	66-492	Small-end bush, connecting rod	
22.	41-101	Gudgeon pin	
23.	41-586	Crankpin	
24.	41-588	Crankpin nut	2
25.	41-183	Big-end bush, connecting rod	
26.	41-551	Peg, crankpin location	
27.	41-564	Engine shaft (right-hand)	
28.	41-554	Flywheel complete (right-hand)	
29.	40-43	Flywheel plug	
30.	70-9549	Flywheel complete (left-hand)	
31.	41-579	Engine shaft (left-hand)	
32.	66-954	Gudgeon pin circlip	2
33.	41-793†	Piston complete	
34.	26-650	Crankpin roller	24
35.	40-572	Crankpin roller cage	
36.	70-7727	Cylinder base washer	
37.	41-787	Cylinder barrel	
38.	41-98†	Piston scraper ring	
39.	41-92†	Piston compression ring	
40.	41-92†	Piston compression ring	
41.	21-1964	Stud, cylinder holding	4
42.	41-639	Washer, for nut line 43	4
43.	14-304	Nut, cylinder holding down ($\frac{7}{16}$ " U.N.F.)	4
44.	41-638	Cylinder head gasket	
45.	40-294	Rocker spindle, inlet and exhaust	2
46.	40-156	Spring washer, rocker spindle	
	70-9548	Flywheel and connecting rod assembly	
	41-548	Connecting rod and crankpin assembly	

*Special material: 16.—EN9. 19.—EN14B.

†See page 6.

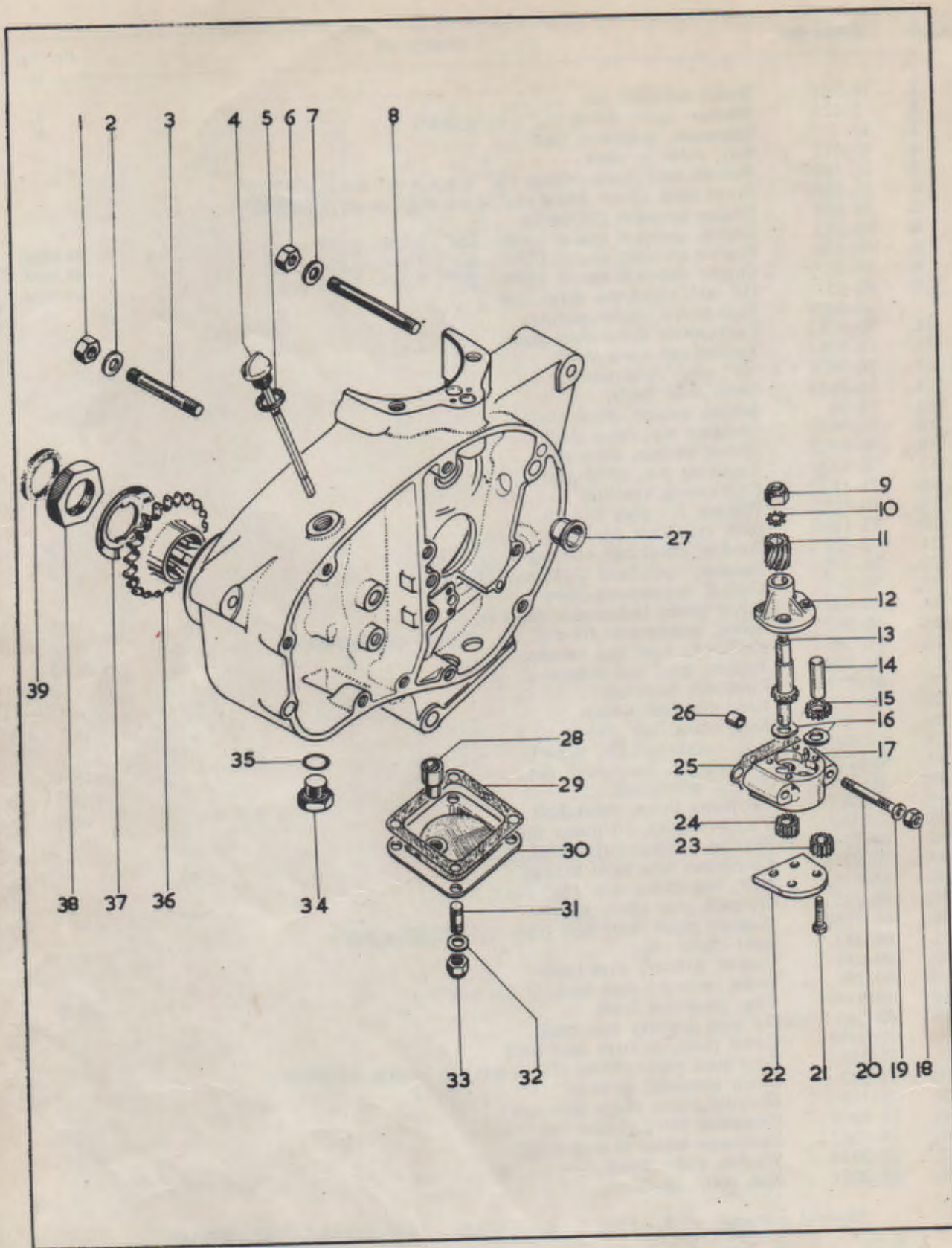


CRANKCASE

Code	Spares No.	Description	Per Set
1.	14-901	Stator self-lock nut ..	3
2.	2-525	Washer, stator fixing ($\frac{1}{4}" \times \frac{1}{2}" \times .048"$) ..	3
3.	40-705	Grommet, generator lead ..	
4.	41-673	Key, rotor to shaft ..	
5.	21-1896*	Bottom stud, stator fixing ($\frac{1}{4}"$ U.N.F. $\times \frac{5}{16}"$ U.N.C. $\times 2-9/16"$) ..	
6.	21-1895*	Front stud, stator fixing ($\frac{1}{4}"$ U.N.F. $\times \frac{5}{16}"$ U.N.C. $\times 2-19/32"$) ..	
7.	41-615	Engine sprocket (28 teeth) ..	
8.	40-325	Engine sprocket spacer (.320—.324"; 8.128—8.229 mm.) ..	as reqd.
8.	40-326	Engine sprocket spacer (.309—.312"; 7.884—7.924 mm.) ..	as reqd.
8.	40-327	Engine sprocket spacer (.294—.297"; 7.467—7.543 mm.) ..	as reqd.
9.	40-25	Oil seal, crankcase drive side ..	
	70-9428	Tachometer drive assembly ..	
10.	70-9382	Tachometer drive shaft gear ..	
11.	70-9381	Tachometer drive shaft ..	
12.	70-9430	"O" ring, drive shaft ..	
13.	70-9517	Drive shaft body ..	
14.	24-36	Sealing washer, drive shaft ..	
15.	70-9431	Locating pin, drive shaft ..	
16.	70-9383	Thrust washer, drive shaft ..	
17.	70-9429	Retaining pin, drive gear ..	
18.	21-1872	Plug timing aperture ..	
19.	70-8896	Washer, for plug line 18 ..	
20.	21-1892	Bolt, crankcase ($\frac{5}{16}"$ U.N.C. $\times 1\frac{1}{2}"$) ..	3
21.	2-923	Washer, crankcase bolt ($\frac{5}{16}" \times \frac{5}{8}" \times \frac{1}{16}"$) ..	3
22.	24-732	Bearing, right-hand (Hoffman 325) ..	
23.	70-9432	Gasket, tachometer drive ..	
24.	70-9384	Cover plate, tachometer drive hole ..	
25.	40-242*	Screw, tachometer drive (2 B.A. $\times 27/64"$ countersunk) ..	2
26.	41-790	Push rod, inlet and exhaust ..	2
27.	70-7739	Tappet, inlet and exhaust ..	2
28.	41-958	Camshaft complete ..	
29.	40-118	Key, camshaft pinion ..	
30.	41-560	Key, crankshaft pinion ..	
31.	42-5864	Nut, crankshaft ($\frac{5}{8}"$ B.S.F.) ..	
32.	40-455	Lockwasher, crankshaft nut ..	
33.	41-569	Pinion, crankshaft ..	
34.	41-567	Oil pump drive, crankshaft ..	
35.	41-565	Thrust washer, oil pump drive ..	
36.	24-724	Bearing, left-hand (Hoffman R.325L) ..	
37.	70-9398	Crankcase with fixed fittings ..	
38.	14-6203	Bolt, rear chain oiler ($\frac{1}{4}"$ U.N.C. $\times 1\frac{1}{4}"$) ..	
39.	40-375	Oil pipe, rear chain oiler ..	
40.	66-7518	Washer, chain oiler bolt (fibre $\frac{1}{4}" \times 17/32" \times .078"$) ..	
41.	68-383	Rear chain oiler ..	
42.	40-241	Gasket, primary case back ..	
43.	40-246	Screw, primary case back (2 B.A. $\times \frac{5}{16}"$) ..	6
44.	40-9190	Clip, generator leads ..	
45.	40-243	Oil seal, primary case back ..	
46.	70-3789	Cover plate, primary case back ..	
47.	21-1894*	Rear stud, stator fixing ($\frac{1}{4}"$ U.N.F. $\times \frac{5}{16}"$ U.N.C. $\times 2-19/32"$) ..	
48.	41-143	Chain tensioner, primary ..	
49.	41-146	Distance piece, chain tensioner ..	
50.	19-8019	Generator rotor (Lucas 54213901) ..	
51.	19-1262	Generator stator (Lucas 47205) ..	
52.	29-2054	Washer, rotor fixing ..	
53.	29-2053	Nut, rotor fixing ..	

*Special material: 5.—EN8. 6.—EN14B. 25.—EN8R. 47.—EN14B.

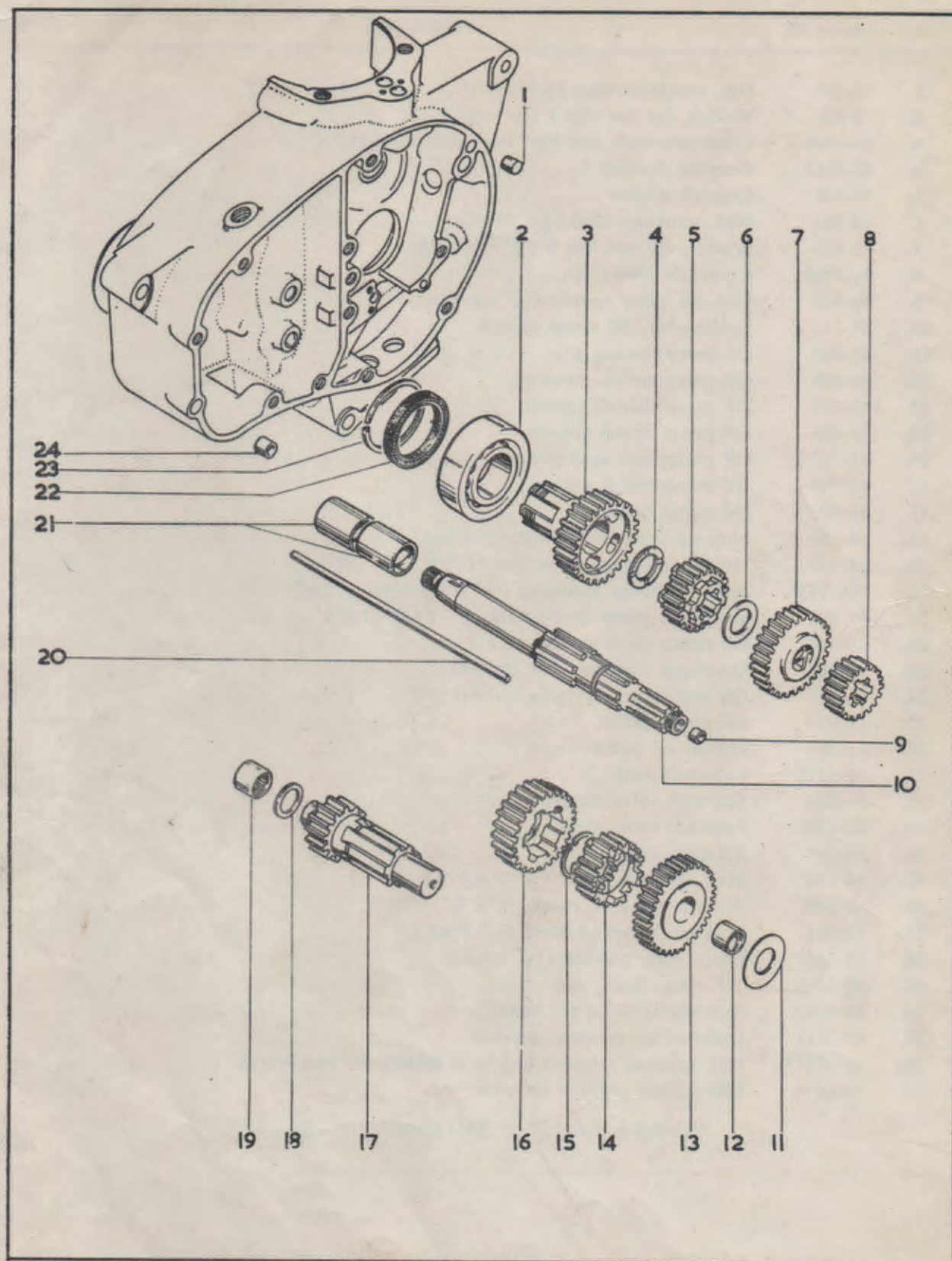
5176 CHAIN TENSION KIT



OIL PUMP, GEARBOX SPROCKET

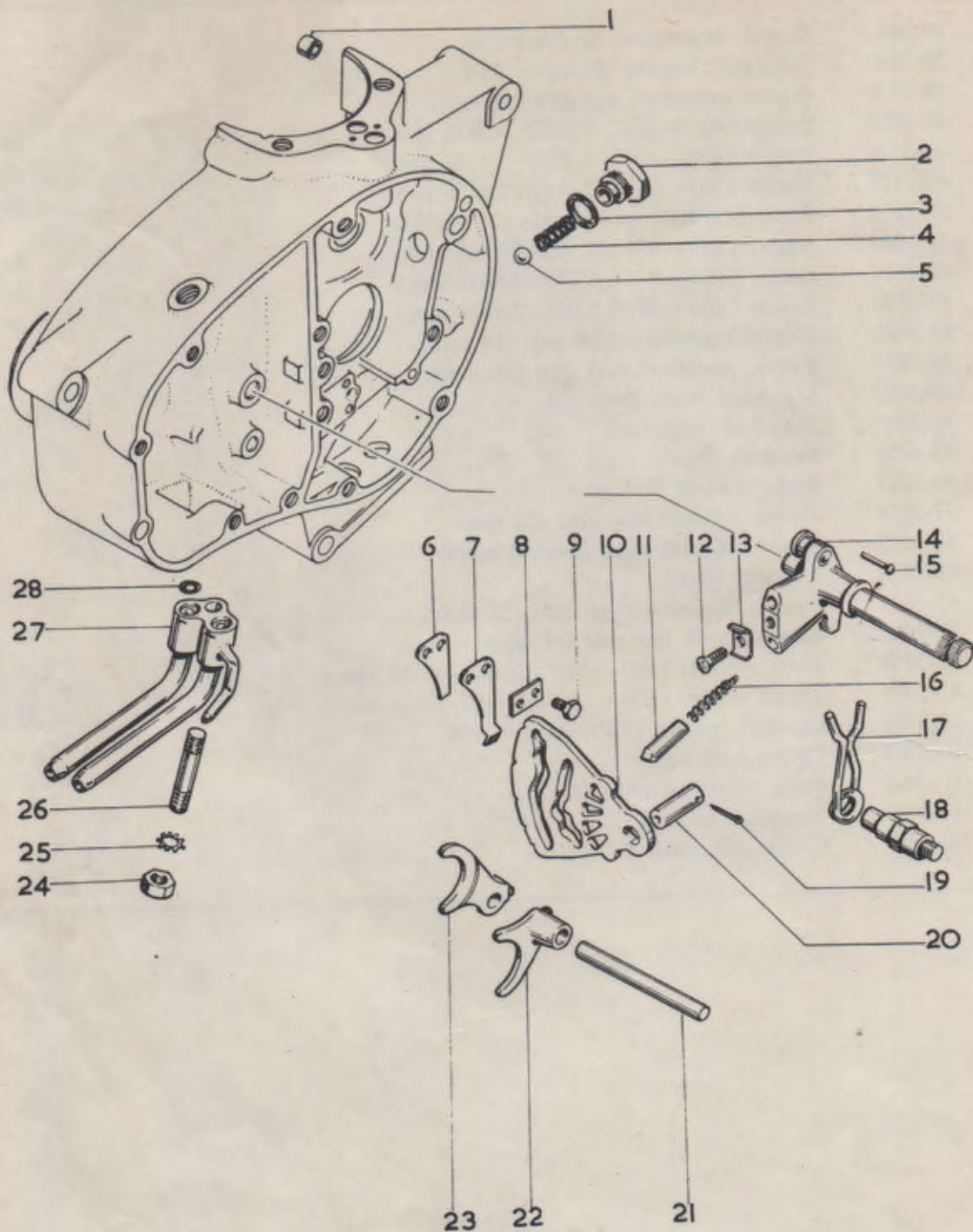
Code	Spares No.	Description	Per Set
1.	14-302	Nut, crankcase stud ($\frac{5}{16}$ " U.N.F.)	2
2.	2-923	Washer, for nut line 1 ($\frac{5}{16}$ " \times $\frac{5}{8}$ " \times $\frac{1}{16}$ ")	2
3.	21-1890	Crankcase stud, rear ($\frac{5}{16}$ " U.N.F./U.N.C. \times 2-11/16")	2
4.	40-1033	Gearbox dipstick	
5.	57-948	Dipstick washer	
6.	14-302	Nut, crankcase stud ($\frac{5}{16}$ " U.N.F.)	2
7.	2-923	Washer, for nut line 6 ($\frac{5}{16}$ " \times $\frac{5}{8}$ " \times $\frac{1}{16}$ ")	2
8.	21-1889	Crankcase stud (top)	2
9.	40-414	Nut, oil pump spindle ($\frac{1}{4}$ " B.S.C.)	
10.	29-541	Lockwasher, oil pump spindle	
11.	41-603	Oil pump driving gear	
12.	41-608	Oil pump spindle housing	
13.	41-712	Oil pump driving spindle	
14.	41-606	Oil pump driven spindle	
15.	41-713	Oil pump feed gear (driven)	
16.	41-714	Oil pump thrust washer	2
17.	41-803	Oil pump body	
18.	14-901	Nut, oil pump mounting ($\frac{1}{4}$ " U.N.F.)	2
19.	68-938	Washer, oil pump mounting ($\frac{17}{64}$ " \times $\frac{5}{8}$ " \times $\frac{1}{16}$ ")	2
20.	21-1893*	Stud, oil pump mounting ($\frac{1}{4}$ " U.N.F./U.N.C. \times 2- $\frac{3}{16}$ ")	2
21.	41-609	Screw, oil pump cover plate ($\frac{3}{16}$ " B.S.C. \times 1- $\frac{5}{16}$ ")	4
22.	67-1391	Oil pump cover plate	
23.	41-605	Oil pump scavenge gear (driven)	
24.	41-604	Oil pump scavenge gear (driver)	
25.	41-804	Oil pump gasket	
26.	41-706	Dowel, oil pump	2
27.	70-8315	Camshaft bush	
28.	41-624	Scavenge valve complete	
29.	67-1288	Scavenge cover gasket	
30.	41-620	Scavenge cover	
31.	14-1401	Stud, scavenge cover ($\frac{1}{4}$ " U.N.F./U.N.C. \times 1")	4
32.	2-525	Washer, scavenge cover ($\frac{1}{4}$ " \times $\frac{1}{2}$ " \times .048")	4
33.	14-901	Locknut, scavenge cover ($\frac{1}{4}$ " U.N.F.)	4
34.	21-1857	Drain plug, gearbox ($\frac{1}{2}$ " U.N.C.)	
35.	68-3168	"O" ring, drain plug	
36.	41-3092	Gearbox sprocket (17 teeth)	
37.	40-3121	Lockwasher, gearbox sprocket	
38.	40-3051*	Nut, gearbox sprocket (1- $\frac{1}{16}$ " \times 20 threads per inch WHIT.)	
39.	90-6074	Felt washer, gearbox sprocket	

*Special material: 20.—EN14B. 38.—EN8.



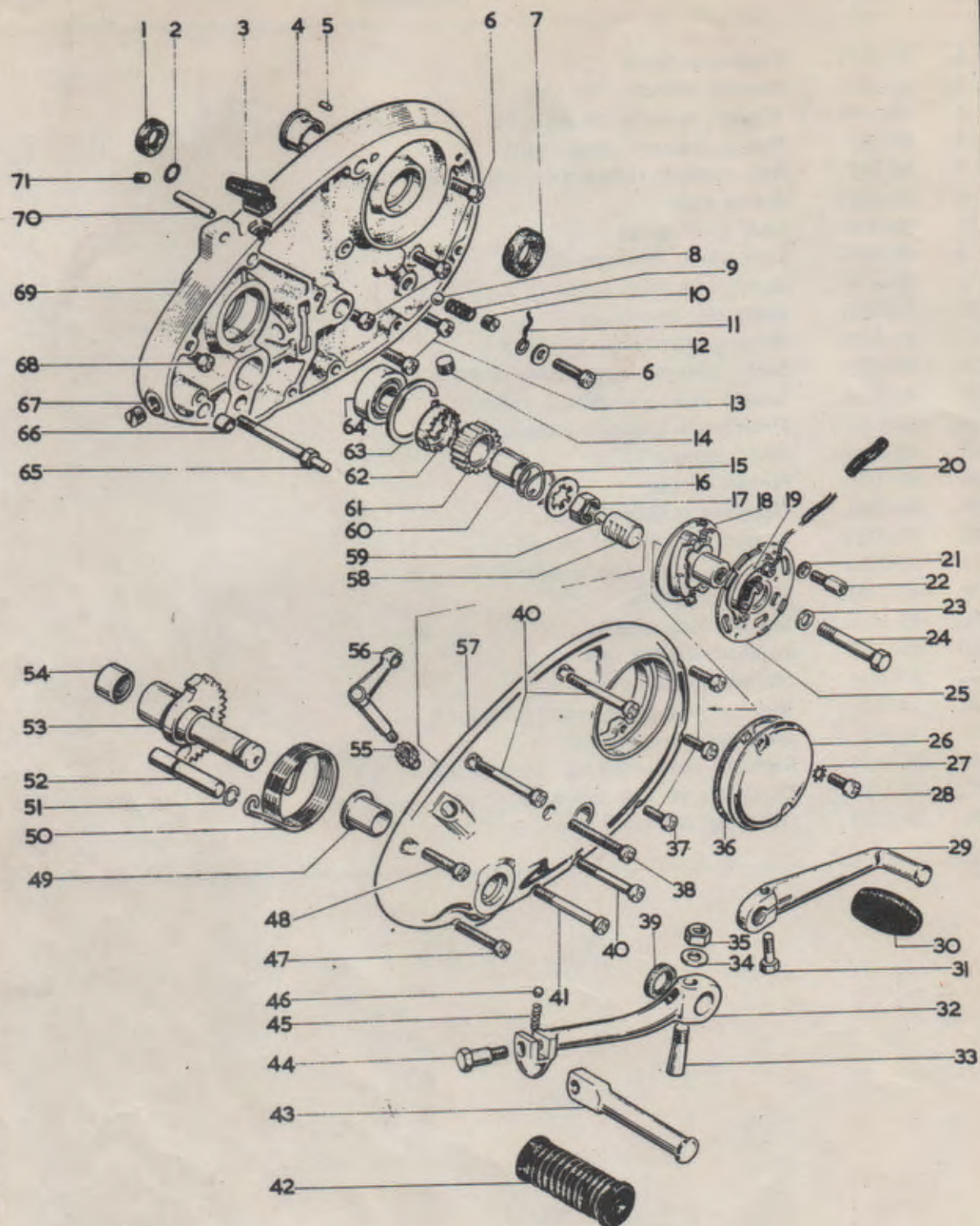
GEAR CLUSTER

Code	Spares No.	Description	Per Set
1.	40-394	Dowel, inner cover to crankcase	2
2.	29-3857	Mainshaft bearing (Hoffman 130)	
3.	57-3872	Pinion, mainshaft top gear (22 teeth)	
4.	40-3020	Spacer (.093—.094"; 2.3622—2.3876 mm.)	as reqd.
4.	40-3126	Spacer (.098—.099"; 2.4892—3.1146 mm.)	as reqd.
4.	40-3127	Spacer (.103—.104"; 2.6162—2.6416 mm.)	as reqd.
5.	57-3876	Pinion, layshaft second gear (21 teeth)	
6.	40-3019	Spacer (.075—.076"; 1.905—1.9304 mm.)	as reqd.
6.	40-3119	Spacer (.070—.071"; 1.778—1.8034 mm.)	as reqd.
6.	40-3120	Spacer (.080—.081"; 2.032—2.0574 mm.)	as reqd.
7.	41-3063	Pinion, mainshaft third gear (24 teeth)	
8.	41-3089	Pinion, mainshaft first gear (16 teeth)	
9.	40-3007	Mainshaft bush, push rod	
10.	40-3254	Mainshaft with bush	
11.	40-3258	Layshaft shim	
12.	40-3262	Bush, layshaft first gear	
13.	57-3874	Pinion, layshaft first gear (27 teeth)	
14.	57-3877	Pinion, layshaft third gear (19 teeth)	
15.	41-3078	Layshaft circlip	
16.	41-3070	Pinion, layshaft second gear (22 teeth)	
17.	41-3068	Layshaft with top gear (14 teeth)	
18.	41-3074	Thrust washer (.083—.085"; 2.1082—2.159 mm.)	as reqd.
18.	41-3072	Thrust washer (.078—.080"; 1.9812—2.032 mm.)	as reqd.
19.	40-3292	Layshaft bearing (Torrington B.108)	
20.	40-3265	Clutch push rod	
21.	41-3045	Bush, mainshaft top gear	
22.	41-3054	Mainshaft oil seal	2
23.	70-6026	Circlip, mainshaft oil seal	



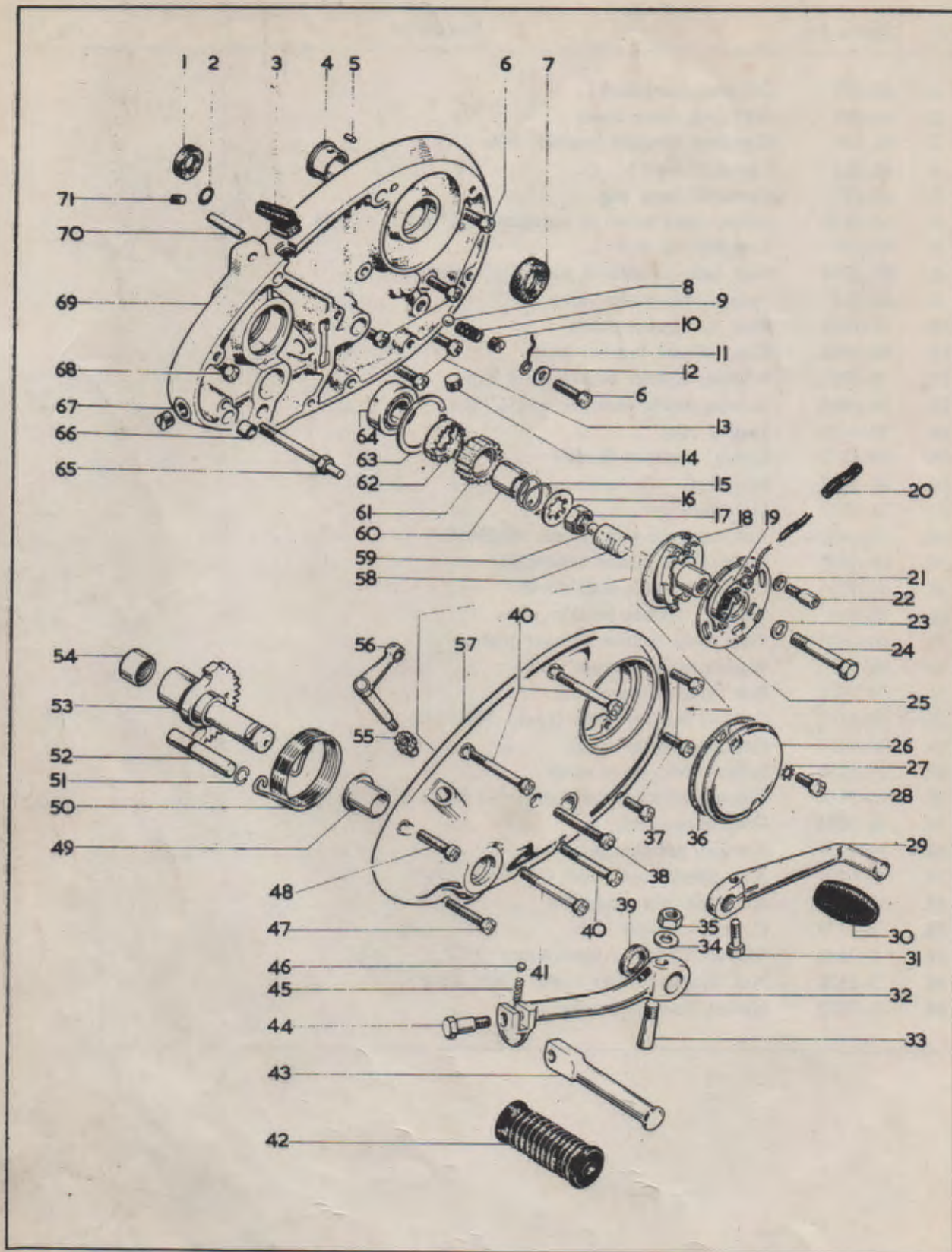
GEARCHANGE MECHANISM

Code	Spares No.	Description	Per Set
1.	67-1236	Crankcase dowel	
2.	21-1972	Pressure release valve plug	
3.	67-1498	Washer, pressure release valve	
4.	40-387	Spring, pressure release valve	
5.	90-241	Ball, pressure release valve ($\frac{5}{16}$ " diameter)	
6.	40-3043	Spring plate	
7.	40-3042	Cam plate spring	
8.	40-3045	Lock plate, for screw line 9	
9.	40-3044	Screw, cam plate spring (2 B.A. $\times \frac{3}{8}$ ")	2
10.	57-3850	Camplate, gearchange	
11.	40-3193	Plunger, gearchange quadrant	2
12.	40-3323	Screw, plunger keeper plate (5 B.A. $\times \frac{5}{16}$ ")	
13.	40-3194	Keeper plate, gearchange quadrant	
14.	40-3321	Gearchange quadrant complete	
15.	40-3059	Rivet, plunger spring	2
16.	40-3155	Plunger spring	2
17.	40-3061	Gearchange return spring	
18.	57-3763	Anchor bolt, return spring	
19.	60-2724	Split pin, cam plate spindle ($3/32$ " \times 1")	
20.	40-3291	Camplate spindle	
21.	40-3032	Selector fork spindle	
22.	40-3033	Layshaft selector fork	
23.	57-3854	Mainshaft selector fork	
24.	14-302	Nut, oil pipe union stud ($\frac{5}{16}$ " U.N.F.)	
25.	36-382	Lockwasher, union stud	
26.	21-1891	Stud, oil pipe union ($\frac{5}{16}$ " U.N.F./U.N.C. \times 1 $\frac{7}{8}$ ")	
27.	40-1035	Crankcase oil pipe union	
28.	70-8259	"O" ring, oil union pipe	2



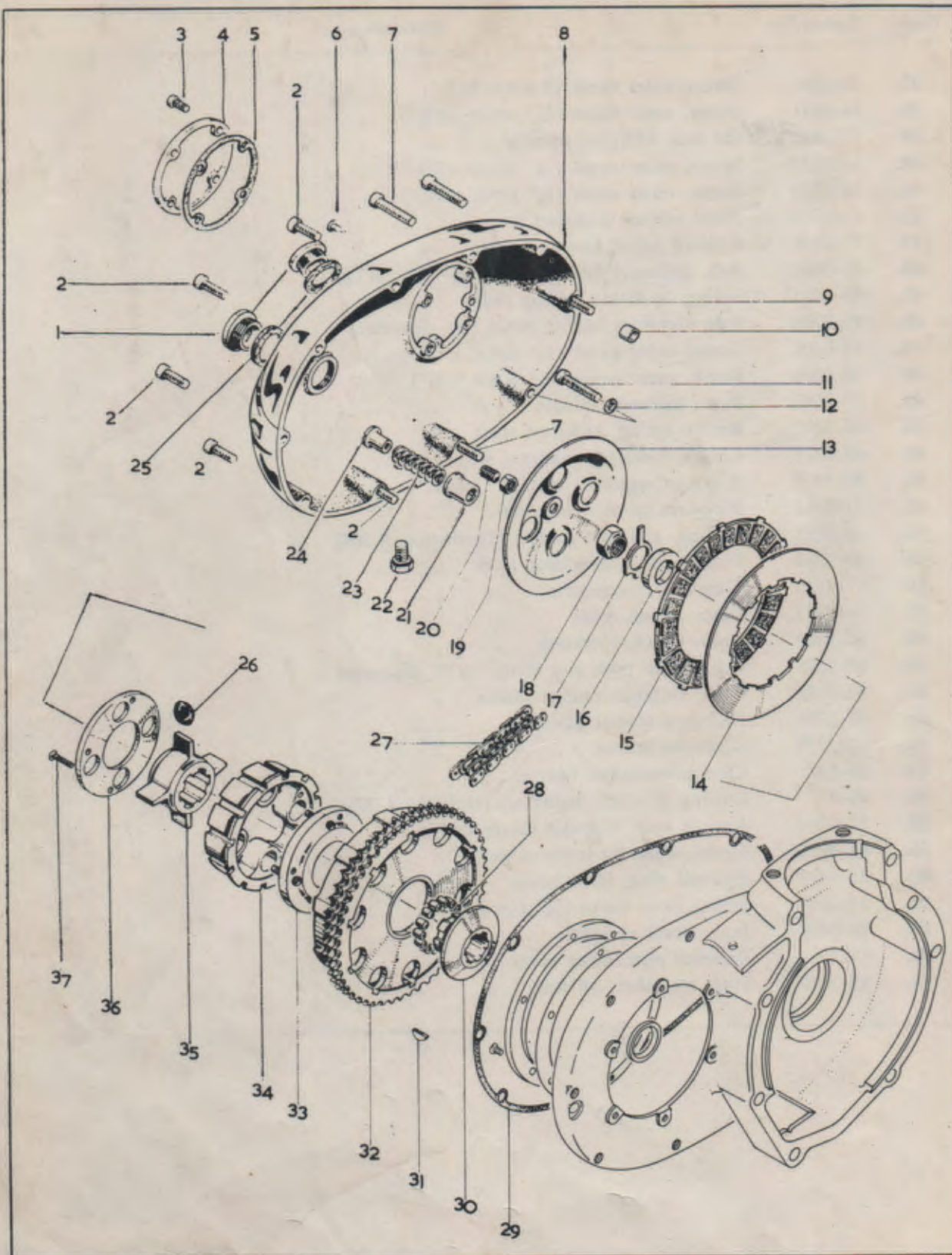
FOOTSTART AND FOOTCHANGE

Code	Spares No.	Description	Per Set
1.	40-977	Oil seal, crankshaft	
2.	68-289	"O" ring, inner cover	
3.	41-715	Grommet, contact breaker cable	
4.	40-222	Camshaft bush	
5.	40-28	Camshaft bush peg	
6.	14-6610	Screw, inner cover to crankcase ($\frac{1}{4}$ " U.N.C. \times $1\frac{1}{2}$ ")	4
7.	40-679	Camshaft oil seal	
8.	97-2704	Steel ball, non-return valve ($\frac{1}{4}$ " diameter)	
9.	40-385	Spring, non-return valve	
10.	21-1898	Plug, non-return valve	
11.	90-5268	Clip, contact breaker leads	
12.	2-525	Washer, contact breaker lead clip	
13.	14-6606	Bottom screw, inner cover ($\frac{1}{4}$ " U.N.C. \times $\frac{3}{4}$ ")	2
14.	70-9526	Sealing plug	
15.	40-3273	Spring, kickstart ratchet	
16.	40-3257	Mainshaft lockwasher	
17.	76-271	Mainshaft nut	
18.	19-1853	Auto-advance unit (Lucas 54419653)	
19.	19-1849	Contact Set (Lucas 54419827)	
20.	40-723	Contact breaker lead sleeve	
21.	40-682	Washer, contact breaker plate	2
22.	40-683	Pillar bolt, contact breaker plate	2
23.	68-331	Washer, auto-advance unit	
24.	70-7831	Bolt, auto-advance unit	
25.	19-1852	Contact breaker plate (Lucas 54419645)	
26.	70-8737	Contact breaker cover	
27.	29-3319	Lockwasher, cover screw	2
28.	70-7354	Screw, contact breaker cover (2 B.A. \times $\frac{1}{2}$ ")	2
29.	40-3073	Gearchange lever	
30.	89-3208	Rubber, gearchange pedal	
31.	42-6554	Bolt, gearchange pedal ($\frac{1}{4}$ " B.S.C. \times $\frac{3}{4}$ ")	
32.	57-2764	Kickstart lever complete	
33.	2-2579	Cotter, kickstart lever	
34.	2-2580	Washer, kickstart lever cotter ($\frac{9}{32}$ " \times $\frac{1}{2}$ " \times $\frac{1}{16}$ ")	
35.	2-2578	Nut, kickstart lever cotter (.266" B.S.C.)	
36.	70-7882	Gasket, contact breaker cover	



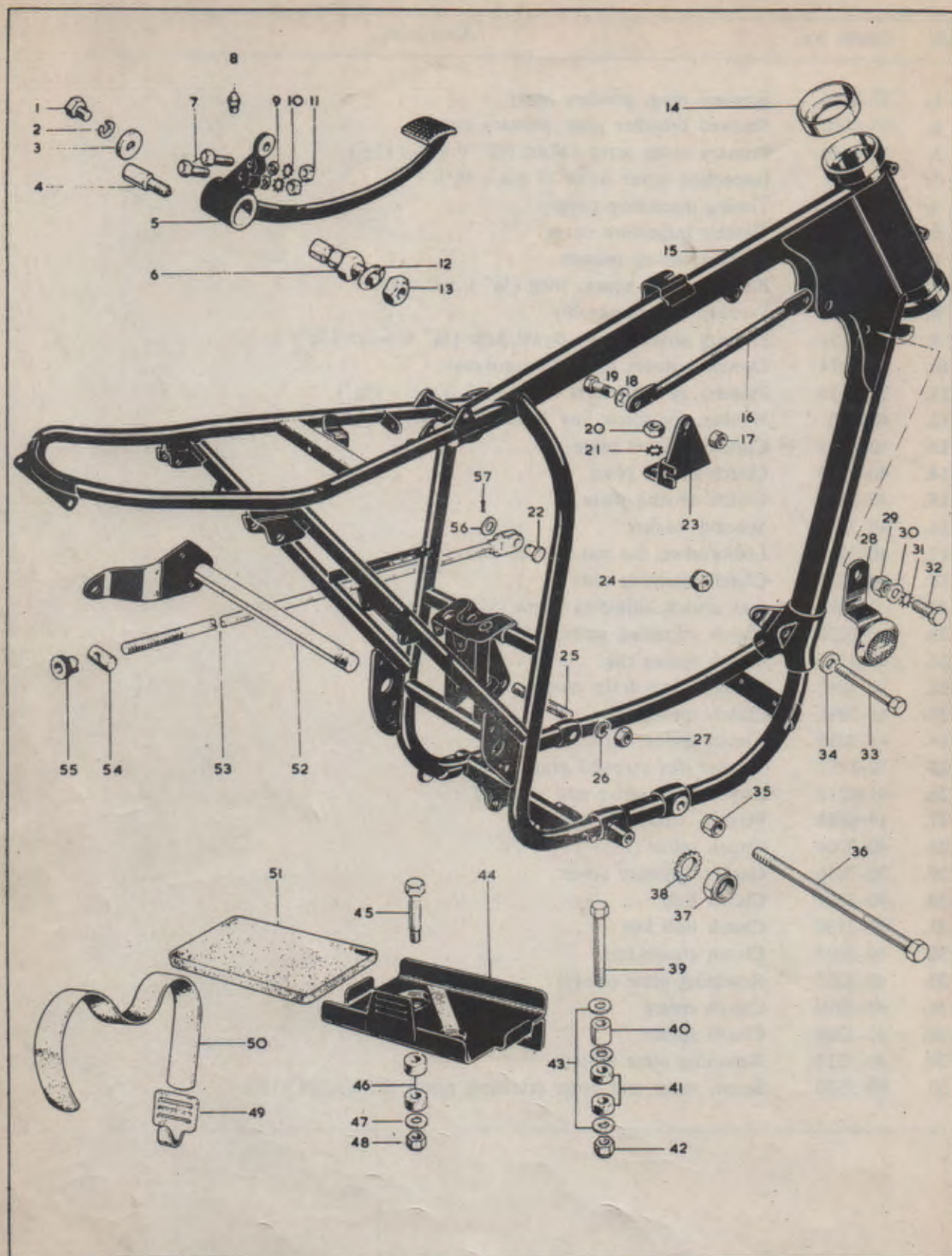
FOOTSTART AND FOOTCHANGE

Code	Spares No.	Description	Per Set
37.	40-236	Screw, outer cover (2 B.A. $\times \frac{5}{8}$ ")	3
38.	14-6611	Screw, outer cover ($\frac{1}{4}$ " U.N.C. $\times 1\frac{3}{4}$ ")	
39.	57-2461 2641	Oil seal, kickstart spindle	
40.	14-6612	Screw, outer cover ($\frac{1}{4}$ " U.N.C. $\times 2$ ")	3
41.	14-6614	Screw, outer cover ($\frac{1}{4}$ " U.N.C. $\times 2\frac{1}{2}$ ")	
42.	57-2759	Pedal rubber, kickstart lever	
43.	57-2646	Folding pedal, kickstart lever	
44.	40-3084	Bolt, kickstart folding pedal ($\frac{5}{16}$ " B.S.C. $\times 1\frac{3}{16}$ ")	
45.	40-3085	Spring, kickstart folding pedal	
46.	97-2704	Ball, kickstart folding pedal ($\frac{1}{4}$ " diameter)	
47.	14-6609	Screw, outer cover ($\frac{1}{4}$ " U.N.C. $\times 1\frac{1}{4}$ ")	
48.	14-6606	Screw, outer cover ($\frac{1}{4}$ " U.N.C. $\times \frac{3}{4}$ ")	
49.	57-2642	Bush, kickstart spindle	
50.	40-3275	Return spring, kickstart lever	
51.	40-3277	Circlip, kickstart quadrant stop	
52.	40-3276	Kickstart quadrant stop	
53.	57-2643	Kickstart spindle complete	
54.	40-3292	Bearing, kickstart spindle (Torrington B.108)	
55.	40-3283	Pinion, clutch operating lever	
56.	57-2750	Clutch lever complete	
57.	70-9433	Outer timing cover	
58.	40-3282	Rack, clutch operating	
59.	65-2593	Ball, clutch push rod thrust ($\frac{7}{32}$ " diameter)	
60.	40-3272	Bush, kickstart ratchet pinion	
61.	40-3271	Kickstart ratchet pinion	
62.	40-3279	Kickstart ratchet	
63.	76-528	Circlip, mainshaft bearing	
64.	90-11	Bearing, gearbox mainshaft (Hoffman L.27)	
65.	57-3764	Anchor bolt, kickstart return spring	
66.	66-3074	Dowel, outer to inner cover	
67.	21-1899	Screw plug, inner cover	2
68.	14-6608	Screw, inner cover ($\frac{1}{4}$ " U.N.C. $\times 1$ ")	
69.	70-9408	Inner cover complete	
70.	75-257	Breather pipe, inner cover	
71.	53-3049	Plug, mainshaft oil feed	



CLUTCH AND PRIMARY COVER

Code	Spares No.	Description	Per Set
1.	57-2166	Screwed plug, primary cover	
1.	70-9800	Screwed breather plug, primary cover	
2.	14-6610	Primary cover screw, short ($\frac{1}{4}$ " U.N.C. \times $1\frac{1}{2}$ ")	5
3.	76-4116	Inspection cover screw (2 B.A. \times $\frac{1}{2}$ ")	4
4.	68-839	Timing inspection cover	
5.	68-840	Gasket, inspection cover	
6.	40-1005	Ignition timing pointer	
7.	14-6611	Primary cover screw, long ($\frac{1}{4}$ " U.N.C. \times $1\frac{3}{4}$ ")	3
8.	70-9427	Primary cover assembly	
9.	21-1951	Primary cover screw, dowel hole ($\frac{1}{4}$ " U.N.C. \times $1\frac{7}{8}$ ")	
10.	66-3074	Dowel, primary cover to crankcase	2
11.	21-1855	Primary case oil level screw ($\frac{1}{4}$ " U.N.C. \times $1\frac{3}{4}$ ")	
12.	40-740	Washer, for screw line 10 (alloy $17/64$ " \times $\frac{3}{8}$ " \times $\frac{1}{16}$ ")	
13.	40-3222	Clutch pressure plate	
14.	40-3220	Clutch driven plate	5
15.	40-3233	Clutch driving plate	4
16.	40-3234	Spacing washer	
17.	40-3221	Lockwasher, for nut line 18	
18.	40-3227	Clutch retaining nut	
19.	2-2395	Nut, clutch adjusting screw ($\frac{1}{4}$ " B.S.C.)	
20.	40-3230	Clutch adjusting screw ($\frac{1}{4}$ " B.S.C. \times $\frac{5}{8}$ ")	
21.	40-3218	Clutch spring clip	4
22.	21-1943	Primary case drain plug	
23.	41-3091	Clutch spring	4
24.	41-3215	Clutch spring nut	4
25.	70-8782	Washer, for screwed plugs lines 1/1	2
26.	41-3212	Rubber pad, drive and rebound	8
27.	19-8683	Primary chain (72 pitch)	
28.	40-3206	Clutch roller	25
29.	70-7856	Gasket, primary cover	
30.	40-3201	Clutch hub	
31.	40-3150	Clutch hub key	
32.	40-3203	Clutch chainwheel	
33.	40-3207	Retaining plate (inner)	
34.	41-3210	Clutch centre	
35.	41-3209	Clutch spider	
36.	40-3210	Retaining plate (outer)	
37.	40-3330	Screw, inner and outer retaining plates (1" B.A. \times $15/16$ ")	

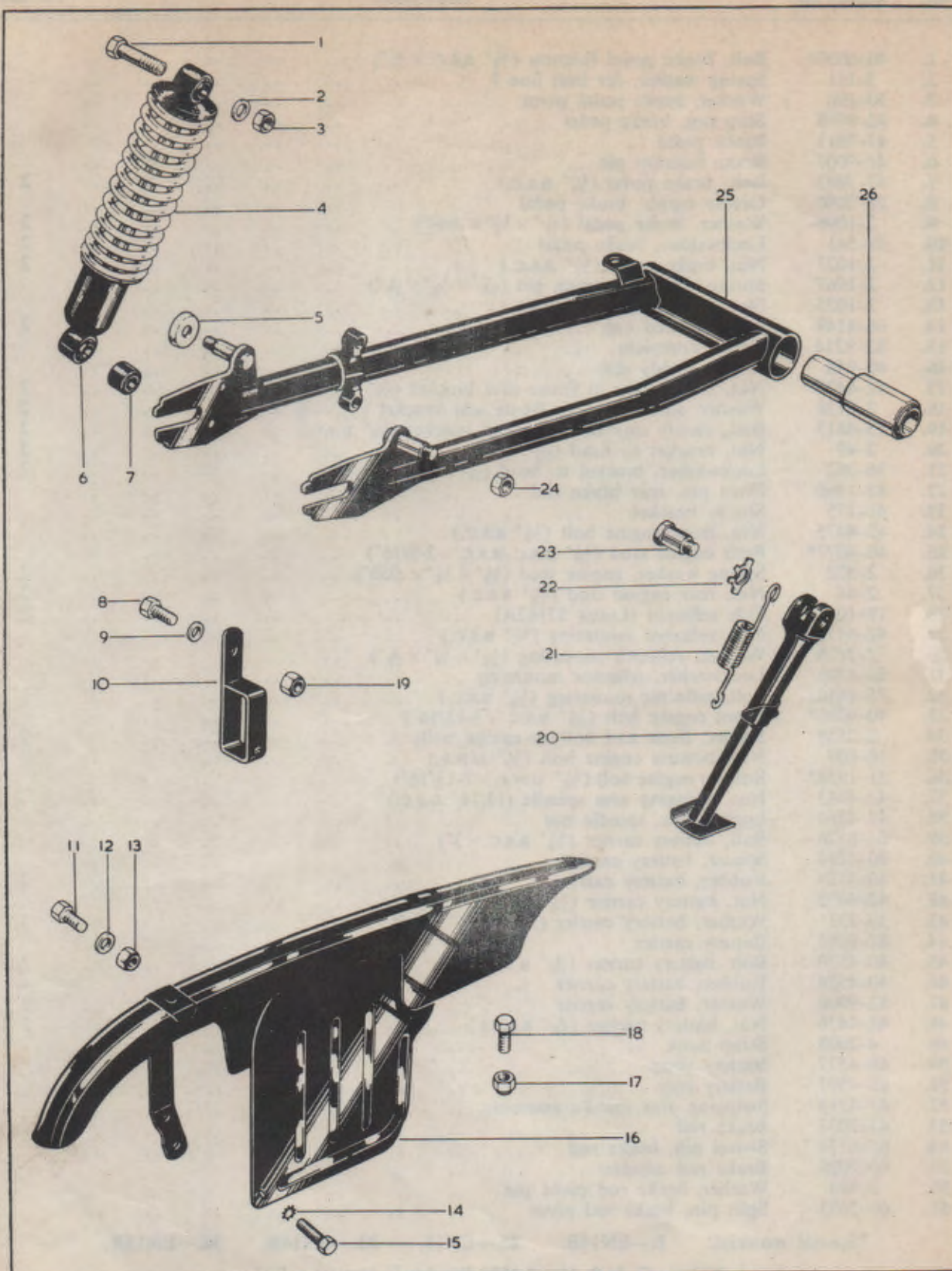


FRAME, BATTERY CARRIER, REAR BRAKE CONTROL

Code	Spares No.	Description	Per Set
1.	40-6030*	Bolt, brake pedal fulcrum ($\frac{3}{8}$ " B.S.C. \times $\frac{3}{4}$ ")
2.	3-111	Spring washer, for bolt line 1
3.	30-196	Washer, brake pedal pivot
4.	82-9958	Stop peg, brake pedal
5.	47-7013	Brake pedal
6.	41-7007	Brake fulcrum pin
7.	47-7003	Bolt, brake pedal ($\frac{1}{4}$ " B.S.C.) 2
8.	28-2080	Grease nipple, brake pedal
9.	2-1096	Washer, brake pedal ($\frac{3}{16}$ " \times $\frac{3}{8}$ " \times .044") 2
10.	29-541	Lockwasher, brake pedal 2
11.	2-1027	Nut, brake pedal ($\frac{1}{4}$ " B.S.C.) 2
12.	2-1967	Spring washer, fulcrum pin ($\frac{7}{16}$ " \times $\frac{7}{8}$ " \times $\frac{1}{16}$ ")
13.	2-1925	Nut, fulcrum pin ($\frac{7}{16}$ " B.S.C.)
14.	66-4149	Steering head cup 2
15.	82-9214	Frame complete
16.	40-948	Engine steady stay
17.	42-4475	Nut, steady stay to frame and bracket ($\frac{3}{8}$ " B.S.C.) 2
18.	2-2138	Washer, steady stay to frame and bracket ($\frac{3}{8}$ " \times $\frac{3}{4}$ " \times $\frac{1}{16}$ ") 2
19.	75-4813	Bolt, steady stay to frame and bracket ($\frac{3}{8}$ " B.S.C.) 2
20.	2-49	Nut, bracket to head ($\frac{5}{16}$ " B.S.C.) 2
21.	36-382	Lockwasher, bracket to head ($\frac{5}{16}$ ") 2
22.	83-1460	Pivot pin, rear brake rod
23.	41-175	Steady bracket
24.	42-4475	Nut, front engine bolt ($\frac{3}{8}$ " B.S.C.)
25.	40-4077*	Rear engine stud ($\frac{3}{8}$ " B.S.C./B.S.C. \times 2-9/16")
26.	2-522	Spring washer, engine stud ($\frac{3}{8}$ " \times $\frac{3}{4}$ " \times .056") 2
27.	2-46	Nut, rear engine stud ($\frac{3}{8}$ " B.S.C.) 2
28.	19-1035	Side reflector (Lucas 57162A) 2
29.	42-4475	Nut, reflector mounting ($\frac{3}{8}$ " B.S.C.)
30.	2-2138	Washer, reflector mounting ($\frac{3}{8}$ " \times $\frac{3}{4}$ " \times $\frac{1}{16}$ ")
31.	66-4705	Lockwasher, reflector mounting
32.	75-4813	Bolt, reflector mounting ($\frac{3}{8}$ " B.S.C.)
33.	40-4081*	Front engine bolt ($\frac{3}{8}$ " B.S.C. \times 3-13/16")
34.	2-2138	Spacer, front and bottom engine bolts 2
35.	14-803	Nut, bottom engine bolt ($\frac{3}{8}$ " U.N.F.)
36.	21-1934*	Bottom engine bolt ($\frac{3}{8}$ " U.N.F. \times 7-15/16")
37.	42-4343	Nut, swinging arm spindle (13/16" B.S.C.)
38.	42-4364	Lockwasher, spindle nut
39.	65-8326	Bolt, battery carrier ($\frac{3}{8}$ " B.S.C. \times 3")
40.	90-4294	Spacer, battery carrier
41.	40-4524	Rubber, battery carrier 2
42.	42-4475	Nut, battery carrier ($\frac{3}{8}$ " B.S.C.)
43.	30-733	Washer, battery carrier (.390" \times $\frac{7}{8}$ " \times $\frac{1}{16}$ ") 3
44.	82-8285	Battery carrier
45.	40-4530	Bolt, battery carrier ($\frac{5}{16}$ " B.S.C.) 2
46.	40-4524	Rubber, battery carrier 4
47.	82-9008	Washer, battery carrier 2
48.	42-4476	Nut, battery carrier ($\frac{5}{16}$ " B.S.C.) 2
49.	4-2608	Strap hook
50.	68-4577	Battery strap
51.	68-4597	Battery tray
52.	47-4214	Swinging arm spindle assembly
53.	41-7037	Brake rod
54.	65-6274	Swivel pin, brake rod
55.	90-7029	Brake rod adjuster
56.	2-525	Washer, brake rod pivot pin
57.	60-2683	Split pin, brake rod pivot

*Special material: 1.—EN14B. 25.—EN15. 33.—EN14B. 36.—EN15R.

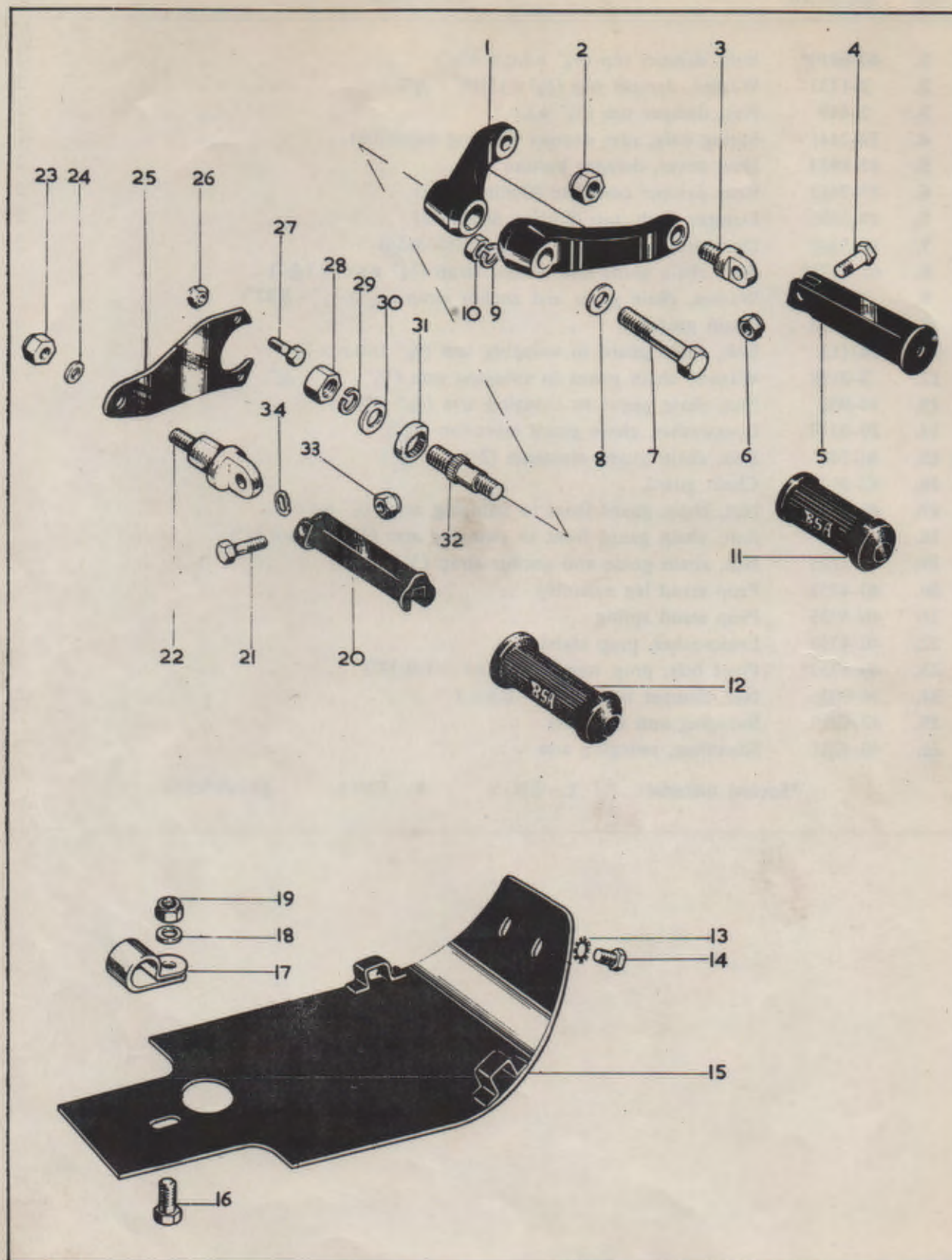
Note:—Code 9. No. 2-1096 Washer is now cancelled.



SWINGING ARM

Code	Spares No.	Description	Per Set
1.	40-6910*	Bolt, damper top ($\frac{3}{8}$ " B.S.C. \times $1\frac{7}{8}$ ")	2
2.	2-1733	Washer, damper top ($\frac{3}{8}$ " \times $13/16$ " \times $\frac{1}{16}$ ")	2
3.	2-449	Nut, damper top ($\frac{3}{8}$ " B.S.C.)	2
4.	19-7441	Spring only, rear damper (Girling 64543708)	2
5.	82-8933	Dust cover, damper bottom	2
6.	19-7452	Rear damper complete (Girling 4644)	2
7.	19-5305	Damper bush, top (Girling 64533645)	2
7.	19-5307	Damper bush, bottom (Girling 64533654)	2
8.	67-1171*	Bolt, chain guide and anchor strap ($\frac{3}{8}$ " B.S.C. \times $1\frac{5}{16}$ ")	
9.	2-861	Washer, chain guide and anchor strap ($\frac{3}{8}$ " \times $\frac{3}{4}$ " \times $3/32$ ")	
10.	82-9953	Chain guide	
11.	14-113	Bolt, chain guard to swinging arm ($\frac{5}{16}$ " U.N.F. \times $\frac{5}{8}$ ")	
12.	2-2138	Washer, chain guard to swinging arm ($\frac{3}{8}$ " \times $\frac{3}{4}$ " \times $\frac{1}{16}$ ")	
13.	14-902	Nut, chain guard to swinging arm ($\frac{5}{16}$ " U.N.F.)	
14.	29-3319	Lockwasher, chain guard extension ($\frac{3}{16}$ ")	
15.	40-246	Bolt, chain guard extension (2 B.A. \times $\frac{5}{16}$ ")	
16.	82-9952	Chain guard	
17.	40-414	Nut, chain guard front to swinging arm ($\frac{1}{4}$ " B.S.C.)	
18.	2-220	Bolt, chain guard front to swinging arm ($\frac{1}{4}$ " B.S.C. \times $\frac{3}{8}$ ")	
19.	41-4105	Nut, chain guide and anchor strap ($\frac{3}{8}$ " B.S.C.)	
20.	40-4752	Prop stand leg assembly	
21.	40-4735	Prop stand spring	
22.	40-4734	Lockwasher, prop stand bolt	
23.	40-4733*	Pivot bolt, prop stand ($\frac{3}{8}$ " B.S.C. \times $1-9/32$ ")	
24.	14-903	Nut, damper bottom ($\frac{3}{8}$ " U.N.F.)	2
25.	82-9210	Swinging arm complete	
26.	40-4241	Silentbloc, swinging arm	2

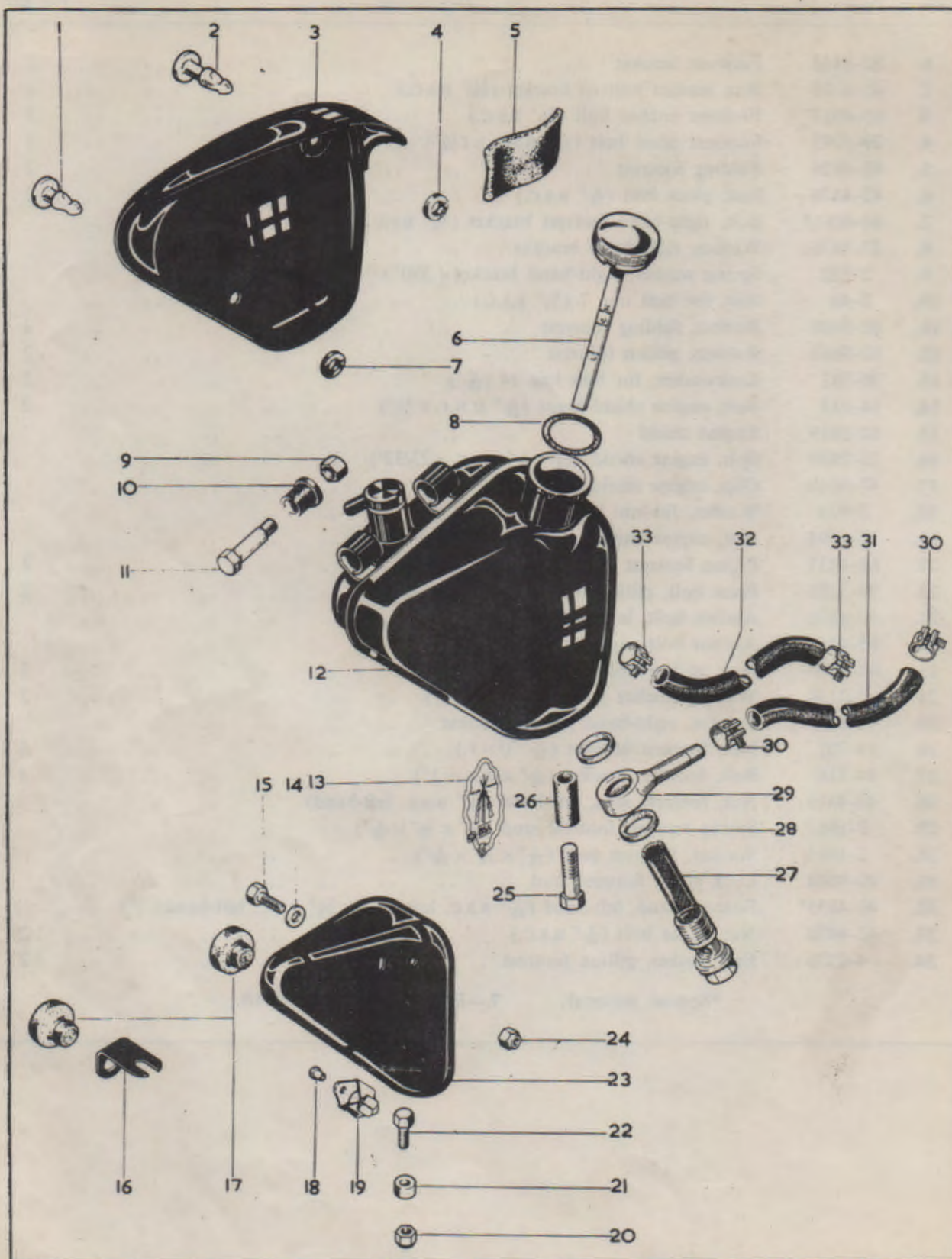
*Special material: 1.—EN15. 8.—EN15. 23.—EN32B.



FOOTRESTS, ENGINE SHIELD

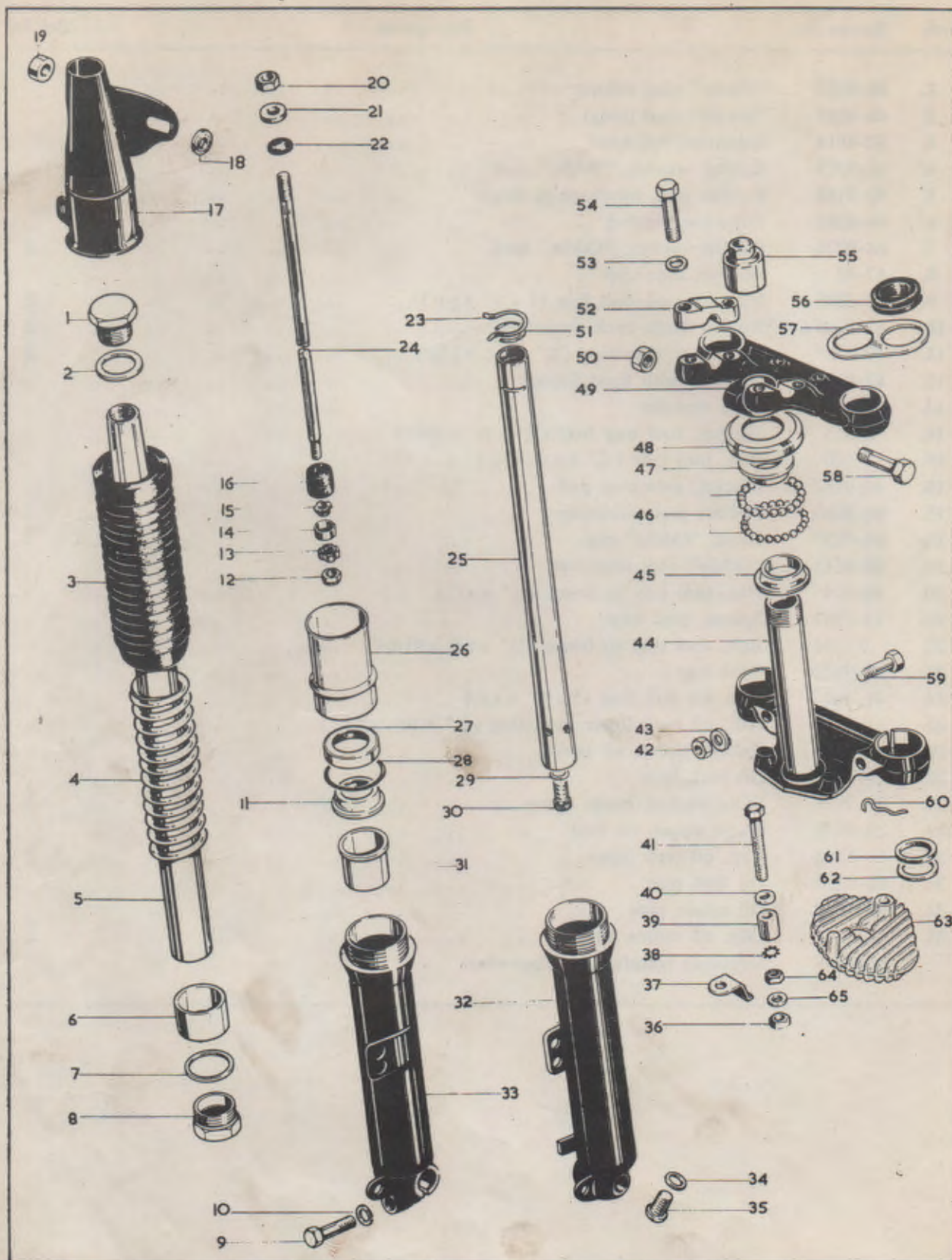
Code	Spares No.	Description	Per Set
1.	82-8448	Footrest bracket	2
2.	41-4105	Nut, anchor bolt to bracket ($\frac{3}{8}$ " B.S.C.)	2
3.	65-4917	Footrest anchor bolt ($\frac{3}{8}$ " B.S.C.)	2
4.	29-5293	Footrest pivot bolt ($\frac{5}{16}$ " B.S.C. \times $1\frac{1}{4}$ ")	2
5.	42-4926	Folding footrest	2
6.	42-4476	Nut, pivot bolt ($\frac{5}{16}$ " B.S.C.)	2
7.	68-4081*	Bolt, right-hand footrest bracket ($\frac{3}{8}$ " B.S.C. \times 2-15/16")	
8.	27-5676	Washer, right-hand bracket	
9.	2-522	Spring washer, right-hand bracket (.390" \times $\frac{3}{4}$ " \times .056")	
10.	2-46	Nut, for bolt line 7 ($\frac{3}{8}$ " B.S.C.)	
11.	82-9608	Rubber, folding footrest	2
12.	82-9603	Rubber, pillion footrest	2
13.	36-382	Lockwasher, for bolt line 14 ($\frac{5}{16}$ ")	2
14.	14-113	Bolt, engine shield front ($\frac{5}{16}$ " U.N.F. \times $\frac{5}{8}$ ")	2
15.	82-8819	Engine shield	
16.	28-2338	Bolt, engine shield clip ($\frac{5}{16}$ " B.S.C. \times 23/32")	
17.	47-9010	Clip, engine shield rear	
18.	2-923	Washer, for nut line 19 ($\frac{5}{16}$ " \times $\frac{5}{8}$ " \times $\frac{1}{16}$ ")	
19.	75-6594	Nut, engine shield clip bolt ($\frac{5}{16}$ " B.S.C.)	
20.	68-4835	Pillion footrest	2
21.	29-5293	Pivot bolt, pillion footrest ($\frac{5}{16}$ " B.S.C. \times $1\frac{1}{4}$ ")	2
22.	40-4820	Anchor bolt, left-hand ($\frac{3}{8}$ " B.S.C.)	
22.	65-4917	Anchor bolt, right-hand ($\frac{3}{8}$ " B.S.C.)	
23.	41-4105	Nut, anchor bolt ($\frac{3}{8}$ " B.S.C.)	2
24.	2-2138	Washer, anchor bolt ($\frac{3}{8}$ " \times $\frac{3}{4}$ " \times $\frac{1}{16}$ ")	2
25.	41-4835	Bracket, right-hand pillion footrest	
26.	14-702	Nut, footrest bracket ($\frac{5}{16}$ " U.N.F.)	4
27.	14-116	Bolt, footrest bracket ($\frac{7}{16}$ " U.N.F. \times 1")	3
28.	40-4810	Nut, footrest stud, left-hand ($\frac{7}{16}$ " B.S.C. left-hand)	
29.	2-1967	Spring washer, footrest stud ($\frac{7}{16}$ " \times $\frac{7}{8}$ " \times $\frac{1}{16}$ ")	
30.	2-1945	Washer, footrest stud ($\frac{7}{16}$ " \times $\frac{7}{8}$ " \times $\frac{1}{16}$ ")	
31.	40-4818	Lock plate, footrest stud	
32.	40-4855*	Footrest stud, left-hand ($\frac{7}{16}$ " B.S.C. left-hand \times $\frac{3}{8}$ " B.S.C. left-hand \times 2")	
33.	42-4476	Nut, pivot bolt ($\frac{5}{16}$ " B.S.C.)	2
34.	4-2276	End washer, pillion footrest	2

*Special material: 7.—EN15. 32.—EN14B.



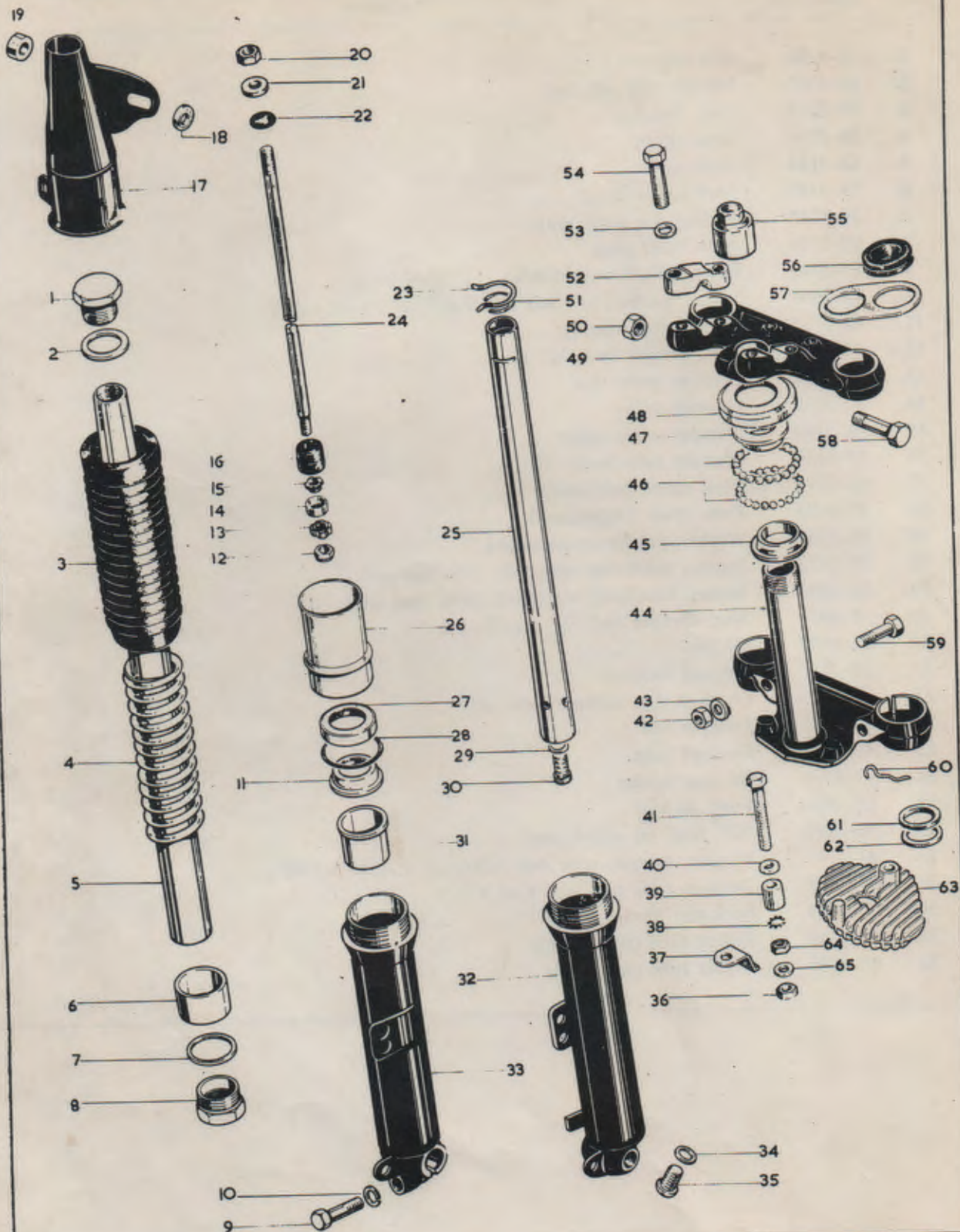
OIL TANK, SIDECOVER, TOOL TRAY

Code	Spares No.	Description	Per Set
1.	68-9223	"Oddie" stud (short)	
2.	68-9287	"Oddie" stud (long)	
3.	82-8614	Sidecover, left-hand	
4.	68-9227	Rubber washer, "Oddie" stud	
5.	40-9188	Rubber pad, sidecover to frame	
6.	68-8368	Filler cap/dipstick	
7.	68-9226	Rubber washer, "Oddie" stud	3
8.	67-42	Washer, filler cap	
9.	42-3249	Nut, oil tank bolt line 11 ($\frac{1}{4}$ " B.S.C.)	2
10.	82-8436 6039	Rubber bush, tank mounting	2
11.	40-8435	Bolt, tank mounting ($\frac{1}{4}$ " B.S.C. \times $1\frac{3}{4}$ ")	2
12.	82-8625	Oil tank with fixed fittings	
13.	65-9270	Tank transfer	
14.	2-525	Washer, tool tray bolt ($\frac{1}{4}$ " \times $\frac{1}{2}$ " \times .048")	
15.	2-220	Bolt, tool tray ($\frac{1}{4}$ " B.S.C. \times $\frac{3}{8}$ ")	
16.	40-9187	Bracket, sidecover pad	
17.	40-8046	Rubber pad, sidecover	2
18.	68-9337	Rivet, "Oddie" clip	2
19.	68-9115	"Oddie" clip, sidecover	
20.	40-414	Nut, tool tray to frame ($\frac{1}{4}$ " B.S.C.)	
21.	15-7563	Spacer, tool tray	
22.	2-1354	Bolt, tool tray to frame ($\frac{1}{4}$ " B.S.C. \times $41/64$ ")	
23.	40-9172	Tool tray	
24.	40-414	Nut, for bolt line 15 ($\frac{1}{4}$ " B.S.C.)	
25.	21-771	Bolt, oil tank lower mounting ($\frac{5}{16}$ " U.N.F. \times $1\frac{3}{4}$ ")	
26.	40-8401	Rubber sleeve, oil tank	
27.	29-7962	Oil tank filter	
28.	29-7971	Fibre washer, banjo union	2
29.	82-8874	Banjo union, oil feed	
30.	68-8382	Clip, oil feed pipe	2
31.	68-8383	Oil feed pipe	
32.	40-8382	Oil return pipe	
33.	68-8343	Clip, oil return pipe	2
	60-2041	Sidecover transfer (not illustrated)	



FRONT FORKS

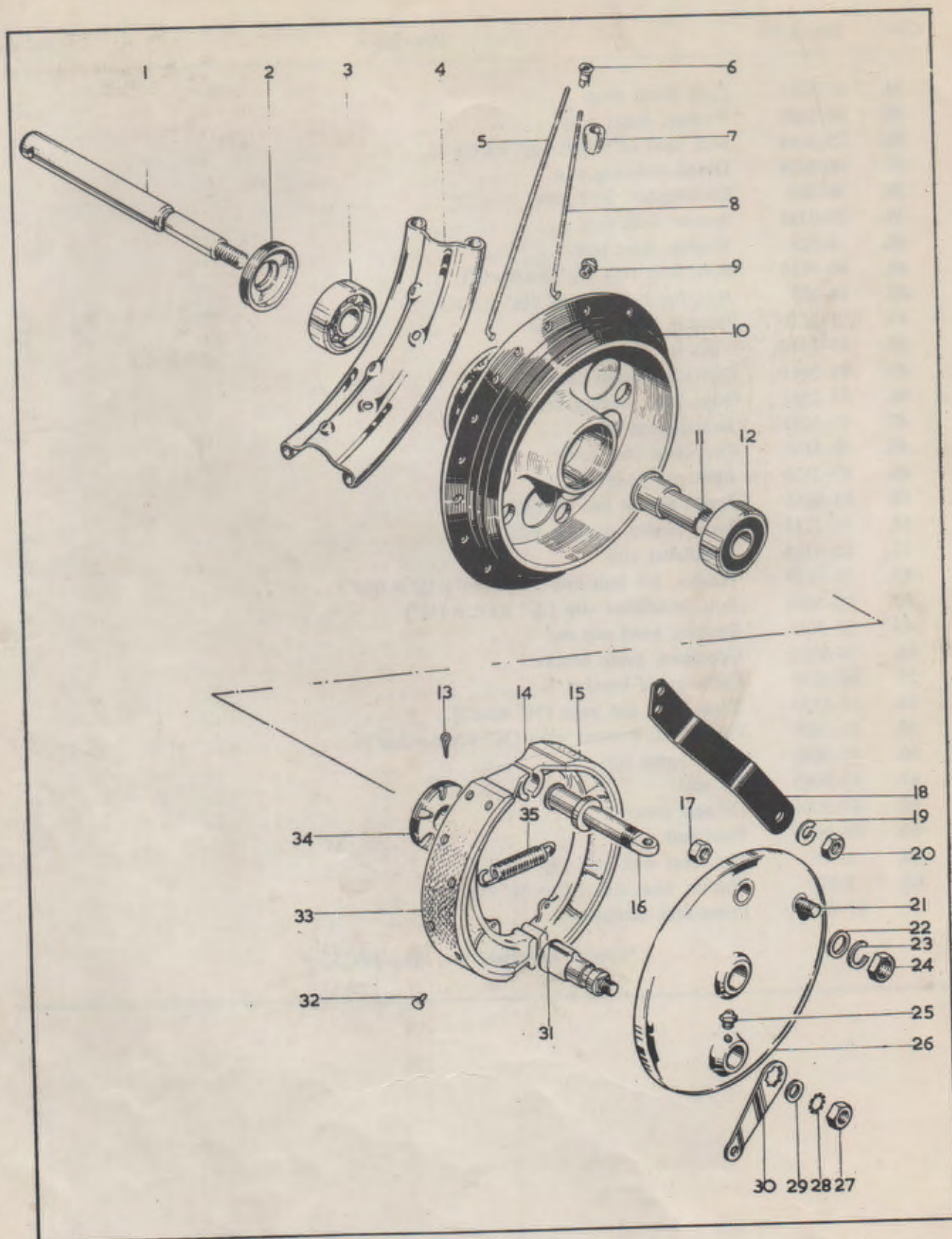
Code	Spares No.	Description	Per Set
1.	41-5146	Top cap nut	2
2.	65-5332	Washer, top cap nut	2
3.	97-2513	Fork bellows	2
4.	89-5036	Fork spring	2
5.	68-5144	Fork shaft	2
6.	29-5347	Fork lower bush	2
7.	29-5338	Washer for shaft plug	2
8.	97-2709	Fork shaft plug	2
9.	65-5295	Pinch bolt, lower member ($\frac{3}{8}$ " B.S.C. \times $1\frac{3}{8}$ ")	2
10.	2-2903	Spring washer, for bolt line 9 ($13/32$ " \times $9/16$ " \times $1/16$ ")	
11.	68-5134	Spacer, top bearing	2
12.	40-414	Nut, damper rod ($1/4$ " B.S.C.)	2
13.	41-5134	Damper valve seat	2
14.	41-5139	Damper valve	2
15.	41-5140	Damper valve collar	2
16.	41-5144	Damper tube bush	2
17.	97-3693	Fork cover (left-hand)	
17.	97-3694	Fork cover (right-hand)	
18.	68-5104	Washer, headlamp mounting	2
19.	97-1932	Spacer, headlamp mounting (first sets only)	2
19.	68-5108	Spacer, headlamp mounting (after first sets)	2
20.	2-49	Nut, damper rod ($5/16$ " B.S.C.)	2
21.	68-5170	Oil seal	2
22.	68-5171	Oil seal retainer	2
23.	41-5135	Outer circlip, damper tube	2
24.	68-5143	Damper rod	2
25.	41-5124	Damper tube	2
26.	97-2514	Oil seal holder	2
27.	65-5451	Fork oil seal	2
28.	97-2682	"O" ring, oil seal holder	2
29.	41-5145	Washer, damper tube bolt (alloy $7/16$ " \times $21/64$ " \times $1/32$ ")	2
30.	97-2688	Damper tube bolt ($5/16$ " B.S.F. \times $3/4$ ")	2
31.	65-5424	Fork top bush	2
32.	97-2564	Sliding tube (right-hand)	2
33.	68-5146	Sliding tube (left-hand)	



FRONT FORKS

Code	Spares No.	Description	Per Set
34.	41-5141	Fork drain plug	2
35.	68-5197	Washer, drain plug	2
36.	75-3144	Nut, heat sink bolt ($\frac{5}{16}$ " B.S.C.)	2
37.	68-9429	Diode retaining clip	
38.	36-382	Lockwasher, heat sink	
39.	29-9388	Spacer, heat sink	
40.	2-923	Washer, heat sink	
41.	40-9134	Bolt, heat sink ($\frac{5}{16}$ " B.S.C. \times 3")	
42.	14-303	Nut, for bolt line 59 ($\frac{3}{8}$ " U.N.F.)	2
43.	2-2138	Washer, pinch bolt nut	2
44.	97-2526	Fork bottom yoke	
45.	40-5144	Steering bottom cone	
46.	97-2704	Steel ball, steering head	40
47.	40-5143	Steering top cone	
48.	40-5145	Top cone dust cover	
49.	97-2525	Fork top yoke	
50.	64-6016	Nut, for bolt line 58 ($\frac{3}{8}$ " B.S.C.)	
51.	41-5143	Inner circlip, damper tube	2
52.	65-5333	Handlebar clip	2
53.	15-5155	Washer, for bolt line 54 ($21/64"$ \times $1/2"$ \times .048")	4
54.	68-5056	Bolt, handlebar clip ($\frac{5}{16}$ " B.S.C. \times $1\frac{1}{8}"$)	4
55.	40-5018	Steering head cap nut	
56.	76-9325	Grommet, guide bracket	2
57.	68-5137	Cable guide bracket	2
58.	27-5135	Pinch bolt, top yoke ($\frac{3}{8}$ " B.S.C.)	
59.	21-785*	Pinch bolt, bottom yoke ($\frac{3}{8}$ " U.N.F. \times $2\frac{7}{16}"$)	2
60.	40-5090	Cable guide clip	
61.	47-5065	Oil seal	2
62.	47-5064	Oil seal retainer	4
63.	68-9428	Heat sink	
64.	2-49	Nut, heat sink bolt ($\frac{5}{16}$ " B.S.C.)	
65.	2-923	Washer, heat sink ($\frac{5}{16}"$ \times $\frac{5}{8}"$ \times $\frac{1}{16}"$)	
	97-2565	Front fork complete	

*Special material: 59.—EN15.



FRONT WHEEL

Code	Spares No.	Description	Per Set
1.	67-5566	Wheel spindle	
2.	68-5551	Bearing retainer (left-hand)	
3.	41-6016	Bearing (Hoffman LS9RS)	
4.	68-5556	Wheel rim (WM2-19)	
5.	67-5545	Spoke (long)	20
6.	27-6810	Spoke nipple	40
7.	42-5873	Balance weight ($\frac{3}{4}$ ")	as reqd.
7.	42-5875	Balance weight (1")	as reqd.
8.	67-5544	Spoke (short)	20
9.	28-2080	Hub grease nipple	
10.	68-5535	Hub with spindle and bearings	
11.	67-5565	Spindle sleeve	
12.	41-6016	Bearing (Hoffman LS.9RS)	
13.	60-2683	Split pin, bearing retainer ($\frac{1}{16}$ " \times $\frac{3}{8}$ ")	2
14.	68-5541	Leading brake shoe	
15.	19-7732	Brake lining	2
16.	67-5576	Fulcrum pin	
17.	24-5860	Nut, anchor strap stud ($\frac{7}{16}$ " B.S.C.)	
18.	42-5520	Anchor strap	
19.	15-716	Spring washer, anchor strap ($29/64$ " \times $15/16$ " \times $\frac{1}{16}$ ")	
20.	15-541	Nut, anchor strap ($\frac{7}{16}$ " B.S.C.)	
21.	67-5577	Stud, anchor strap ($\frac{7}{16}$ " B.S.C.)	
22.	25-6014	Washer, fulcrum pin	
23.	35-37	Spring washer, fulcrum pin	
24.	42-5883	Nut, fulcrum pin ($\frac{5}{8}$ " B.S.C.)	
25.	28-2080	Grease nipple, cam spindle	
26.	67-5555	Brake anchor plate	
27.	2-440	Nut, brake lever ($\frac{7}{16}$ " B.S.C.)	
28.	66-4708	Lockwasher, brake lever ($\frac{7}{16}$ ")	
29.	15-431	Washer, brake lever ($\frac{7}{16}$ " \times $\frac{3}{4}$ " \times $\frac{1}{16}$ ")	
30.	65-5907	Brake lever	
31.	37-2243	Cam spindle	
32.	67-5575	Rivet, brake lining	14
33.	68-5543	Trailing brake shoe	
34.	68-5552	Bearing retainer (right-hand)	
35.	65-5904	Spring, brake shoe	2
	68-5554	Wheel with spindle and bearings	

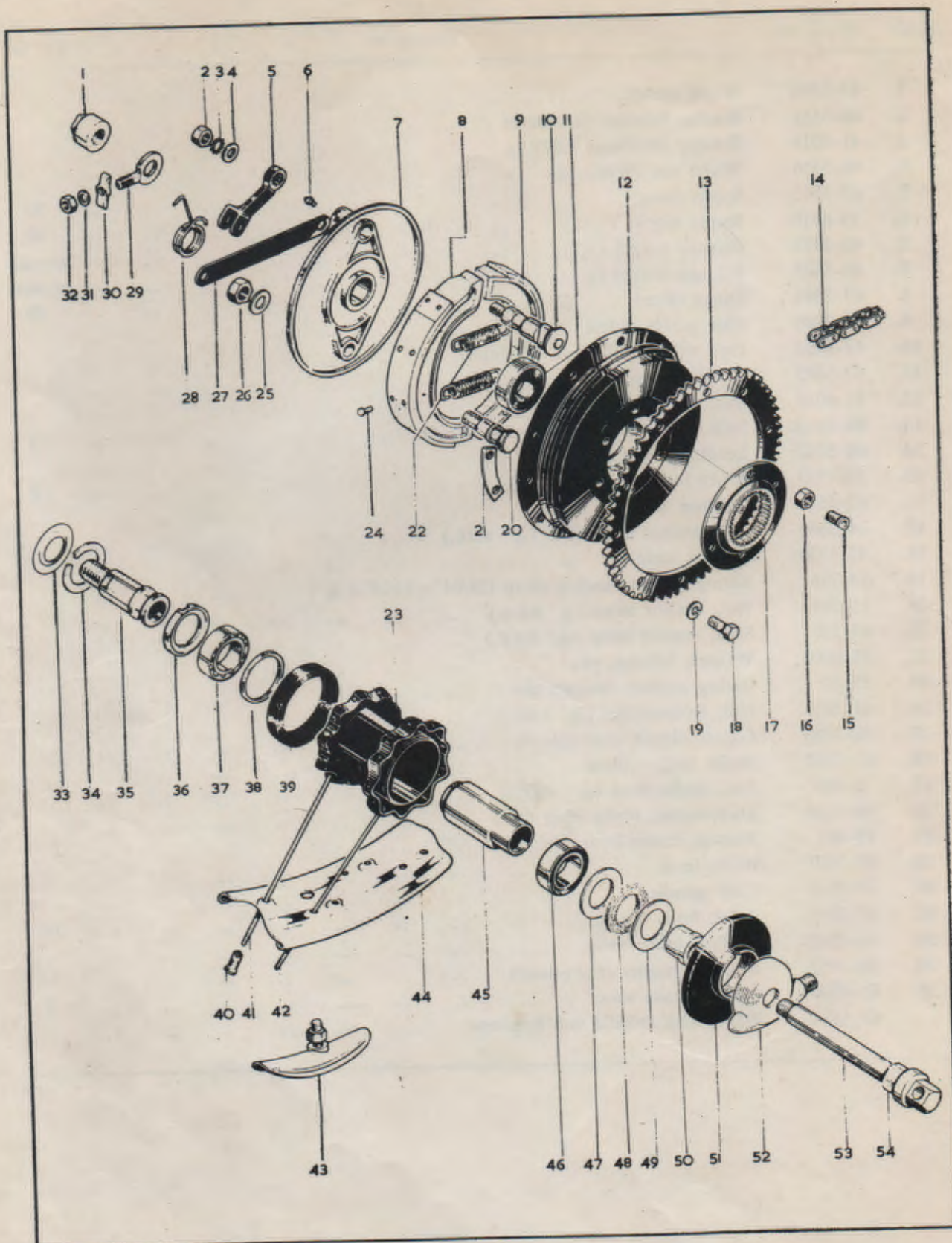
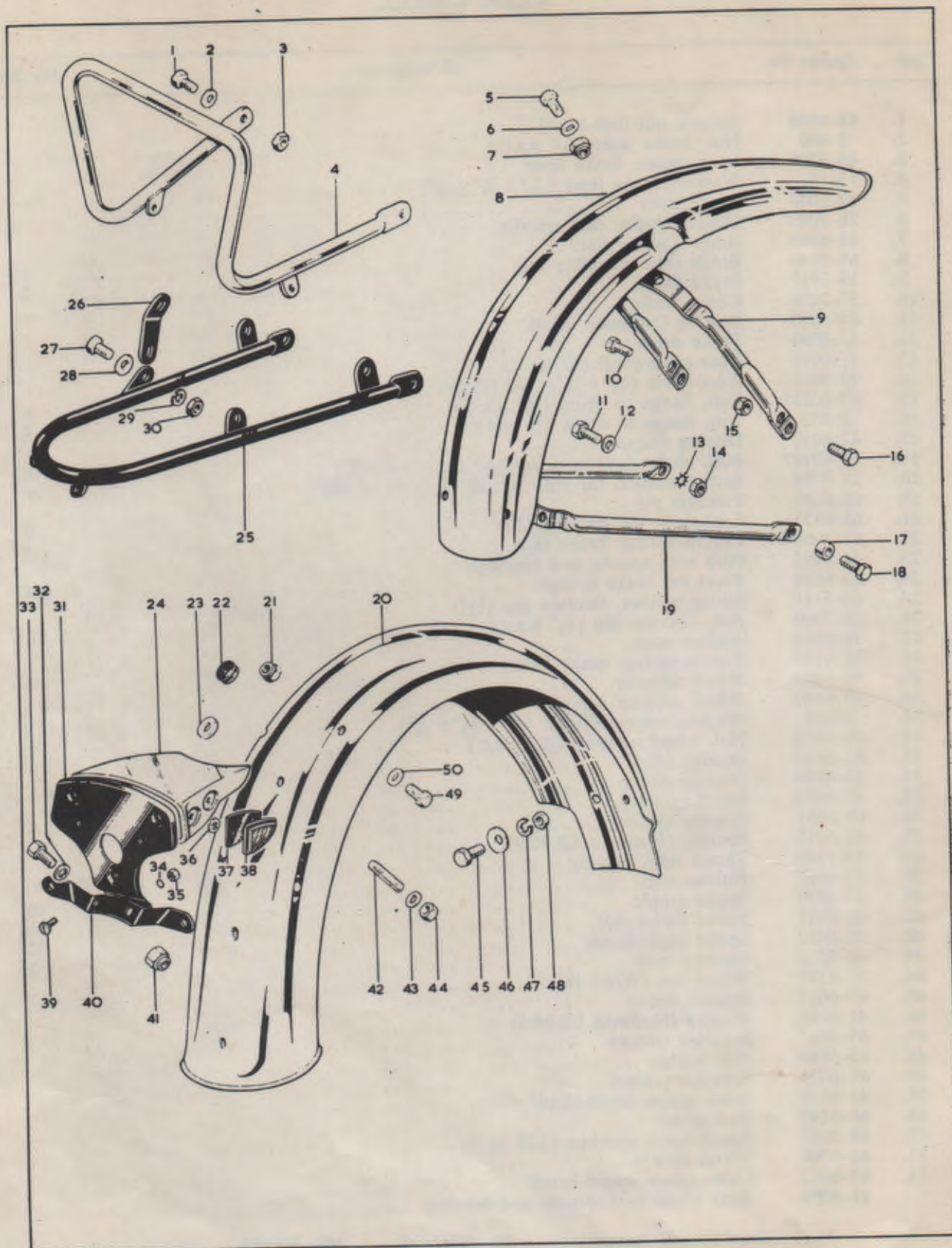


Plate 15

REAR WHEEL

Code	Spares No.	Description	Per Set
1.	68-6066	Spindle nut (left-hand)	..
2.	2-440	Nut, brake lever ($\frac{7}{16}$ " B.S.C.)	..
3.	66-4708	Lockwasher, brake lever	..
4.	15-431	Washer, brake lever ($\frac{7}{16}$ " \times $\frac{3}{4}$ " \times $\frac{1}{16}$ "	..
5.	42-6045	Brake lever	..
6.	28-2080	Grease nipple, cam spindle	..
7.	41-6093	Brake anchor plate	..
8.	65-5940	Brake shoe complete	2
9.	19-7717	Brake lining	2
10.	37-2226	Cam spindle	..
11.	65-5883	Bearing (Hoffman LS.9)	..
12.	41-6090	Brake drum	..
13.	41-6091	Rear chainwheel (49 teeth)	..
14.	19-8687	Rear chain ($\frac{5}{8}$ " \times $\frac{1}{4}$ " \times 100 pitch)	..
15.	67-6038*	Bolt, flange to drum ($\frac{3}{8}$ " B.S.C.)	6
16.	2-452	Nut, flange to drum ($\frac{3}{8}$ " B.S.C.)	6
17.	42-6019	Driving flange	..
18.	68-6095*	Bolt, chainwheel to drum ($\frac{5}{16}$ " U.N.F. \times 13/32")	10
19.	24-8784	Spring washer, for bolt line 18 ($\frac{5}{16}$ " \times $\frac{5}{8}$ " \times .040")	10
20.	68-6133	Fulcrum pin	..
21.	68-6135	Lockplate, for bolt line 15	3
22.	65-5904	Return spring, brake shoe	2
23.	41-6022	Hub with spindle and bearings	..
24.	35-6436	Rivet for brake linings	14
25.	65-5111	Spring washer, fulcrum pin ($\frac{1}{2}$ "	..
26.	24-7000	Nut, fulcrum pin ($\frac{1}{2}$ " B.S.C.)	..
27.	41-6094	Anchor strap	..
28.	68-6134	Return spring, brake lever	..
29.	40-6033	Wheel adjuster	2
30.	40-6040	Wheel adjuster cap	2
31.	2-923	Washer, wheel adjuster ($\frac{5}{16}$ " \times $\frac{5}{8}$ " \times $\frac{1}{16}$ "	2
32.	42-4476	Nut, wheel adjuster ($\frac{5}{16}$ " B.S.C.)	2
33.	67-6033	Bearing shim	..
34.	67-6034	Bearing circlip	..
35.	41-6032	Fixed spindle	..
36.	68-6081	Bearing retainer	..
37.	41-6016	Bearing (Hoffman LS.9RS)	..
38.	65-5884	Thrust ring, bearing	..
39.	67-6051	Rubber seal	..
40.	27-6810	Spoke nipple	40
41.	42-6011	Spoke (left-hand)	20
42.	42-6012	Spoke (right-hand)	20
43.	68-9575	Security bolt	2
44.	42-6371	Wheel rim (WM3-18)	..
45.	67-6027	Spindle sleeve	..
46.	41-6016	Bearing (Hoffman LS.9RS)	..
47.	65-5887	Retainer (inner)	..
48.	65-5886	Felt washer	..
49.	41-6021	Retainer (outer)	..
50.	41-6019	Inner spacer (right-hand)	..
51.	68-6142	End cover	..
52.	19-9217	Speedometer gearbox (1.25 to 1)	..
53.	41-6098	Wheel spindle	..
54.	41-6082	Outer spacer (right-hand)	..
	41-6009	Rear wheel with spindle and bearings	..

*Special material: 15.—EN14B. 18.—EN14B.



MUDGUARDS

Code	Spares No.	Description	Per Set
1.	28-2338	Bolt, handrail to support rail ($\frac{5}{16}$ " B.S.C. \times 23/32")	2
2.	2-923	Washer, handrail to support rail ($\frac{5}{16}$ " \times $\frac{5}{8}$ " \times $\frac{1}{16}$ ")	2
3.	75-6594	Nut, handrail to support rail ($\frac{5}{16}$ " B.S.C.)	2
4.	41-9152	Handrail	
5.	2-204	Bolt, stay to mudguard ($\frac{1}{4}$ " B.S.C. \times $\frac{1}{2}$ ")	4
6.	27-8560	Washer, stay to mudguard ($\frac{1}{4}$ " \times $\frac{5}{8}$ " \times .048")	4
7.	40-414	Nut, stay to mudguard ($\frac{1}{4}$ " B.S.C.)	4
8.	41-6533	Front mudguard	
9.	82-8394	Centre stay, front mudguard	
10.	3-1156	Bolt, stay to fork leg, left-hand ($\frac{5}{16}$ " B.S.C. \times $\frac{7}{8}$ ")	2
11.	15-7354	Bolt, stay to fork end, left-hand ($\frac{5}{16}$ " B.S.C. \times $\frac{5}{8}$ ")	
12.	2-923	Washer, stay to fork end ($\frac{5}{16}$ " \times $\frac{5}{8}$ " \times $\frac{1}{16}$ ")	2
13.	36-382	Lockwasher, stay to fork end ($\frac{5}{16}$ ")	2
14.	2-1616	Nut, stay to fork end ($\frac{5}{16}$ " B.S.C.)	2
15.	75-3144	Nut, stay to fork leg ($\frac{5}{16}$ " B.S.C.)	4
16.	64-6054*	Bolt, stay to fork leg, right-hand ($\frac{5}{16}$ " B.S.C. \times 1-7/64")	2
17.	2-370	Spacer, stay to fork end	
18.	40-6022	Bolt, stay to fork end, right-hand ($\frac{5}{16}$ " B.S.C. \times $\frac{7}{8}$ ")	
19.	40-6570	Bottom stay, front mudguard	
20.	82-8367	Rear mudguard — first sets only	
20.	82-9989	Rear mudguard — after first sets	
21.	42-4476	Nut, guard to support rail ($\frac{5}{16}$ " B.S.C.)	2
22.	67-6839	Wiring grommet	2
23.	76-101	Spacer, tail lamp support — first sets only	
23.	76-100	Spacer, tail lamp support — after first sets	
24.	83-254	Tail lamp support complete — first sets only	
24.	83-270	Tail lamp support complete — after first sets	
25.	41-6782	Support rail	
26.	68-6802	Bracket, support rail to guard	2
27.	27-6742	Bolt, bracket to support rail ($\frac{5}{16}$ " B.S.C. \times 37/64")	2
28.	2-923	Washer, bracket to support rail ($\frac{5}{16}$ " \times $\frac{5}{8}$ " \times $\frac{1}{16}$ ")	2
29.	24-8784	Spring washer, bracket to support rail ($\frac{5}{16}$ " \times $\frac{5}{8}$ " \times .040")	2
30.	2-49	Nut, bracket to support rail ($\frac{5}{16}$ " B.S.C.)	2
31.	68-6835	Tail lamp support plate	
32.	27-8560	Washer, for bolt line 33 ($\frac{1}{4}$ " \times $\frac{5}{8}$ " \times .048")	2
33.	2-204	Bolt, number plate bracket ($\frac{1}{4}$ " B.S.C. \times $\frac{1}{2}$ ")	2
34.	54-170	Lockwasher, support plate bottom screw — after first sets	
35.	21-5161	Nut, support plate bottom screw (2 B.A.) — after first sets	
36.	82-8195	Push-fix, rear reflector	4
37.	82-8140	Rubber pad, rear reflector	2
38.	19-943	Rear reflector (Lucas 57111)	2
39.	54-9003	Screw, support plate to support (2 B.A. \times $\frac{5}{16}$ ") — first sets only	3
39.	54-9012	Screw, support plate to support (2 B.A. \times 13/32") — after first sets	3
40.	47-6806	Number plate bracket	2
41.	40-414	Nut, for bolt line 33 ($\frac{1}{4}$ " B.S.C.)	2
42.	31-222	Stud, tail lamp support ($\frac{1}{4}$ " B.S.C./WHIT.) — first sets only	
42.	70-2980	Stud, tail lamp support — after first sets	
43.	68-6832	Washer, tail lamp support — first sets only	
43.	54-9081	Washer, tail lamp support — after first sets	
44.	42-3249	Nut, tail lamp support stud ($\frac{1}{4}$ " B.S.C.)	
45.	2-204	Bolt, mudguard to frame ($\frac{1}{4}$ " B.S.C. \times $\frac{1}{2}$ ")	2
46.	40-6790	Washer, mudguard to frame	2
47.	2-1462	Spring washer, mudguard to frame ($\frac{1}{4}$ " \times 19/32" \times .040")	2
48.	2-2395	Nut, mudguard to frame ($\frac{1}{4}$ " B.S.C.)	2
49.	28-2338	Bolt, mudguard to top frame ($\frac{5}{16}$ " B.S.C. \times 23/32")	2
50.	2-923	Washer, mudguard to top frame ($\frac{5}{16}$ " \times $\frac{5}{8}$ " \times $\frac{1}{16}$ ")	2

*Special material: 16.—EN15.

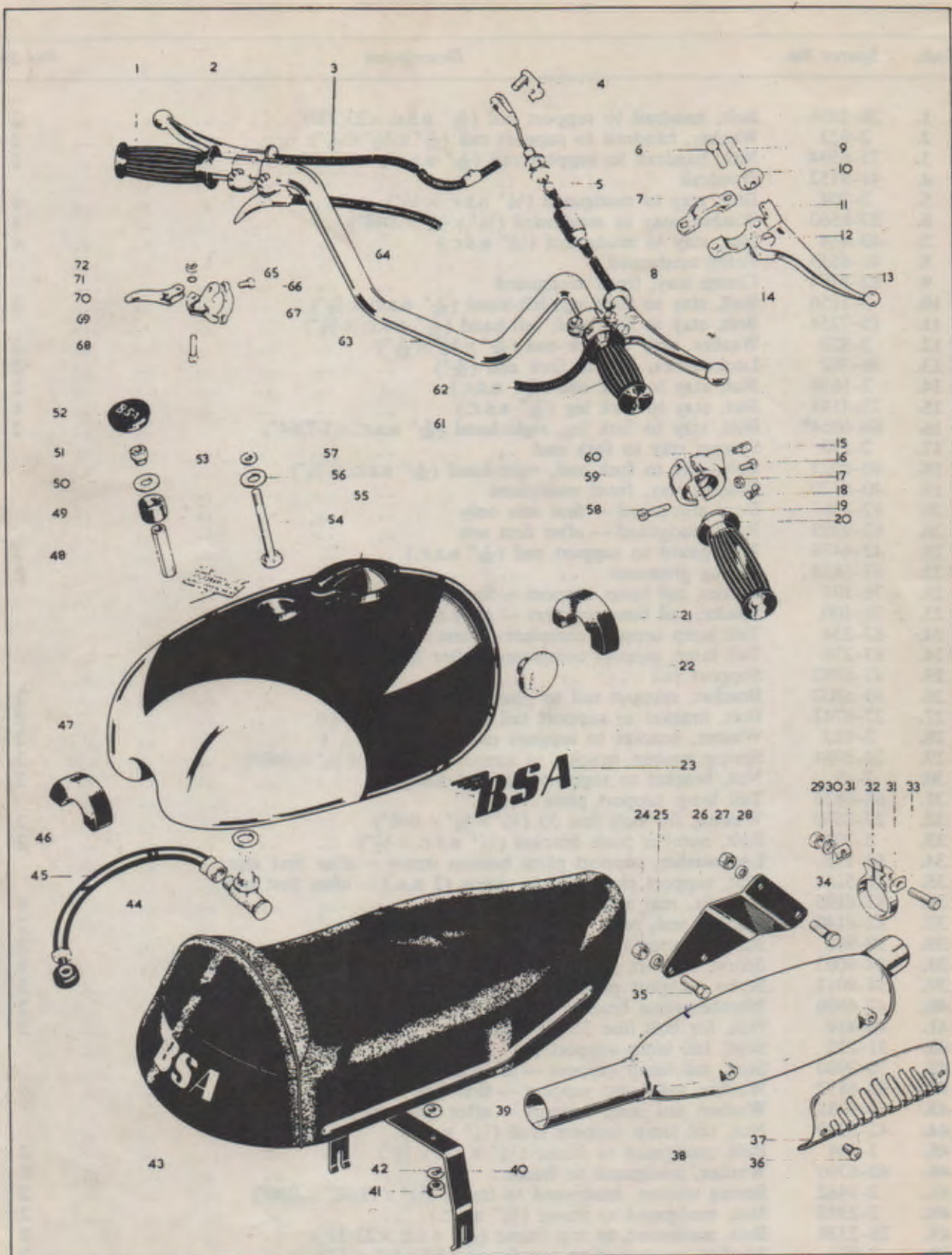
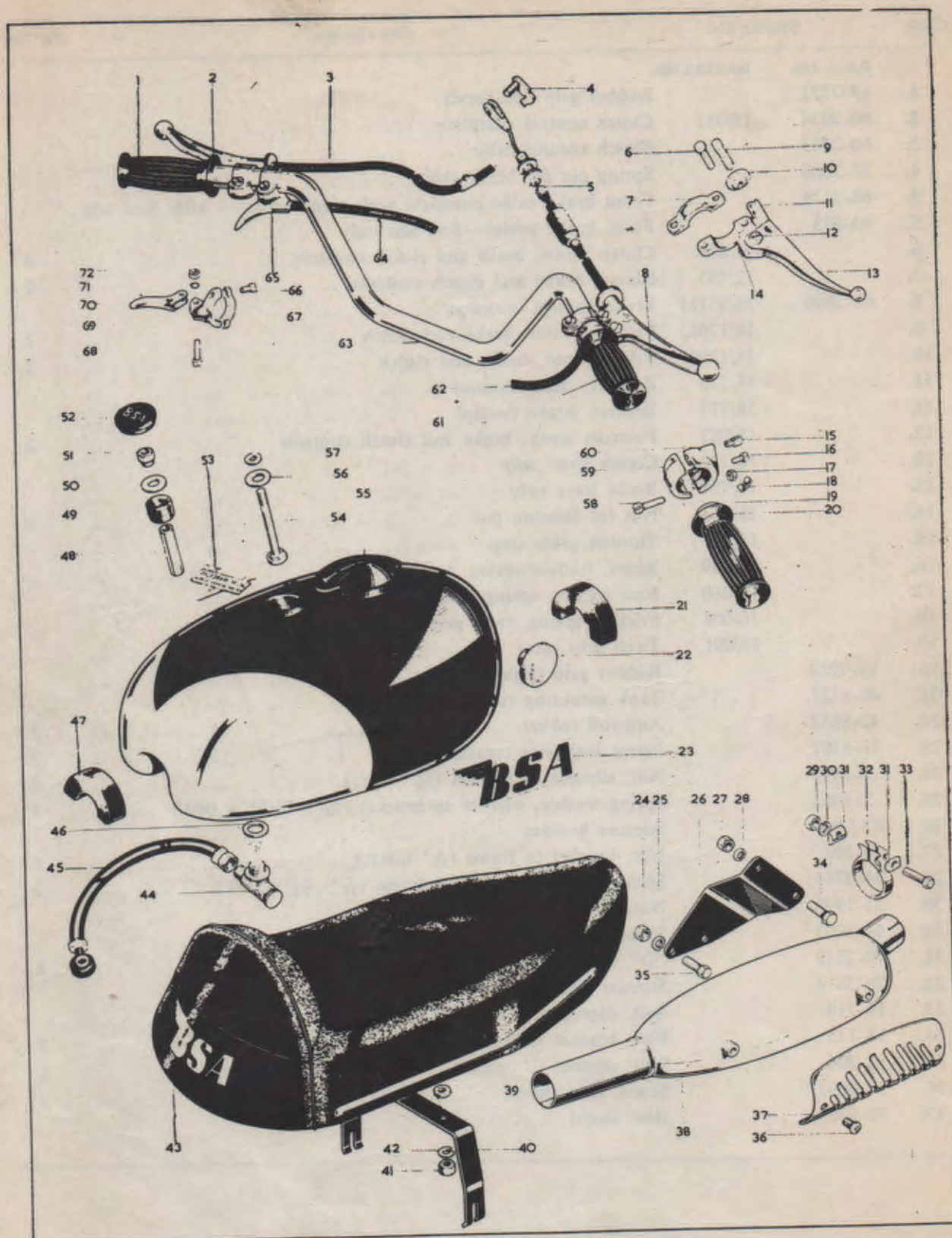


Plate 17

PETROL TANK, TWINSEAT, HANDLEBAR AND CONTROLS

Code	Spares No.		Description	Per Set
	B.S.A. NO.	MAKERS NO.		
1.	19-7221		Rubber grip (left-hand)	
2.	60-2074	18/952	Clutch control complete	
3.	60-2083		Clutch control cable	
4.	37-2006		Spring pin for brake cable	
5.	60-2119		Front brake cable complete with stop switch — after first sets	
5.	60-883		Front brake cable — first sets only	
6.		11/014	Clamp screw, brake and clutch controls	4
7.		12/595	Clamp, brake and clutch controls	2
8.	60-2090	18/951M	Brake control complete	
9.		18/1708	Cable adjuster, brake and clutch	2
10.		18/1709	Adjuster nut, brake and clutch	2
11.		18/773	Bracket, clutch control	
11.		18/777	Bracket, brake control	
12.		18/087	Fulcrum screw, brake and clutch controls	2
13.		18/752	Clutch lever only	
13.		18/754	Brake lever only	
14.		18/053	Nut for fulcrum pin	2
15.		16/011	Throttle cable stop	
16.		16/009	Screw, friction spring	
17.		16/010	Nut, friction spring screw	
18.		16/008	Friction spring, twist grip	
19.		16/091	Twist grip rotor	
20.	19-7222		Rubber grip (right-hand)	
21.	40-8121		Tank mounting rubber (front)	
22.	42-8052		Anti-roll rubber	2
23.	41-8107		Petrol tank side transfer	2
24.	2-2395		Nut, silencer to bracket ($\frac{1}{4}$ " B.S.C.)	2
25.	2-1462		Spring washer, silencer to bracket ($\frac{1}{4}$ " \times $\frac{19}{32}$ " \times .040")	2
26.	82-9945		Silencer bracket	
27.	14-302		Nut, bracket to frame ($\frac{5}{16}$ " U.N.F.)	2
28.	24-8784		Spring washer, bracket to frame ($\frac{5}{16}$ " \times $\frac{5}{8}$ " \times .040")	2
29.	21-1908		Nut, silencer clip ($\frac{5}{16}$ " U.N.F.)	
30.	54-8003		Spring washer, silencer clip	
31.	75-2719		"D" washer, silencer clip	2
32.	70-5874		Silencer clip complete	
33.	14-219		Bolt, silencer clip ($\frac{5}{16}$ " U.N.F. \times $1\frac{1}{2}$ ")	
34.	14-115		Bolt, bracket to frame ($\frac{5}{16}$ " U.N.F. \times $\frac{7}{8}$ ")	2
35.	2-204		Bolt, silencer to bracket ($\frac{1}{4}$ " B.S.C. \times $\frac{1}{2}$ ")	2
36.	54-9003		Screw, heat shield	2
37.	70-8960		Heat shield	



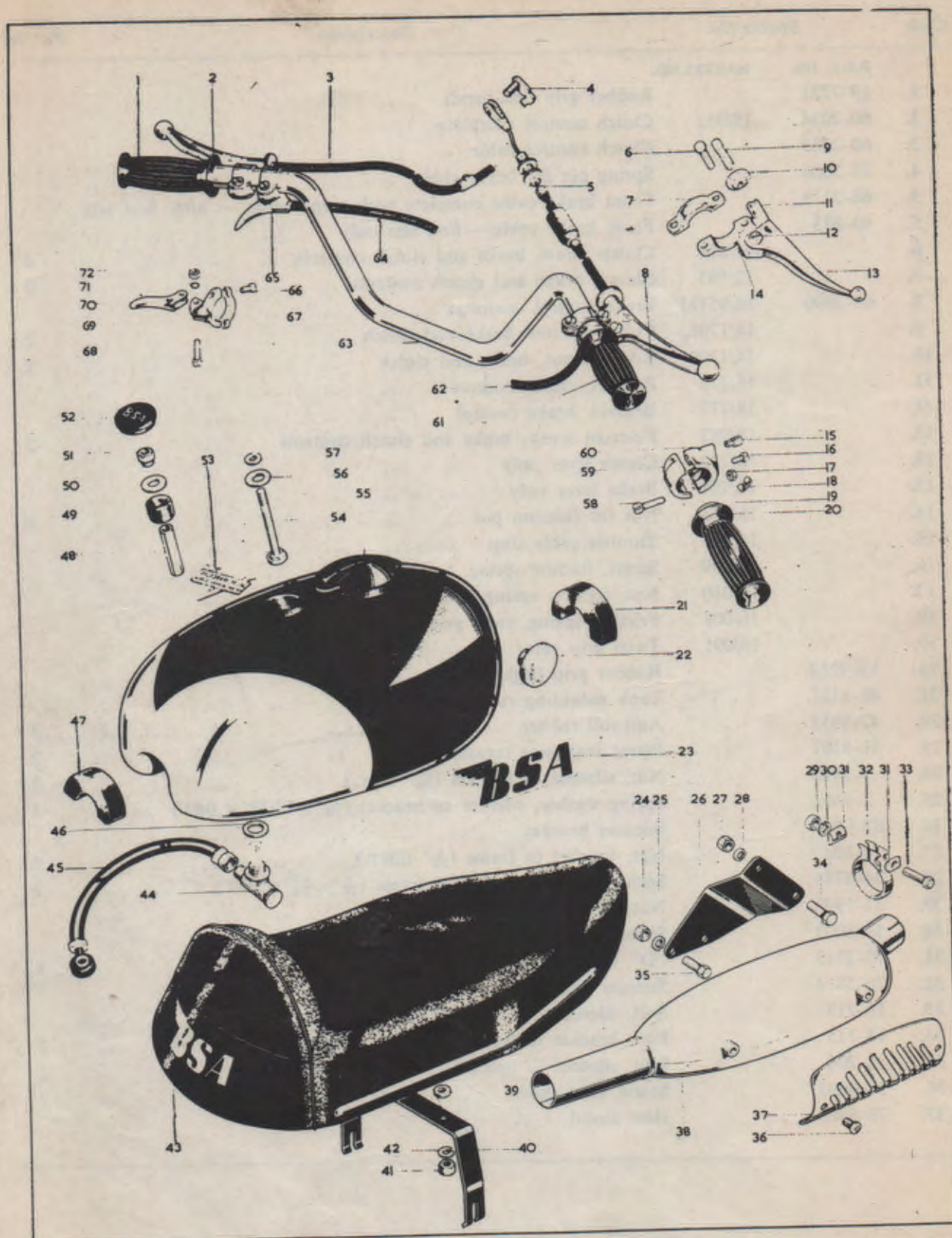
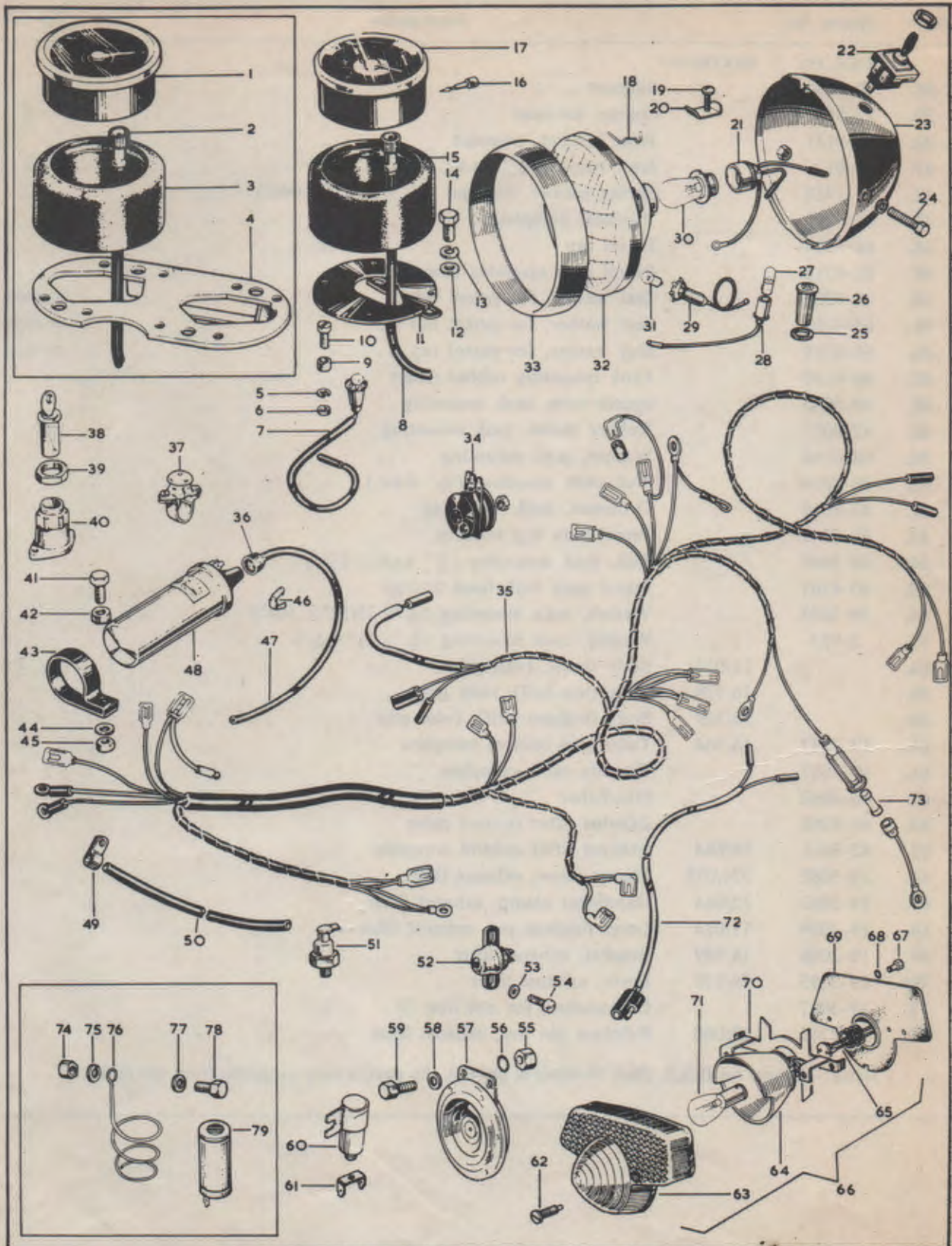


Plate 17—continued

PETROL TANK, TWINSEAT, HANDLEBAR AND CONTROLS

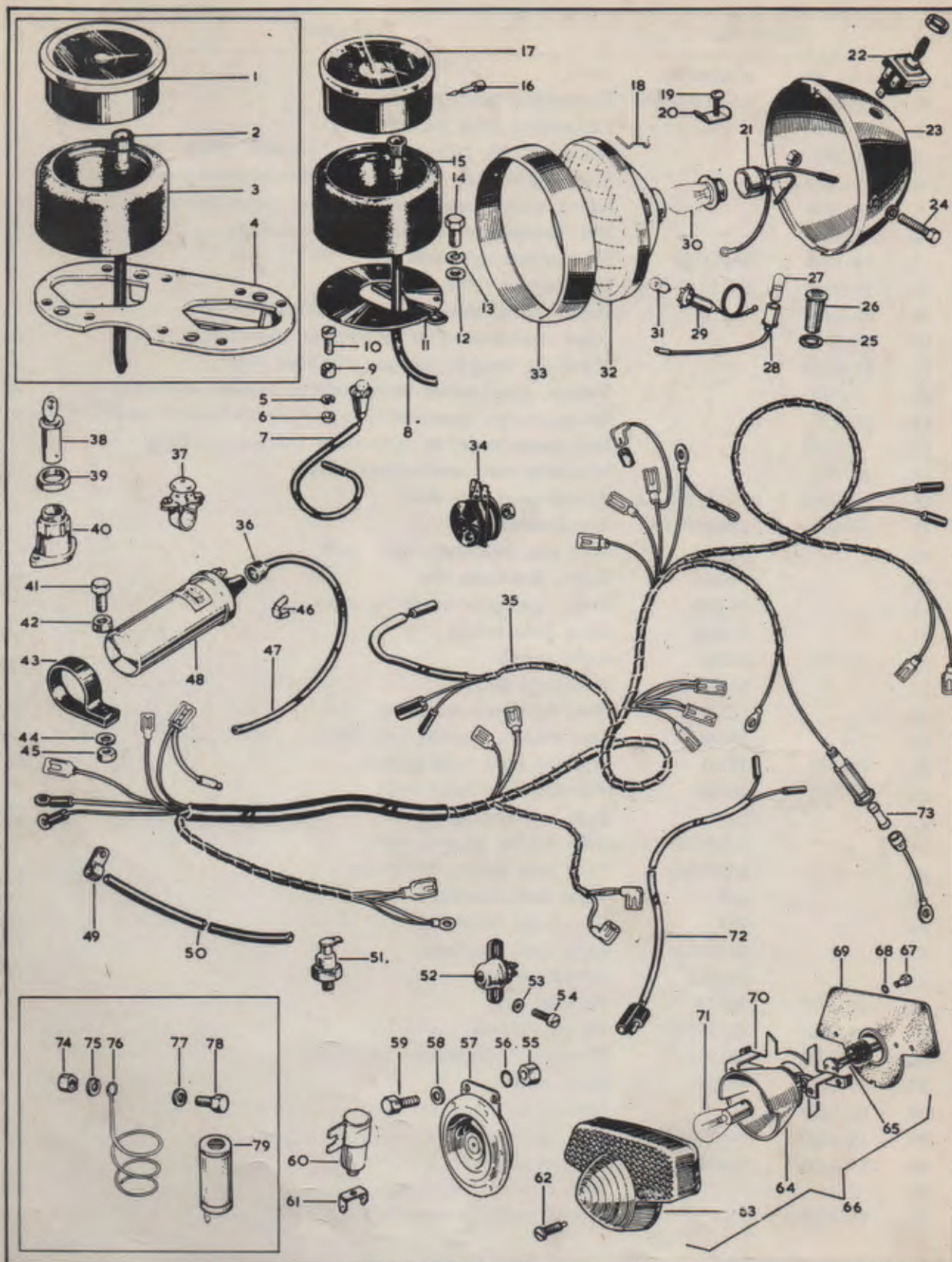
Code	Spares No.	Description	Per Set
	B.S.A. NO.	MAKERS NO.	
38.	70-9654	Silencer	2
39.	27-8560	Spacer, twinseat	2
40.	41-9131	Rear bracket, twinseat	2
41.	2-51	Nut, twinseat ($\frac{1}{4}$ " B.S.C.)	2
42.	2-1462	Spring washer, twinseat ($\frac{1}{4}$ " \times $\frac{19}{32}$ " \times .040")	2
43.	82-9732	Twinseat complete	
44.	68-8024	Petrol tap	
45.	82-8718	Petrol pipe assembly complete	
46.	82-9204	Seal washer, for petrol tap	as reqd.
46.	65-8218	Seal washer, for petrol tap	as reqd.
46.	65-8219	Seal washer, for petrol tap	as reqd.
47.	40-8140	Tank mounting rubber (rear)	
48.	68-8046	Spacer tube, tank mounting	
49.	42-8017	Rubber sleeve, tank mounting	
50.	68-8016	Washer, tank mounting	
51.	68-8014	Nut, tank mounting ($\frac{5}{16}$ " B.S.C.)	
52.	42-8010	Grommet, tank mounting	
53.	60-2042	Petrol tank top transfer	
54.	68-8045	Bolt, tank mounting ($\frac{5}{16}$ " B.S.C. \times $2\frac{7}{8}$ ")	
55.	40-8101	Petrol tank with fixed fittings	
56.	29-5655	Washer, tank mounting ($\frac{7}{16}$ " \times $\frac{25}{32}$ " \times .104")	
57.	2-923	Washer, tank mounting ($\frac{5}{16}$ " \times $\frac{5}{8}$ " \times $\frac{1}{16}$ ")	
58.		11/013 Body screw, twist grip	2
59.		16/328 Body (top-half), twist grip	
60.		16/329 Body (bottom half), twist grip	
61.	19-7223	16/364 Twist grip control complete	
62.	40-8657	Throttle cable complete	
63.	40-4960	Handlebar	
64.	41-8548	Exhaust lifter control cable	
65.	42-8611	18/864 Exhaust lifter control complete	
66.	19-3082	376/079 Clamp screw, exhaust lifter	2
67.	19-3083	12/064 Handlebar clamp, exhaust lifter	
68.	19-3084	11/014 Lever fulcrum pin, exhaust lifter	
69.	19-3086	18/869 Bracket, exhaust lifter	
70.	19-3085	18/871 Lever, exhaust lifter	
71.	19-3087	Lockwasher, for nut line 72	
72.	19-2763	18/060 Fulcrum pin nut, exhaust lifter	

NOTE:—Where no B.S.A. Part Number is quoted, the part is only available from the makers.



ELECTRICAL EQUIPMENT

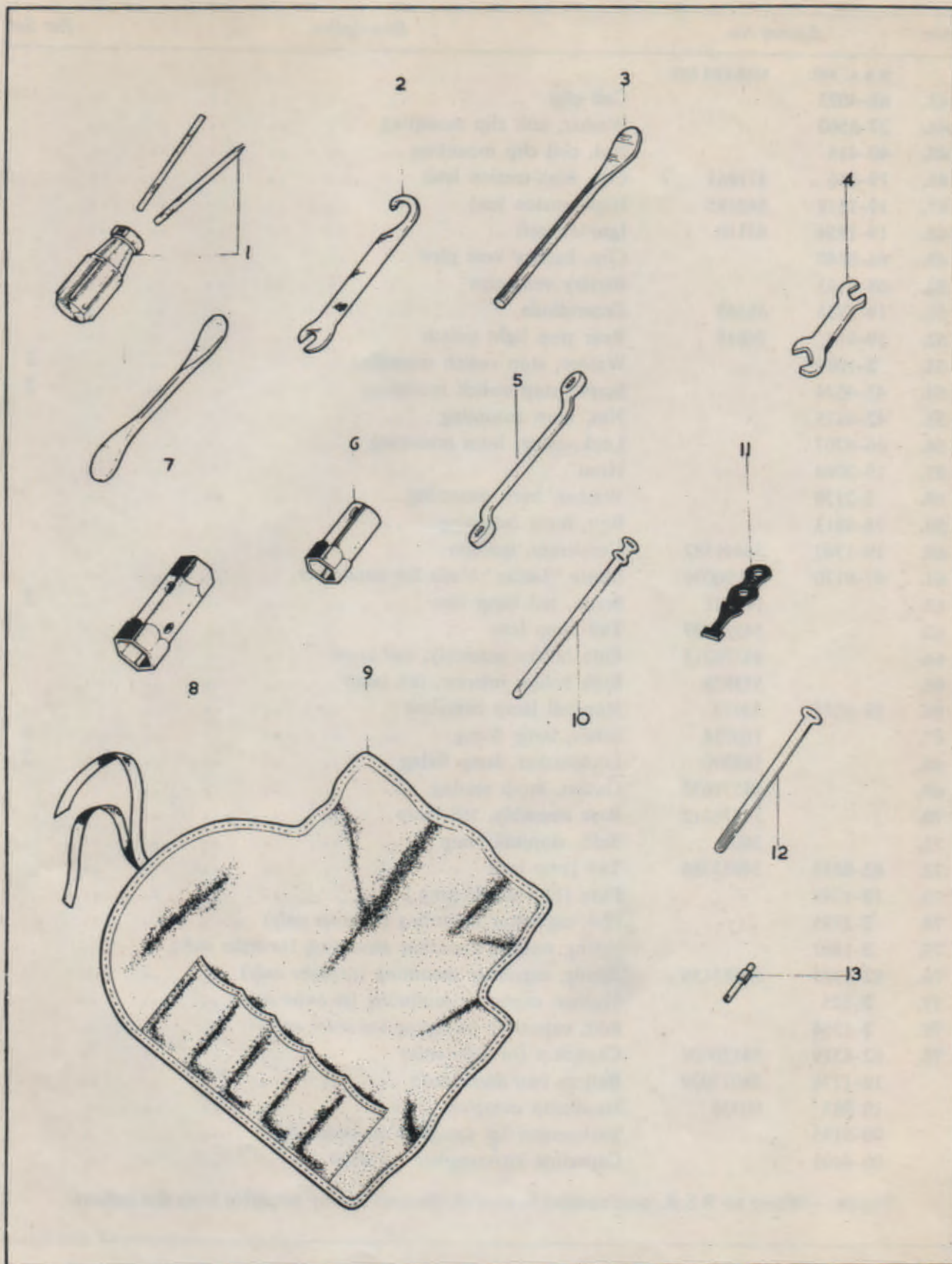
Code	Spares No.		Description	Per Set
	B.S.A. NO.	MAKERS NO.		
1.	19-8944	RSM.3003/01	Tachometer head (<i>to order only</i>)	
2.	19-9094		Tachometer cable (<i>to order only</i>)	
3.	83-281		Mounting cup, tachometer head (<i>to order only</i>)	
4.	97-3689		Mounting bracket, speedometer and tachometer (<i>to order only</i>)	
5.	24-7068		Spring washer, speedometer or tachometer mounting	4
6.	2-47		Nut, speedometer or tachometer mounting	4
7.	19-1166	54953389	Speedometer light lead	
8.	19-9089	DF.9110/00/63	Speedometer cable	
9.	68-9418		Spacer, speedometer or tachometer mounting	4
10.	76-543		Screw, speedometer or tachometer mounting	4
11.	82-8283		Mounting bracket, speedometer head only	
12.	2-525		Washer, speedometer or tachometer bracket mounting	2
13.	24-978		Spring washer, speedometer or tachometer bracket mounting	2
14.	2-1354		Bolt, speedometer or tachometer bracket mounting	2
15.	83-281		Mounting cup, speedometer head	
16.	19-9080	41-148-203-108-0	Speedometer trip shaft	
17.	19-8936	SSM.5001/05	Speedometer head	
18.		504665	Wire clip, headlamp light unit	5
19.		144921	Screw, headlamp rim	
20.		534296	Plate, headlamp rim fixing screw	
21.		554602	Main bulb holder	
22.	19-964	35710	Light switch	
23.		54524000	Headlamp body	
24.		112201	Bolt, headlamp mounting	2
25.		54140331	Seal washer, warning light body	2
26.	19-982	38191	Warning light body (green)	
26.	19-965	38189	Warning light body (red)	
27.		281	Bulb, warning light	2
28.		54945043	Bulb holder, warning light	2
29.		54573590	Pilot bulb holder, headlamp	
30.		464	Main bulb, headlamp	
31.		989	Pilot bulb, headlamp	
32.		54524526	Light unit, headlamp	
33.		534343	Headlamp rim	
34.	19-1715	49072	Rectifier	
35.	19-986	54955718	Wiring harness	
36.	75-9607	421554	Grommet, high-tension lead	
37.	19-1472	76204	Horn push	
38.	68-9304		Ignition lock and key	
39.	19-1247	54130041	Nut, ignition switch	
40.	19-1775	31899	Ignition switch	
41.	2-14		Bolt, coil clip mounting	
42.	75-9102		Spacer, coil clip mounting	



ELECTRICAL EQUIPMENT

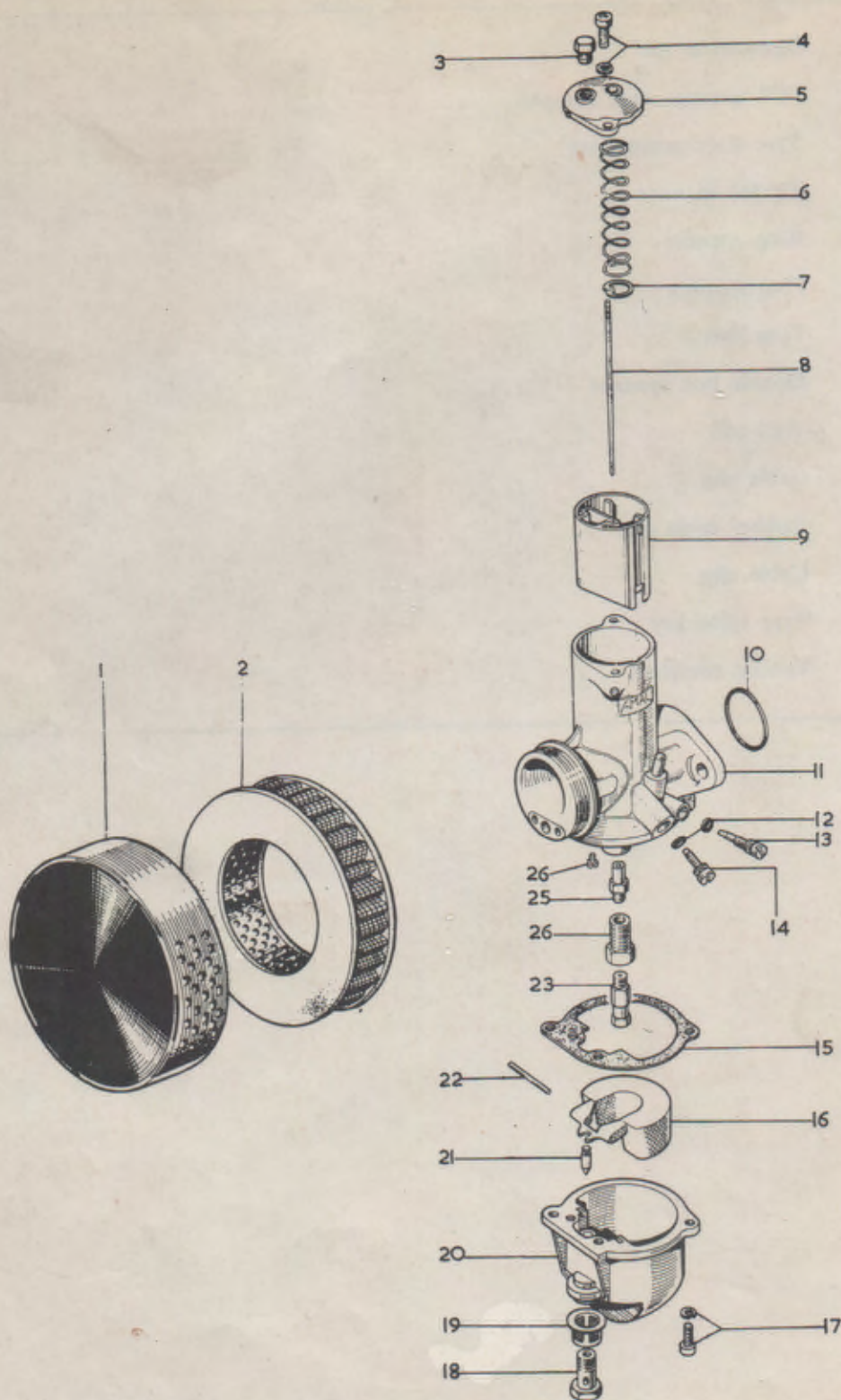
Code	Spares No.		Description	Per Set
	B.S.A. NO.	MAKERS NO.		
43.	68-4093		Coil clip	
44.	27-8560		Washer, coil clip mounting	
45.	40-414		Nut, coil clip mounting	
46.	19-866	421863	Clip, high-tension lead	
47.	19-1879	842185	High-tension lead	
48.	19-1854	45110	Ignition coil	
49.	66-8340		Clip, battery vent pipe	
50.	68-9163		Battery vent pipe	
51.	19-1735	49345	Zener-diode	
52.	19-916	34815	Rear stop light switch	
53.	2-1096		Washer, stop switch mounting	2
54.	42-4574		Screw, stop switch mounting	2
55.	42-4475		Nut, horn mounting	
56.	66-4707		Lockwasher, horn mounting	
57.	19-2064		Horn	
58.	2-2138		Washer, horn mounting	
59.	75-4813		Bolt, horn mounting	
60.	19-1747	54441582	Condenser, ignition	
61.	47-9170	54190096	Single "Lucar" blade for condenser	
62.		144921	Screw, tail lamp lens	2
63.		54577109	Tail lamp lens	
64.		54578213	Bulb holder assembly, tail lamp	
65.		573828	Bulb holder interior, tail lamp	
66.	19-1245	53973	Stop/tail lamp complete	
67.		110714	Screw, lamp fixing	2
68.		188330	Lockwasher, lamp fixing	2
69.		54571677	Gasket, lamp seating	
70.		54578212	Base assembly, tail lamp	
71.		380	Bulb, stop/tail lamp	
72.	82-8314	54953386	Tail lamp lead	
73.	19-1249		Fuse (12 volt, 35 amp.)	
74.	2-2395		Nut, capacitor mounting (to order only)	
75.	2-1462		Spring washer, capacitor mounting (to order only)	
76.	82-8320	54483156	Spring, capacitor mounting (to order only)	
77.	2-525		Washer, capacitor mounting (to order only)	
78.	2-1354		Bolt, capacitor mounting (to order only)	
79.	82-8319	54170009	Capacitor (to order only)	
	19-1776	54027029	Battery (not illustrated)	
	19-985	60034	Headlamp complete	
	00-5195		Tachometer kit complete (to order only)	
	00-4403		Capacitor kit complete (to order only)	

*NOTE:—Where no B.S.A. part number is quoted, the part is only available from the makers.



TOOLS AND SUNDRIES

<i>Code</i>	<i>Spares No.</i>	<i>Description</i>	<i>Per Set</i>
1.	60-767	Screwdriver set	
2.	68-9462	"C" spanner, rear damper	
3.	60-801	Tyre lever/tommy bar	
4.	65-9132	Tapper spanner	
5.	67-9026	Ring spanner	
6.	68-9464	Plug spanner	
7.	29-9252	Tyre lever	
8.	40-9017	Double box spanner	
9.	68-9461	Tool roll	
10.	76-9136	Cable clip	5
11.	90-9024	Rubber cable clip	2
12.	75-9045	Cable clip	3
13.	68-9467	Tyre valve key	
	60-2114	Toolkit complete	



CARBURETTER AND AIR CLEANER

Code	Spares No.		Description	Per Set
	B.S.A. NO.	AMAL NO.		
1.	60-1053		Air cleaner complete	
2.	19-7115		Air cleaner element	
3.		4/137A	Screw plug for top cap	
4.	19-3093	622/086	Screw and washer for top cap	2
5.		928/097	Mixing chamber top cap	
6.	19-3095	622/067	Throttle needle clip	
7.	19-3094	622/061	Throttle slide spring	
8.	19-3107	928/063	Throttle needle	
9.	19-3108	928/060	Throttle slide (number 3 cut-away)	
10.	19-3090	622/101	"O" ring, carburetter flange	
11.		R.930	Carburetter body	
12.	19-3098	622/082	"O" ring, pilot air and throttle stop screws	2
13.		622/076	Pilot air adjusting screw	
14.		622/077	Throttle stop screw	
15.	19-3106	622/073	Float chamber gasket	
16.	19-3102	622/069	Float	
17.	19-3093	622/086	Screw and washer, float chamber to body	2
18.	19-3103	622/078	Banjo bolt	
19.	19-3048	376/093	Petrol filter	
20.		622/050	Float chamber	
21.	19-3105	622/068	Float needle	
22.		622/071	Float spindle	
23.	19-2883	376/100	Main jet (230 c.c.)	
24.		622/080	Jet holder	
25.	19-3101	622/079	Needle jet (.107")	
26.	19-3100	124/026	Pilot jet (25 c.c.)	
	19-2400	R.930/11	Carburetter complete	

NOTE:—Where no B.S.A. part number is quoted, the part is only available from the makers.