

SMITHS MOTOR CYCLE EQUIPMENT

1962

THREE-WHEELERS, "BUBBLE" CARS, INVALID CHAIRS — see back cover

SMITHS

Motor Cycle Equipment — 1962

Make	Model & Description	Speedometer		Rev Indicator	Flexible Drive †		Gear Box	Gear Box Pinion	Gear Ring	Speedometer Bracket	K.L.G. Sparking Plugs	Petroflex
		Miles	Kilos		Complete	Length						
A.J.S.	14 248cc	SN.3170/22	SN.3170/39		DF.1110/22	5'2"	BG.5330/227				FE.80	
	14S	SN.3170/22	SN.3170/39		DF.1110/22	5'2"	BG.5330/227				FE.80	
	14CS 248cc	SN.3170/31	SN.3170/34		DF.1110/22	5'2"	BG.5330/267				FE.80	
	16 347cc	SC.1301/02	SC.1301/03		DF.1110/22	5'2"	BG.5330/267			31-674-110-01	FE.80	
	16S	SC.1301/02	SC.1301/03		DF.1110/22	5'5"	BG.5330/227				FE.80	
	16CS 347cc	SC.1302/01	SC.1302/02		DF.1110/22	5'5"	BG.5330/267				FE.80	
	8 348cc	SN.3170/26	SN.3170/27		DF.1110/22	5'3"	BG.5330/227				FE.80	
	7R O.H.C. 349cc †			ATRC.2625/N	DF.1111/15	1'10"	BG.1507/00				***	FFP.503/12
	18 498cc	SC.1301/02	SC.1301/03		DF.1110/22	5'5"	BG.5330/267			31-674-110-01	FE.80	
	18CS 497cc	SC.1302/01	SC.1302/02		DF.1110/22	5'5"	BG.5330/267				FE.80	
	31 Twin 646cc	SC.1301/02	SC.1301/03		DF.1110/22	5'5"	BG.5330/267			31-674-110-01	FE.80	
				ARC.1304/00	DF.1111/15	2'2½"	BG.1506/01					
					DF.1111/15	2'5½"	††					
	31CS Twin 646cc	SC.1302/01	SC.1302/02		DF.1110/22	5'2"	BG.5330/267				FE.80	
				ARC.1304/00	DF.1111/15	2'2½"	BG.1506/01					
					DF.1111/15	2'5½"	††					
AMBASSADOR	31CSR Twin 646cc	SC.1301/02	SC.1301/03		DF.1110/22	5'2"	BG.5330/267			31-674-110-01		
				ARC.1304/00	DF.1111/15	2'2½"	BG.1506/01					
					DF.1111/15	2'5½"	††					
	Electra 75	SC.3303/47			DF.1111/02	3'1"				31-674-109-01		
	Scooter 175cc +	SN.3170/48			DF.1110/00	4'11"	BG.5121/027				F.80	
	Super 'S'.249cc	SC.3303/19*	SC.3303/31*		DF.1111/02	3'1"				31-674-109-01	F.80	FFP.503/9
ARIEL	Super 'S'.Sport	SC.3303/19	SC.3303/31		DF.1111/02	3'1"					F.80	
	Three Star Special											
	200cc	SN.3170/05			DF.1111/02	3'1"					F.80	
	Popular	SN.3170/05			DF.1111/02	3'1"					F.80	
BOND	Leader Twin 249cc****											
	(Non-Trip Speedo.) ‡	SC.1301/00	SC.1301/01		DF.1111/19	3'1"					FE.80	
	Leader Twin 249cc****											
B.S.A.	(Trip Speedo)	SC.5309/00	SC.5309/01		DF.1111/19	3'1"					FE.80	
	TS2 Arrow 250cc	SN.3170/28	SN.3170/29		DF.1111/19	3'1"					FE.80	
BOND	P3 Scooter 148cc	SN.3170/14			DF.1111/02	3'8"					F.80	
	P4 Scooter 197cc	SN.3170/46			DF.1111/02	3'8"					F.80	
B.S.A.	Dandy 70cc (Headlamp Fitting)	SM.3601/00			DF.8231/02	2'8"	BG.5320/001				F.75	

† Tank Unit FT.5786/06 also fitted

‡ For Separate Inner & Outer Flexible Drives see Chart I (Page 9)

*** Recommendation on request according to Tune & Fuel etc.

* For Speedometer with Alternative Speed Range see Chart II (Page 9)

†† Special Machines for American Market
 ‡ Mounting Ring MS.1001/01 also required
 ‡ Optional Equipment
 **** Optional Lever Clock CL.2104/00 also available.

Make	Model & Description	Speedometer		Rev Indicator	Flexible Drive ‡		Gear Box	Gear Box Pinion	Gear Ring	Speedometer Bracket	K.L.G. Sparking Plugs	Petroflex
		Miles	Kilos		Complete	Length						
B.S.A. (Cont'd)	D1 Bantam 123cc	SC.1102/07			DF.1110/21	4'8"	BG.5331/247				F.70	
	D7 Bantam Super 174cc	SN.3170/19	SN.3170/20		DF.1110/21	4'8"	BG.5331/247				F.75	
	B1 Sunbeam 174cc	SN.3170/18			DF.1106/14	4'8½"					F.100	
	B2 Sunbeam Twin 249cc (O.H.V. 6 volt)	SN.3170/18			DF.1106/14	4'8½"					F.75	
	B2/S Sunbeam Twin 249cc (O.H.V. 12 volt)	SN.3170/17			DF.1106/14	4'8½"					F.75	
	CL5 250	SN.3170/11	SN.3170/12		DF.1110/21	4'8"	BG.5331/247				FE.75	
	CL5 O.H.V. Trials 249cc	SC.1102/14			DF.1110/21	4'8"	BG.5331/247				FE.75	
	CL5 Scrambles (U.S.A.)	SN.5301/03			DF.1110/21	4'8"	BG.5331/247				FE.75	
	CL5 Starfire Roadster 250cc	SC.5301/03			DF.1110/21	4'8"	BG.5331/247				FE.75	
	CL5 Sports Star	SN.3170/36	SN.3170/37		DF.1110/21	4'8"	BG.5331/247				FE.75	
	B32 & B34 Gold Star	SC.5301/03	SC.5301/12		DF.1110/20	3'10¾"						
				RC.1302/00	DF.1111/15	3'2"	BG.1508/04				FE.75 ++	PPF.506/14
	B32 & B34 Gold Star (U.S.A. only)	SC.5301/23		RC.1302/00	DF.1111/15	3'2"	BG.1508/04				FE.75 ++	PPF.506/14
	B32 & B34 Gold Star Scrambles	SC.5301/07 *			DF.1110/20	3'10¾"					FE.75	
	B40 350cc	SN.3170/31	SN.3170/34		DF.1110/21	4'8"	BG.5331/247					
	A7 Twin Solo 497cc	SC.3305/04	SC.3305/05		DF.1110/20	3'8"				31-674-110-01	F.70	PPF.506/18
	A7 Twin Sidecar 497cc	SC.3305/06	SC.3305/07		DF.1110/20	3'8"				31-674-110-01	F.70	PPF.506/18
	A7 Shooting Star Twin Solo 497cc	SC.3305/04	SC.3305/05		DF.1110/20	3'8"				31-674-110-01	FE.100	PPF.506/18
	A7 Shooting Star Twin Sidecar 497cc	SC.3305/06	SC.3305/07		DF.1110/20	3'8"					FE.100	PPF.506/18
	A10 Super Rocket 646cc (with Cowl)	SC.3305/04	SC.3305/05		DF.1110/20	3'8"					FE.100	
				RC.1303/03	DF.1110/20	2'10½"					FE.100	
	A10 Super Rocket 646cc (less Cowl)	SC.5301/06 *	SC.5301/17 *		DF.1110/20	3'10¾"					FE.100	
				RC.1303/03	DF.1110/20	2'10½"					FE.100	
	A10 Super Rocket 646cc (less Cowl) (U.S.A.)	SC.5301/22			DF.1110/20	3'10¾"					FE.100	
				RC.1303/03	DF.1110/20	2'10½"					FE.100	
	A10 Golden Flash	SC.3305/04	SC.3305/05		DF.1110/20	3'8"					F.70	
	A10 Spitfire Scrambler (U.S.A.)	SC.5301/24			DF.1110/20	3'10¾"					F.100	
	M21 591cc	SC.5301/03	SC.5301/12		DF.1110/21	4'2"					FE.50** & F.50***	
	A50 Solo	SC.3313/00	SC.3313/01		DF.1110/20	3'8"					FE.80	
	A50 with Sidecar	SC.3313/04	SC.3313/05		DF.1110/20	3'8"						
	A65 Solo	SC.3313/02	SC.3313/03		DF.1110/20	3'8"						
	A65 with Sidecar	SC.3313/00	SC.3313/01		DF.1110/20	3'8"						
COTTON	Vulcan 197cc	SN.3170/02	SN.3170/03		DF.1111/15	3'0"					F.80	
	Trials 197cc	SC.1102/06			DF.1111/15	4'6"	BG.2510/00	31-813-120	31-812-110		F.80	

‡ For Separate Inner & Outer Flexible Drives see Chart I (Page 9)

‡ Optional Equipment

++ For Machines fitted with Alloy Heads

*** To ZM 218000 (Iron Heads)

** From ZM 218001 (Alloy Heads)

* For Speedometer with alternative speed range see Chart II (Page 9)

Make	Model & Description	Speedometer		Rev Indicator	Flexible Drive #		Gear Box	Gear Box Pinion	Gear Ring	Speedometer Bracket	K.L.G. Sparking Plugs	Petroflex
		Miles	Kilos		Complete	Length						
COTTON (Cont'd)	Herald 250cc	SN.3170/02	SN.3170/03		DF.1111/15	3'6"					F.80	PFP.503/8
	Double Gloster 250cc	SN.3170/02	SN.3170/03		DF.1111/15	3'6"					F.80	
	Continental 250cc	SN.3170/02	SN.3170/03		DF.1111/15	3'6"					F.80	
	Corsair	SN.3170/02	SN.3170/03		DF.1111/15	3'6"						
	Messenger 325cc Villiers Engine	SC.3303/17	SC.3303/02		DF.1111/15	3'6"				31-674-109-01	F.80	P.503/8
D.K.R.	Manx 249cc	SN.3170/16			DF.1110/00	3'0"	BG.5117/047				F.80	
	Capella 175cc (6v) +	SN.3171/00	SN.3171/01		DF.1110/00	3'1"	BG.5117/047				F.80	
D.M.W.	Bambi Scooter 98cc	SN.3170/52			DF.1106/14	3'0"	BG.5121/633				F.75	
	Dolomite II Twin 249cc	SC.3303/42			DF.1111/15	3'2"				31-674-109-01	F.80	
	Dolomite IIA 324cc	SC.3303/42			DF.1111/15	3'2"				31-674-109-01	F.80	
	Mk.9	SC.1101/07			DF.1111/15	3'2"					F.80	
	Mk.15 Trials	SC.1101/02			DF.1110/20	5'0"					F.80	
	Deemster KS	SC.3303/41			DF.1111/15	3'2"					F.80	
	Deemster ES	SC.3303/41			DF.1111/15	3'2"					F.80	
DOT	200 WR Trials 197cc	SC.1101/02			DF.1111/15	3'3"					(F.100 & F.220	
	250 WR Trials 249cc	SC.1101/02			DF.1111/15	3'3"					(* **	
	Trials Marshall 250cc	SC.1101/02			DF.1111/15	3'3"					FE.75	
	Scrambler Works Rep. 250cc	SC.1101/02			DF.1111/15	3'3"						
	Californian Scrambler TS	SC.1101/02			DF.1111/15	3'3"						
EXCELSIOR	C12 Consort	SC.1102/01	SC.1102/00		DF.1110/20	3'9 $\frac{1}{2}$ "	BG.5331/227				F.75	
	F12 Consort	SC.3303/21	SC.3303/43		DF.1110/20	4'5 $\frac{1}{2}$ "	BG.5331/227				F.75	
		SC.1102/16			DF.1110/20	4'9" #	BG.5115/607 #					
	ETT8 Talisman Twin	SN.3170/02	SN.3170/03		DF.1110/20	4'5 $\frac{1}{2}$ "	BG.5331/227				FE.70D	
	ETT9 Talisman Twin	SC.3303/21	SC.3303/43		DF.1110/20	4'8 $\frac{1}{2}$ "	BG.5331/227				FE.70D	
	Mk.12 Monarch Scooter	SN.3170/10			DF.1110/00	3'0"	BG.5116/047				FE.70D	
	ME.12 Monarch Scooter	SN.3170/13			DF.1110/00	3'0"	BG.5116/047				FE.70D	
FRANCIS & BARNET	87 Falcon 197cc	SN.3153/55	SN.3153/56		DF.1110/26	4'8"	BG.5330/247				FE.75 #	
	80 Cruiser 249cc	SN.3153/55	SN.3153/56		DF.1110/24	4'9"	BG.5330/247				FE.75	
	84 Cruiser 249cc	SN.3153/55	SN.3153/56		DF.1110/24	4'9"	BG.5330/247				FE.75	
	85 Trials 249cc	SC.1102/06			DF.1110/24	4'6"	BG.5330/247			31-615-417-01	FE.75	
	89 Cruiser Twin	SN.3153/55	SN.3153/56		DF.1110/24	4'9"	BG.5330/247				F.80	
	Plover 86	SN.3170/04			DF.1110/20	4'8"	BG.5330/227					
	Fulmer 88	SN.3170/42			DF.1110/24	4'0"	BG.5330/247					
GREEVES	20DC, 24DC)											
	25DC & 32DC)	SN.3170/09			DF.1111/16	4'8"	BG.2504/01	31-813-125	31-812-110		F.80	
	20TD & 24TD	SC.1102/15					BG.2504/01	31-813-125	31-812-110		F.80	
	24TE & 24TES	SC.1102/15			DF.1111/16	4'10"	BG.2504/01	31-813-125	31-812-110		F.80	
INDIAN (A.M.C.) For American Market.	Papoose Scooter 150cc	SN.3170/47			DF.1110/24	3'0"	BG.5330/027				FE.75	
	G1 Pinto 150cc	SN.3170/04			DF.1110/20	4'7"	BG.5330/227					

+ Tank Unit FT.5786/05 also fitted to De Luxe models

For sustained high speed use FE.80

* For Separate Inner & Outer Flexible Drives see Chart I (Page 9)

Optional Equipment

* F.100 (Normal Use)

** F.220 (Fast Touring)

Make	Model & Description	Speedometer		Rev Indicator	Flexible Drives †		Gear Box	Gear Box Pinion	Gear Ring	Speedometer Bracket	K.L.G. Sparking Plugs	Petroflex
		Miles	Kilos		Complete	Length						
INDIAN (A.M.C.) Cont'd	Pathfinder 250cc G2	SN.3170/22		ATRC.2652N	DF.1110/22	5'2"	BG.5330/227			31-674-110-01	FE.80	
	Arrow 250cc G20S	SN.3170/31			DF.1110/22	5'2"	BG.5330/267				FE.80	
	G50 Racer 496cc				DF.1111/15	1'10"	BG.1507/00					
	G80 Mohawk 500cc	SC.1301/02			DF.1110/22	5'5"	BG.5330/267					
	G80 CS Westener 500cc	SC.1302/01			DF.1110/22	5'5"	BG.5330/267					
	Typhoon 600cc G80TCS	SC.1302/01			DF.1110/22	5'5"	BG.5330/267				FE.80	
	Apache 650cc G12CS	SC.3312/00			DF.1110/22	5'2"	BG.5330/267				FE.80	
					DF.1111/15	2'2½"	BG.1506/01				FE.80	
	G15 Forty Five 750cc	SC.1301/02			DF.1110/22	5'5"	BG.5330/267					
	G50/CS	SC.1302/01			DF.1111/15	2'5½"	BG.1506/01					
JAMES	L1 Comet 100 98cc	SN.3170/04		RC.1304/00	DF.1110/20	4'7"	BG.5330/227				F.70	
	L15A Cadet 150 147cc	SN.3170/04			DF.1110/20	4'7"	BG.5330/227				F.70	
	L20S 172cc	SN.3170/04			DF.1110/20	4'7"	BG.5330/227				FE.70	
	SC1 Scooter 150cc	SN.3170/47			DF.1110/24	3'0"	BG.5330/027				FE.75	
	M.25	SN.3170/02			DF.1111/16	3'0"						
LAMBRETTA	Rallymaster Scooter	N.O.M.		RN.1103/00	DF.1111/15	4'2"	BG.1506/01				FE.75	
MATCHLESS	G2 248cc	SN.3170/22	SN.3170/39	ATRC.2652/N	DF.1110/22	5'2"	BG.5330/227			31-674-110-01	FE.80	
	G2S	SN.3170/22	SN.3170/39		DF.1110/22	5'2"	BG.5330/227				FE.80	
	G2GS 248cc	SN.3170/31	SN.3170/34		DF.1110/22	5'2"	BG.5330/267				FE.80	
	G3 347cc	SC.1301/02	SC.1301/03		DF.1110/22	5'2"	BG.5330/267				FE.80	
	G3S	SC.1301/02	SC.1301/03		DF.1110/22	5'5"	BG.5330/267				FE.80	
	G3C 347cc	SC.1302/01	SC.1302/02		DF.1110/22	5'5"	BG.5330/267				FE.80	
	G5 348cc	SN.3170/26	SN.3170/27		DF.1110/22	5'3"	BG.5330/227				FE.80	
	G50 496cc ♂				DF.1111/15	1'10"	BG.1507/00				***	
	G80 498cc	SC.1301/02	SC.1301/03		DF.1110/22	5'5"	BG.5330/267				FE.80	
	G80CS 497cc	SC.1302/01	SC.1302/02		DF.1110/22	5'5"	BG.5330/267				FE.80	
	G12 Twin 646cc	SC.1301/02	SC.1301/03		DF.1110/22	5'5"	BG.5330/267				FE.80	
	G12CS Twin 646cc	SC.1302/01	SC.1302/02		DF.1111/15	2'2½"	BG.1506/01				FE.80	
	G12CSR Twin 646cc	SC.1301/02	SC.1301/03		DF.1110/22	5'2"	BG.5330/267				FE.80	
NORMAN	Lido 55cc	SM.3101/00		RC.1304/00	DF.8231/02	2'11½"	BG.5348/111			31-674-110-01	F.70	
	Nippy 50cc	SM.3101/00			DF.8231/02	2'11½"	BG.5348/111				F.75	
	B2S Roadster (3 speed)											
	197cc	SN.3170/05			DF.1111/00	2'9"					F.80	
	B2S Roadster (4 speed)											
	197cc	SN.3170/05			DF.1111/00	3'0"					F.80	
	B2S Sports (3 speed)											
	197cc	SN.3170/05			DF.1111/00	2'9"					F.80	
	B2S Sports (4 speed)											
	197cc	SN.3170/08			DF.1111/00	3'0"					F.80	

† For Separate Inner & Outer Flexible Drives see Chart I (Page 9)
 ‡ Optional Equipment
 *** Recommendation on request according to Tune & Fuel etc.

♂ Mounting Ring MS.1001/01 also required
 ♂♂ Special Machines for American Market.

Make	Model & Description	Speedometer		Rev Indicator	Flexible Drive ‡		Gear Box	Gear Box Pinion	Gear Ring	Speedometer Bracket	K.L.G. Sparking Plugs	Petroflex
		Miles	Kilos		Complete	Length						
NORMAN (Cont'd)	B4 Roadster Twin 249cc	SN.3170/02	SN.3170/03		DF.1111/00	3'2"					F.80	
	B4 Sports Twin 249cc	SN.3170/02	SN.3170/03		DF.1111/00	3'2"					F.80	
	B4C Trials	SC.1102/04	SC.1102/05		DF.1111/00	2'11"					F.80	
	B4C Scrambler	SC.1102/04	SC.1102/05		DF.1111/00	2'11"					F.80	
NORTON	Jubilee 250 249cc	SN.3170/26	SN.3170/27		DF.1110/24	5'1½"	BG.5330/247				FE.100	
	40M 499cc			ATRC.2652	DF.1111/15	1'9"	BG.1507/01				***	
	50 348cc	SC.3303/17	SC.3303/02		DF.1110/22	5'7½"	BG.5330/257				FE.80	
	ES2 490cc	SC.3303/17	SC.3303/02		DF.1110/22	5'7½"	BG.5330/257				FE.80	
	88 Dominator 497cc	SC.3303/17	SC.3303/02		DF.1110/22	5'7½"	BG.5330/257				FE.80	
	30M 348cc			ATRC.2652	DF.1111/15	1'9"	BG.1507/01				***	
	99 Dominator 597cc	SC.3303/17	SC.3303/02		DF.1110/22	5'7½"	BG.5330/257				FE.80	
	650/99 650cc	SC.3303/46	SC.3303/11		DF.1110/22	5'7½"	BG.5330/257			31-674-109-01	FE.80	
	650/99 650cc			RC.1302/00	DF.1111/18	2'8"	BG.1506/05				FE.80	
	Normad	SC.3303/24			DF.1110/22	5'7½"	BG.5330/257					
	88 Deluxe	SC.3303/17	SC.3303/02		DF.1110/22	5'7½"	BG.5330/257					
	99 Deluxe	SC.3303/17	SC.3303/02		DF.1110/22	5'7½"	BG.5330/257					
PASHLEY	Rickshaw (Shaft Drive Model)	SC.3303/26 *			DF.1111/22	4'0"	BG.2500/06			31-674-110-01		
	Pashley/Enfield Heavy Duty	SC.1101/06			DF.1111/15	5'4"	BG.2507/08	41-280-118-00	31-812-302	31-163-103-01		
	PV.70	SN.3170/40	SN.3170/41		DF.1111/17	5'11"						
PANTHER (PHELOX & MOORE)	Princess TS.175cc (6 volt)	SN.3170/49			DF.1111/15	4'3"					F.75	
	Princess TS.175cc (12 volt)	SN.3170/50			DF.1111/15	4'3"					F.75	
	10/3A TS.197cc	SN.3170/45			DF.1111/15	5'0"	BG.2517/00				F.75	
	10/4 TS.197cc	SN.3170/08			DF.1111/15	3'1"					F.75	
	35 Sports Twin 249cc	SN.3170/02	SN.3170/03		DF.1111/15	3'1"					F.75	
	45 Sports Twin 324cc	SN.3170/24			DF.1111/15	3'1"					F.75	
	50 Sports Twin 324cc	SN.3170/24			DF.1111/15	3'1"					F.75	
PHILIPS	Gadabout 49cc	SM.3101/02			DF.8231/02	2'1"	BG.5338/121				F.50	
PHOENIX SCOOTERS	Standard 150cc	SN.3170/51			DF.1106/14	5'1"	BG.5101/11				F.75	
	Standard 175cc	SN.3170/51			DF.1106/14	5'1"	BG.5101/11				F.80	
	Standard 197cc	SN.3170/51			DF.1106/14	5'1"	BG.5101/11					
	Model S 150cc	SN.3170/10			DF.1106/14	5'1"	BG.5101/11					
	Model S 175cc	SN.3170/10			DF.1106/14	5'1"	BG.5101/11					
	Model S 197cc	SN.3170/10			DF.1106/14	5'1"	BG.5101/11					
	Super Deluxe 150cc	SN.3170/10			DF.1106/14	5'1"	BG.5101/11					
	Super Deluxe 175cc	SN.3170/10			DF.1106/14	5'1"	BG.5101/11					
	Super Deluxe 197cc	SN.3170/10			DF.1106/14	5'1"	BG.5101/11					
	Model T 250cc	SN.3170/51			DF.1111/15	5'8"					F.80	
	Model T 325cc	SN.3170/10			DF.1111/15	5'8"						
RALEIGH	Moped 49cc	SN.3110/00			DF.7302/01	2'2"		80622	80620		F.75	

‡ For Separate Inner & Outer Flexible Drives see Chart I (Page 9)

* For Speedometer with alternative speed range see Chart II (Page 9)

*** Recommendation on request according to Tune & Fuel etc.

Make	Model & Description	Speedometer		Rev Indicator	Flexible Drive ‡		Gear Box	Gear Box Pinion	Gear Ring	Speedometer Bracket	K.L.G. Sparking Plugs	Petroflex
		Miles	Kilos		Complete	Length						
ROYAL ENFIELD	Prince 148cc	SN.3170/02	SN.3170/03		DF.1110/20	2'1 $\frac{1}{2}$ "	BG.5303/05					
	Prince Airflow 148cc	SC.1102/04	SC.1102/05		DF.1110/20	2'3 $\frac{1}{2}$ "	BG.5303/05				F.50	
	250 Clipper 248cc	SC.1304/04	SC.1304/06		DF.1110/21	4'4"	BG.5331/247				F.50	
	250 Clipper Airflow 248cc	SC.1304/04	SC.1304/06		DF.1110/30	4'9"	BG.5331/247				F.80	
	Crusader 248cc	SC.1304/04	SC.1304/06		DF.1110/21	4'4"	BG.5331/247				F.80	
	Crusader Airflow 248cc	SC.1304/04	SC.1304/06		DF.1110/30	4'9"	BG.5331/247				F.80	
	Crusader Sports 248cc	SC.1304/04	SC.1304/06		DF.1110/21	4'4"	BG.5331/247				F.80	
	Crusader Sports Airflow 248cc	SC.1304/04	SC.1304/06	RC.1302/00	DF.1111/15	3'7"	BG.1508/04				F.80	
	Crusader Super 5	SC.3303/20		RC.1302/00	DF.1110/30	4'9"	BG.5331/247				F.80	
					DF.1111/15	3'7"	BG.1508/04					
				RC.1302/00	DF.1110/30	4'4"	BG.5331/247				F.80	
	250 Trials	SC.3303/14			DF.1111/15	3'7"	BG.1508/04					
	G2 Madras	SC.1304/08			DF.1110/21	4'4"	BG.5331/247					
	350 Bullet 346cc	SC.1304/04	SC.1304/06		DF.1110/21	4'6"						
	350 Bullet Airflow 346cc	SC.1304/04	SC.1304/06		DF.1110/30	4'11"	BG.5303/10				F.70	
	Meteor Minor Deluxe 496cc	SC.1304/04	SC.1304/06		DF.1110/21	4'6"	BG.5303/10				F.70	
	Meteor Minor Deluxe Airflow 496cc	SC.1304/04	SC.1304/06		DF.1110/30	4'11"	BG.5303/10				FE.75	
	Meteor Minor Sports 496cc	SC.1304/04	SC.1304/06		DF.1110/30	4'11"	BG.5303/10				FE.75	
	Meteor Minor Sports Airflow 496cc	SC.1304/04	SC.1304/06		DF.1110/21	4'6"	BG.5303/10				FE.75	
	500 Bullet 499cc	SC.1304/02	SC.1304/03		DF.1110/30	4'11"	BG.5303/10				FE.75	
	500 Bullet Airflow 499cc	SC.1304/02	SC.1304/03		DF.1110/21	4'6"	BG.5303/10				FE.75	
	Super Meteor 692cc	SC.1304/02	SC.1304/03		DF.1110/30	4'11"	BG.5303/10				FE.75	
	Super Meteor Airflow 692cc	SC.1304/02	SC.1304/03		DF.1110/21	4'6"	BG.5303/10				FE.75	
	Constellation 692cc	SC.1304/02	SC.1304/03		DF.1110/30	4'11"	BG.5303/10				FE.75	
	Constellation Airflow 692cc	SC.1304/02	SC.1304/03	RC.184	DF.1110/21	4'6"	BG.5303/10				FE.80	
					DF.1111/15	3'7"	BG.1508/01					
				RC.184	DF.1110/30	4'11"	BG.5303/10				FE.80	
					DF.1111/15	3'7"	BG.1508/01				FE.80	
SUN	Sunwasp Scooter 173cc (Siba Starter) (12v)	SN.3170/14			DF.1111/15	3'11"					F.80	
TRIUMPH	T2L Tigress 174cc	SN.3170/18			DF.1106/14	4'8 $\frac{1}{2}$ "						
	T2O Tiger Cub 199cc	SN.3170/00	SN.3170/01		DF.1110/20	4'10"	BG.5330/247				F.100	
	T2OS Tiger Cub Sports 199cc	SC.1102/11	SC.1102/12		DF.1110/22	4'10"	BG.5330/247				F.80	
	T2OS Scrambler Cub			RN.1102/00	DF.1111/15	2'4"						
	T2OSL Scrambler Cub	SC.1102/11	SC.1102/12		DF.1110/20	4'10"	BG.5330/247				F.75	
	T2OSL Scrambler Cub	SN.3172/00 *	SN.3172/01 *		DF.1110/20	4'10"	BG.5330/247				F.75	
	T2OSL Scrambler Cub			ARN.1102/00	DF.1111/15	2'4"					F.75	

‡ For Separate Inner & Outer Flexible Drives see Chart I (Page 9)

* Optional Trip Type Speedometers

≠ Optional Equipment

Make	Model & Description	Speedometer		Rev Indicator	Flexible Drive ‡		Gear Box	Gear Box Pinion	Gear Ring	Speedometer Bracket	K.L.G. Sparking Plugs	Petroflex
		Miles	Kilos		Complete	Length						
TRIUMPH (Cont'd)	T20T Trials Cub	SC.1102/11	SC.1102/12		DF.1110/20	4'10"	BG.5330/247				F.80	
	TW2 Tigress 250cc	SN.3170/18			DF.1106/14	4'8½"				31-674-110-01	FE.75	
	3TA Twenty One 348cc	SC.3304/11	SC.3304/18		DF.1110/20	4'10"	BG.5330/287			31-674-110-01	F.75	
	5TA Speed Twin 490cc	SC.3304/11	SC.3304/18		DF.1110/20	4'10"	BG.5330/287			31-674-110-01	FE.100	
	T100/A Tiger 100 490cc	SC.3304/11	SC.3304/18		DF.1110/20	4'10"	BG.5330/287			31-674-110-01	FE.100	
	6T Thunderbird 649cc	SC.3304/24	SC.3304/25		DF.1106/11	3'8"						
	TR5A Road Model											
	(Export only) 500cc	SC.5301/03	SC.5301/12		DF.1110/20	4'10"	BG.5330/287					
	TR5A Competition											
	(Export only) 500cc	SC.5301/09	SC.5301/16		DF.1110/20	4'10"	BG.5330/287				FE.100	
	TR6S Trophy 649cc	SC.5301/09	SC.5301/16	≠RC.1307/00	DF.1106/13	3'8"					FE.100	
VELOCETTE					DF.1111/15	2'4"					FE.100	
					DF.1106/13	3'8"					FE.100	
	T120 Bonneville 649cc	SC.5301/26	SC.5301/18	≠RC.1307/00	DF.1111/15	2'4"					FE.100	
	LE Mk.III 192cc	SN.3170/02	SN.3170/03		DF.1111/17	2'9"					TEN.L.30	
	Valiant Twin 192cc	SN.3170/02	SN.3170/03		DF.1111/17	2'9"					TEN.L.100	
	Valiant Vee Line											
	Twin 192cc	SN.3170/02	SN.3170/03		DF.1111/17	2'9"					TEN.L.100	
	Viper 349cc	SC.3308/00	SC.3308/01		DF.1110/22	5'5"	BG.5303/11			31-674-110-01	FE.100	
	Viper Clubmans 349cc	SC.3308/00	SC.3308/01		DF.1110/22	5'5"	BG.5303/11			31-674-110-01	FE.100	
				≠RC.1702/02	DF.1111/15	3'0"	BG.1507/02				FE.100	
	MSS 499cc	SC.3308/00	SC.3308/01		DF.1110/22	5'5"	BG.5303/11			31-674-110-01	FE.80	
	Venom 499cc	SC.3308/00	SC.3308/01		DF.1110/22	5'5"	BG.5303/11			31-674-110-01	FE.100	
	Venom Clubmans 499cc	SC.3308/00	SC.3308/01		DF.1110/22	5'5"	BG.5303/11			31-674-110-01	FE.100	
				≠RC.1302/02	DF.1111/15	3'0"	BG.1507/02				FE.100	
	Venom (Special Export Orders)			ATRC.2652	DF.1111/15	3'0"	BG.1507/02				FE.100	
	Endurance 499cc	SC.3308/00	SC.3308/01		DF.1110/22	5'5"	BG.5303/11			31-674-110-01	FE.100	
	Viceroy Scooter	SN.3170/32			DF.1111/17	5'7"					FE.80	
	Scrambler 349cc	SC.3308/00	SC.3308/01		DF.1110/22	5'5"	BG.5303/11				FE.100	
	Scrambler 499cc	SC.3308/00	SC.3308/01		DF.1110/22	5'5"	BG.5303/11				FE.100	

* For Separate Inner & Outer Flexible Drives see Chart I (Page 9)

≠ Optional Equipment

≠≠ Optional Equipment for Homemarket* & Standard Equipment for American Market.

Chart I FLEXIBLE DRIVES

Flexible Drive (Complete)	Inner Flexible Drive (Only)	Outer Flexible Drive (Only)
DF.1106/11	DI.1124/00	DO.1106/11
DF.1106/13	DI.1124/00	DO.1106/13
DF.1106/14	DI.1124/00	DO.1106/14
DF.1110/20	DI.1124/00	DO.1110/20
DF.1110/21	DI.1124/00	DO.1110/21
DF.1110/22	DI.1124/00	DO.1110/22
DF.1110/24	DI.1124/00	DO.1110/24
DF.1110/26	DI.1124/00	DO.1110/26
DF.1110/30	DI.1124/00	DO.1110/30
DF.1111/00	DI.1110/02	DO.1111/00
DF.1111/02	DI.1110/02	DO.1111/02
DF.1111/15	DI.1111/00	DO.1111/09
DF.1111/16	DI.1111/00	DO.1111/10
DF.1111/17	DI.1111/00	DO.1111/11
DF.1111/18	DI.1111/00	DO.1111/12
DF.1111/19	DI.1111/00	DO.1111/13
DF.1111/22	DI.1111/00	DO.1111/16
DF.7302/01	DI.7323/00	DO.7302/00
DF.8231/02	(Non Detachable)	

Chart I, above, shows the code numbers of the separate Inner and Outer Flexible Drives which form the complete Flexible Drives listed in the specification section of this booklet.

Chart II ALTERNATIVE SPEEDOMETERS

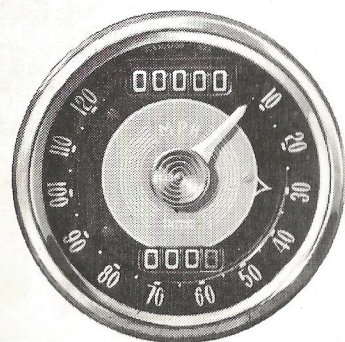
MILES		KILOS	
80 m.p.h.	120 m.p.h.	140 k.p.h.	180 k.p.h.
S.491/1/N	SC.5301/09	S.491/5/N	SC.5301/16
S.525/1/N	SC.5301/07	S.525/5/N	SC.5301/08
S.546/1/N	SC.5301/06	S.546/5/N	SC.5301/17
SC.3303/19	SC.3303/20	SC.3303/31	SC.3303/02
SC.3303/26	S.467/179/N	SC.5301/13	SC.5301/12
SC.3303/27	SC.3303/38	SC.3303/05	SC.3303/07

Chart II, above, shows instruments of a different speed range which are suitable as alternative to those marked with an asterisk in the specification section of this booklet.

SMITHS

Motor Cycle Equipment

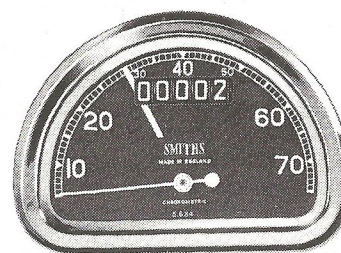
Illustrated on these pages is a representative range of the most popular types of motor cycle equipment manufactured by Smiths.



Speedometer 3" Chronometric Type

The movement is contained in a heavy pressed steel case, specially treated internally and externally against rust. The case is finished in black enamel and the screwed-on bezel is polished chromium plate. Also available with flange bezel and cadmium finished case for nacelle or headlamp installation.

Dial black with white figures and available with or without internal illumination.



"D" Shaped Speedometer

Chronometric Type, for Lightweight Motor Cycles.

Finished in a rust-proofed, black enamelled case with clear white figures on a black dial. Also available with flange bezel for nacelle or headlamp installation.

The internal illumination provides a soft diffused light over the dial and pointer.



60 mm. Speedometer

Nemag movement also for lightweight motor cycles. Strap or handle-bar fixing. Variety of dial colourings to choose from.

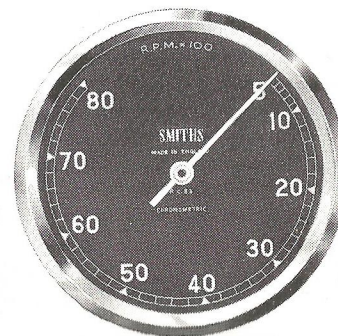
60 mm. Revolution Indicators

Revolution Indicators to match the 60 mm. speedometer are available. Maximum revolutions per minute, ratio and rotation available in any combination of the following:

MAX. R.P.M. 10,000 12,000 16,000

RATIO 2:1 4:1 4:1

ROTATION Clockwise or anti-clockwise.



3" Revolution Indicators

Chronometric movement.

Black dial, white figures and pointer, chrome bezel.

Right angle drive can be built in. A maximum hand may be incorporated if required.

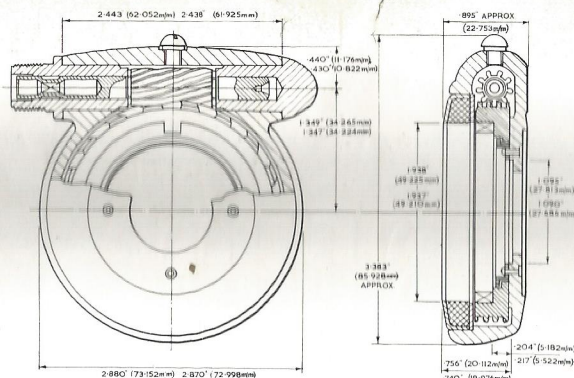
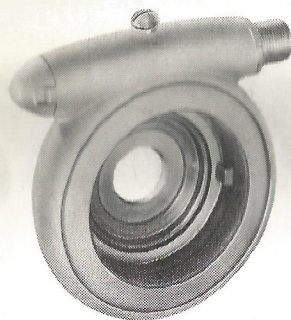
Maximum revolutions per minute, ratio and rotation available in any combination of the following:

MAX. R.P.M. 8,000 9,000 10,000 12,000

RATIO 2:1 4:1 4:1 4:1

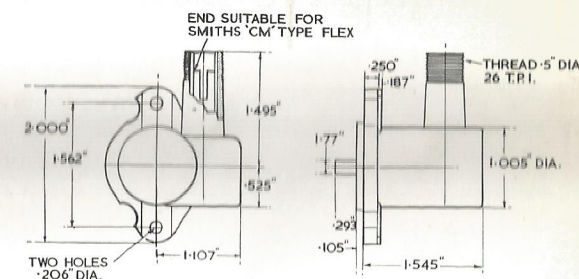
ROTATION Clockwise or anti-clockwise

All Smiths motor cycle speedometers are available to register either miles or kilometers per hour.



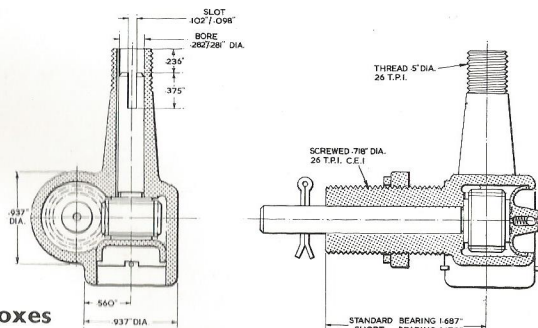
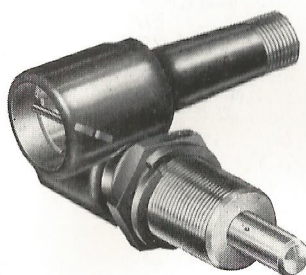
Gear Box Code No. BG.5331 & BG.5333 Series (Replacing 52283/50-88, BG.5101 & BG.5103 Series)

This hub gear box has a thicker body section than those in the BG. 5303 Series (Previously 52283/1-49 Series) and uses the larger felt seal. It can be used where the hub is slotted to provide the necessary engagement or where other provision can be arranged. Clockwise or anti-clockwise input. Ratios: 1:1 & 2:1
 Suitable Flexible Drive DF. 1110/20 (Black PVC) or DF. 1110/24 (Grey PVC)



Gear Box Code No. BG. 1508 Series (Replacing 70549 Series)

These gear boxes reverse the rotation of the shaft to which they are attached. The rotation is determined by looking immediately on to the end of the engine spindle with which the gear box or flexible drive is engaged. Plain phosphor bronze bearings. Ratios 1:1 and 2:1.
 Suitable Flexible Drive DF. 1111/15 (Black PVC) or DF. 1111/12 (Grey PVC)



Brake Drum Fitting Gear Boxes

Basic Code

BG.2504 Series	(Replacing 34159 Series)	Short Reach.	Right Hand Gears
BG.2511 Series	(Replacing 70458 Series)	Long Reach.	Left Hand Gears
BG.2500 Series	(Replacing 25224 Series)	Long Reach.	Right Hand Gears
BG.2510 Series	(Replacing 70458 Series)	Short Reach.	Left Hand Gears

Ratios of 5:12.
 8:12.

Boxes available for either external gear ring drive or for internal brake-drum fitting, with left or right hand gears to maintain clockwise output. Suitable Flexible Drive for these right angle gear boxes: DF. 1111/15 (Black PVC) or DF. 1111/12 (Grey PVC)



FLEX COMPLETE DF. 1111/15 (Black PVC) INNER DI. 1111/00 OUTER DO. 1111/09
 DF. 1111/12 (Grey PVC) DI. 1111/00 DO. 1111/08
DRIVING END **INSTRUMENT END**



FLEX COMPLETE DF. 1110/20 (Black PVC) INNER DI. 1124/00 OUTER DO. 1110/20
 DF. 1110/24 (Grey PVC) DI. 1124/00 DO. 1110/24

The nominal length of a flexible drive is measured between points 'A' and 'B'

THREE WHEELERS, "BUBBLE" CARS, INVALID CHAIRS

Make	Model & Description	Speedometer		Rev Indicator	Flexible Drive ‡		Gear Box	Gear Box Pinion	Gear Ring	Speedometer Bracket	K.L.G. Sparking Plugs	Petro-Flex
		Miles	Kilos		Complete	Length						
BOND	G 2/3 Seater Tourer	SN.4352/01			DF.1111/00	8'6"					F.75	
	G 2/3 Seater Coupe	SN.4352/01			DF.1111/00	8'6"					F.75	
	G 4 Seater Saloon	SN.4352/01			DF.1111/00	8'6"					F.75	
INVACAR	Mk.12 Invalid Carriage	SN.3170/25			DF.1111/00	8'4"	BG. 2507/07	41-280-118-00	31-812-303-01			
SCOOTACAR	TS 3 Wheeler (Standard)	SN.3170/15			DF.1111/02	6'6"					F.75	
	TS 3 Wheeler (De Luxe)	SN.3170/05			DF.1111/02	6'9½"					F.75	
TIPPEN	Delta Invalid Carriage	SN.3170/33			DF.1111/15	8'0"	BG. 2507/09				F.80	

SMITHS

MOTOR ACCESSORY DIVISION

HEAD OFFICE
CRICKLEWOOD WORKS,
LONDON, N.W.2.

Telephone : Gladstone 3333

SALES AND SERVICE
50, OXGATE LANE,
LONDON, N.W.2.

Telephone : Gladstone 8030

Telegrams : Speedofac, London. Telex 22671.

Printed in England by R. Aircraft Press Ltd., N.W.2. July, 1962. Ref. No. S.1012/5