

SMITHS MOTOR CYCLE EQUIPMENT

1965

THREE-WHEELERS, "BUBBLE" CARS, INVALID CARRIAGES—see back cover

SMITHS

Motor Cycle Equipment — 1965

MAKE	MODEL & DESCRIPTION	SPEEDOMETER		REV. INDICATOR	FLEXIBLE DRIVE (A)		GEARBOX	VARIOUS
		MILES	KILOS		COMPLETE	LENGTH		
A.J.S.	14 CSR Sapphire Ninety 250 cc	SSM.2001/02	SSM.2001/03	RSM.3003/00 (E)	DF.9110/00	5'2"	BG.5330/857	
	16 Sceptre 350 cc }	SSM.3002/00A	SSM.3002/01A		DF.9110/00	5'5"	BG.5330/257	
	18 Statesman 500 cc }				DF.9111/03 (E)	2'8"	BG.1508/05 (E)	
	31 Swift 650 cc }							
	31 CSR Hurricane 650 cc }							
	33 CS 745 cc {	SSM.3001/00A	SSM.3001/01A	RSM.3003/00 (E)	DF.9110/00	5'5"	BG.5330/257	
				DF.9111/03 (E)	2'8"	BG.1508/05 (E)		
	16 C 350 cc }	SSM.3001/00A	SSM.3001/01A	RSM.3003/00 (E)	DF.9110/00	5'7½"	BG.5330/1067	
	18 CS Southerner Scrambler 500 cc }				DF.9111/03 (E)	2'8"	BG.1508/05 (E)	
AMBASSADOR	3 Star TS	SN.3170/46			DF.1111/15	3'2"		BULB 6 VOLT 4.0-621-085-11
	Super 'S' TS Twin	SC.3303/42			DF.1111/15	3'2"		FIXING BRACKET 31-674-109-01
ARIEL	Pixie Moped 50 cc	SSM.1100/04	SSM.1100/05		DF.7231/00	2'3"	BG.5351/00	TRIP RESET 41-148-203-10
	Leader TS Twin 250 cc	SSM.5003/00A (C)	SSM.5003/01A (C)		DF.9111/02	3'1"		
	Arrow 200 TS Twin (Standard) 199 cc }	SSM.2001/00	SSM.2001/03		DF.9111/02	3'1"		
	Arrow Super TS Twin (Sports) 250 cc }							
BOND	P3 Scooter (Electric Starter) 147 cc	SN.3170/14			DF.1111/02	3'8"		

A.	See Chart for separate Inner and Outer Drives.	G.	
B.		H.	
C.	Trip Speedometer	J.	
D.		K.	
E.	Optional	L.	
F.		M.	

MAKE	MODEL & DESCRIPTION	SPEEDOMETER		REV. INDICATOR	FLEXIBLE DRIVE (A)		GEAR BOX	VARIOUS
		MILES	KILOS		COMPLETE	LENGTH		
B.S.A.	B.1. Scooter) B.2. Scooter)	SN.3170/18	SN.3153/88		DF.1106/14	4'8½"		
	B.1.S. Scooter) B.2.S. Scooter)	SN.3170/17	SN.3153/87		DF.1106/14	4'8½"		
	K.1. Beagle 75 cc)	SSM.1100/00	SSM.1100/01		DF.7231/00	2'3"	BG.5346/421	
	C.15 Star 250 cc) D7 Star 175 cc)	SSM.2001/00	SSM.2001/03		DF.9110/00	4'10½"	BG.5330/847	
(B) {	C.15 Trials & Cat.) C.15 Starfire Roadster) C.15 Starfire Scrambles) B.40 Enduro Star)	SSM.5001/03A(C)			DF.9110/00	5'1"	BG.5330/247	TRIP RESET 41-148-203-10
	SS.80 250 cc	SSM.2001/02	SSM.2001/03		DF.9110/00	4'10½"	BG.5330/847	
	SS.90 350 cc B.40 350 cc)	SSM.2001/02	SSM.2001/03 SSM.2001/05 (F)		DF.9110/00	4'10½"	BG.5330/247	
(B) {	A.50 Star) A.65 Star) A.50 Royal Star) A.65 Royal Star)	SSM. 4001/00A (C)			DF.9110/02	3'4"		TRIP RESET 41-118-125-79
(B) {	A.50 Cyclone) A.65 Spitfire Hornet)	SSM.5001/03A (C)			DF.9110/02	3'4"		TRIP RESET 41-148-203-10
(B) {	A.65 Thunderbolt Rocket) A.65 Lightning Rocket)	SSM.5001/03A (C)			DF.9110/02	3'8"		TRIP RESET 41-148-203-10
(B)	A.65 Lightning Rocket			RSM.3003/02A (GE)	DF.9110/00	2'9"		
(B)	A.65 Lightning Rocket			RSM.3003/04A (HE)	DF.9110/00	2'9"		
(B)	A.65 Lightning Rocket			RSM.3003/06 (JE)	DF.9110/00	2'9"		
(Excluding U.S.A.)	A.65 Rocket (Lamp Fitting)	SSM.4001/00A (C)	SSM.4001/01A (C)		DF.9110/02	3'4"		TRIP RESET 41-118-125-79
(B)	Daytona Racer 500 cc			RSM.3003/06	N.O.M. (K)			

A.	See Chart for separate Inner and Outer Drives	G.	0-8,000 rpm
B.	U.S.A. only	H.	0-9,000 rpm
C.	Trip Speedometer	J.	0-10,000 rpm
D.		K.	N.O.M. = Not Our Manufacture.
E.	Optional	L.	
F.	As SSM.2001/03 but with Dull Chrome Bezel	M.	

1350

MAKE	MODEL & DESCRIPTION	SPEEDOMETER		REV. INDICATOR	FLEXIBLE DRIVE (A)		GEARBOX	VARIOUS	VARIOUS
		MILES	KILOS		COMPLETE	LENGTH			
COTTON	Vulcan 197 cc	SN.3170/02	SN.3170/03	RN.1104/02	DF.1111/15	3'0"	BG.2504/01	GEAR RING 31-812-110	PINION 31-813-120 TRIP RESET 41-118-125-52
	Herald 250 cc) Double Gloster 250 cc) Continental 250 cc) Continental Deluxe 250 cc) Corsair 250 cc)	SN.3170/02	SN.3170/03		DF.1111/15	3'6"			
	Conquest 250 cc	SSM.4001/00A (C)			DF.9111/00	4'6"			
	Trials 250 cc	SN.3170/14			DF.1111/15	3'0"			
	Telstar Racer 250 cc				DF.1111/15	3'8"			
	Messenger 325 cc	SN.3170/02	SN.3170/03		DF.1111/15	3'6"			
	D.K.R. (8 Volt) " " "	Capella Scooter 175 cc) Capella Scooter 200 cc)	SN.3171/01		DF.1110/00	3'1"			
	D.K.R. (12 Volt) " " "	Capella Scooter 175 cc) Capella Scooter 200 cc)	SN.3171/00		DF.1110/00	3'1"			
	D.M.W.	Deemster KS 250 cc) Deemster ES 250 cc)	SC.3303/41		DF.1111/15	3'2"			
		MK 9 TS	SN.3170/46		DF.1111/15	3'2"			
		MK 17 Trials	SC.1101/02		DF.1110/20	5'0"			
		250 Sports TS Twin Dolomite 250 cc)	SC.3303/42		DF.1111/15	3'2"			
		Hornet Racer 250 cc			DF.1111/15	2'9"			
								(L)	
								(K)	
								(K)	
								(M)	
								(M)	
								(L)	

A.	See Chart for separate Inner and Outer Drives	G.	
B.		H.	
C.	Trip Speedometer	J.	
D.	Angle Drive (Instrument End)	K.	Tank Unit FT.5786/05 also required for Deluxe Models
E.		L.	Mounting Ring MS.1003/00 also required.
F.		M.	Fixing Bracket 31-674-109-01 also required

MAKE	MODEL & DESCRIPTION	SPEEDOMETER		REV. INDICATOR	FLEXIBLE DRIVE (A)		GEARBOX	VARIOUS	
		MILES	KILOS		COMPLETE	LENGTH			
ENFIELD	Turbo Twin	250 cc)	SSM.2001/02	SSM.2001/03	RSM.2001/00 (E)	DF.9111/00	3'4"	BG.5330/847 BG.1508/04 BG.5331/247 BG.5331/247 BG.5331/247 BG.5331/247 BG.5331/247 BG.5331/247 BG.5331/247 BG.1506/01 BG.1507/03 BG.5331/227 BG.5330/847 BG.5330/247 BG.5330/1047	TRIP RESET 41-118-125-79 A/V MOUNTING RING MS.1003/00
	Turbo Twin Sports	250 cc)							
	Crusader Super 5	250 cc)	SSM.2001/00	SSM.2001/03		DF.9111/00	4'5"		
	Crusader Sports	250 cc)							
	Continental	250 cc)				DF.9111/00	3'7"		
	Continental GT	250 cc)							
	Bullet	350 cc)	SC.1304/04	SC.1304/06		DF.1110/21	4'4"		
	Clipper	250 cc)							
	Olympic	250 cc)	SC.1304/04	SC.1304/06		DF.1110/30	4'9"		
	Clipper Airflow	250 cc							
	Trials	250 cc	SSM.3002/00			DF.9110/00	4'6"		
	I.S.D.T.	250 cc	SSM.4001/00 (C)	SSM.4001/01 (C)		DF.9110/00	4'5"		
		Interceptor (U.K. Model)	736 cc	SSM.3002/00		SSM.3002/01	DF.9110/00		
(B)	Interceptor	736 cc	SSM.3002/00	SSM.3002/01		DF.9110/00	4'10"		
(B)	Interceptor	736 cc			RSM.3004/02 (E)	DF.9111/00	3'7"		
	Racer	250 cc			RN.1102/00	DF.1111/15	2'10"		
EXCELSIOR	U.14 T.S.	150 cc	SSM.2001/00			DF.9110/00	4'5½"		
FRANCIS & BARNETT.	87 Falcon	199 cc	SSM.2001/02			DF.9110/00	4'8"		
	88 Fulmar	150 cc)	SN.3170/42			DF.1110/24	4'0"		
	90 Fulmar Sports	150 cc)							
	89 Cruiser Twin	250 cc	SSM.2001/00		DF.9111/00	3'8"			
	91 Cruiser Sports Twin	250 cc	SSM.2001/02		DF.9111/00	3'4"			
	92 Trials TS		SSM.2001/00		DF.9110/00	4'6"			

A.	See Chart for separate Inner and Outer Drives	G.	
B.	U.S.A. only	H.	
C.	Trip Speedometer	J.	
D.		K.	
E.	Optional	L.	
F.		M.	

MAKE	MODEL & DESCRIPTION	SPEEDOMETER		REV. INDICATOR	FLEXIBLE DRIVE (A)		GEARBOX	VARIOUS	VARIOUS
		MILES	KILOS		COMPLETE	LENGTH			
INVACAR (GREEVES)	20 TE Trials 197 cc) 20 TE Trials 250 cc) 24 TFS Trials 250 cc)	SSM.2001/00			DF.9111/00	5'0"	BG.2504/01	GEAR RING 31-812-110	G/B PINION 31-813-125
(B) {	20 TE Trials) 24 TE Trials) 24 TFS Trials)	SSM.5002/00 (CK)			DF.9111/00	5'0"	BG.2504/01	GEAR RING 31-812-110	G/B PINION 31-813-125
(B) {	24 MD 250 cc) 24 MDS 250 cc)	SSM.5002/00 (CK)			DF.9111/00	5'0"	BG.2504/01	GEAR RING 31-812-110	G/B PINION 31-813-125
	20 DC 248 cc) 25 DC 250 cc) 25 DCX 250 cc) 25 DD 250 cc) 32 DC 325 cc) 32 DCX 325 cc) 32 DD 325 cc) Silverstone Racer 250 cc	SSM.2001/00	SSM.2001/03		DF.9111/00	4'8"	BG.2504/01	GEAR RING 31-812-110	G/B PINION 31-813-120
				RN.1104/05	DF.1111/15	2'2"	BG.1507/03 BG.2410/00 (D)		
JAMES	SC1 Scooter 150 cc	SN.3170/47			DF.1110/24	3'0"	BG.5330/027		
	LI Comet 100 cc	SSM.2001/00			DF.9110/00	4'7"	BG.5330/847		
	L20 199 cc) L20 S 199 cc)	SSM.2001/02			DF.9110/00	4'8"	BG.5330/847		
	M15 150 cc	SSM.2001/00			DF.9110/00	4'5"	BG.5330/847		
	M25 S 250 cc	SSM.2001/02			DF.9111/00	3'4"			
	M25 T	SSM.2001/00			DF.9110/00	4'6"	BG.5330/1047		

A.	See Chart for separate Inner and Outer Drives	G.	
B.	U.S.A. only	H.	
C.	Trip Speedometer	J.	
D.	Angle Drive (Instrument End)	K.	Trip Reset 41-118-127-40 also required
E.		L.	
F.		M.	

MAKE	MODEL & DESCRIPTION	SPEEDOMETER		REV. INDICATOR	FLEXIBLE DRIVE (A)		GEARBOX
		MILES	KILOS		COMPLETE	LENGTH	
MATCHLESS	G 2 CSR 250 cc	SSM.2001/02	SSM.2001/03		DF.9110/00	5'2"	BG.5330/857
	G 3 Mercury 350 cc)	SSM.3002/00A	SSM.3002/01A	RSM.3003/00 (E)	DF.9110/00	5'5"	BG.5330/257
	G 12 Majestic 650 cc)				DF.9111/03	2'8"	BG.1508/05
	G 12 CSR Monarch 650 cc)						
	G 80 Major 500 cc)						
	G 12 CSR Monarch 650 cc (SSM.3002/00A	SSM.3002/01A	RSM.3003/00 (E)	DF.9110/00	5'5"	BG.5330/257
					DF.9111/03	2'8"	BG.1508/05
	G 15 745 cc)	SSM.3001/00A	SSM.3001/01A	RSM.3003/00 (E)	DF.9110/00	5'5"	BG.5330/257
	G 15 CSR 745 cc)				DF.9111/03	2'8"	BG.1508/05
	N 15)						
	N 15 CS)						
NORTON	G 3C 350 cc)	SSM.3001/00A	SSM.3001/01A	RSM.3003/00 (E)	DF.9110/00	5'7 $\frac{1}{2}$ "	BG.5330/1067
	G 80 CS 500 cc)				DF.9111/03	2'8"	BG.1508/05
	Jubilee 250 cc)	SSM.2001/02	SSM.2001/03		DF.9110/00	5'2"	BG.5330/857
	Navigator 350 cc)						
	ESB 384 cc)	SSM.2001/02	SSM.2001/03		DF.9110/00	5'2"	BG.5330/257
	E.S. 400 384 cc)						
	88 ss 497 cc)	SSM.3002/00A	SSM.3002/01A	RSM.3003/00 (E)	DF.9110/00	5'7 $\frac{1}{2}$ "	BG.5330/257
	650 ss 647 cc)				DF.9111/03	2'8"	BG.1508/05
	650/99 650 cc)	SSM.3001/00A	SSM.3001/01A	RSM.3003/00 (E)	DF.9110/00	5'9"	BG.5330/257
	Atlas 745 cc)				DF.9111/03	2'8"	BG.1508/05
	50 Mk. II 348 cc)	SSM.3002/00A	SSM.3002/01A	RSM.3003/00 (E)	DF.9110/00	5'5"	BG.5330/257
	ES 2 MK. II 497 cc)				DF.9111/03	2'8"	BG.1508/05

A.	See Chart for separate Inner and Outer Drives	G.	
B.		H.	
C.		J.	
D.		K.	
E.	Optional	L.	
F.		M.	

MAKE	MODEL & DESCRIPTION	SPEEDOMETER		REV. INDICATOR	FLEXIBLE DRIVE (A)		GEARBOX	VARIOUS	VARIOUS
		MILES	KILOS		COMPLETE	LENGTH			
PHELOX & MOORE	35 TS Twin 249 cc	SN.3170/02	SN.3170/03		DF.1111/15	3'1"			
	100 Deluxe 598 cc 120 S 645 cc	SSM.3002/00A	SSM.3002/01A		DF.9111/00	5'6"	BG.2517/00	GEAR RING 31-812-117-01	G/B PINION 31-813-167
PHOENIX SCOOTERS	100 Standard)								
	150 ")								
	175 ")								
	200 ")								
	150 Super Deluxe)								
	175 " ")	SN.3170/10			DF.1106/14	5'3"	BG.5101/11		
	200 " ")								
	S150 Self Start)								
TRIUMPH	S175 " ")								
	S200 " ")								
	Super Deluxe Twin 250 cc	SN.3170/51			DF.1111/15	4'8"			
	Tina Scooter 97 cc	SSM.1100/00	SSM.1100/01		DF.7250/00	2'11 $\frac{1}{2}$ "			
	T20 Tiger Cub 200 cc	SSM.2001/00	SSM.2001/03		DF.9110/00	4'10"	BG.5330/847		
	T20 SH Tiger Cub 200 cc)								
	T20 SS 200 cc)	SSM.2001/00	SSM.2001/03		DF.9110/00	4'10"	BG.5330/247		
	TR 20 Trials Cub 200 cc)			RSM.2002/00 (E)	DF.9158/00	2'10 $\frac{1}{2}$ "			(K)
	T20 Scrambles 200 cc)								
	Tigress Single TS1 175 cc)	SN.3170/18	SN.3170/58		DF.1106/14	4'8 $\frac{1}{2}$ "			
	Tigress Twin TW2 250 cc)								
	3TA Twenty One 348 cc)	SSM.5002/00A (C)	SSM.5002/01A (C)		DF.9110/00	4'10"	BG.5330/887	TRIP RESET 41-118-127-72	
	5TA Speed Twin 490 cc)								
	T90 Tiger Sports 348 cc)	SSM.5001/00A (C)	SSM.5001/01A (C)		DF.9110/00	4'10"	BG.5330/287	TRIP RESET 41-148-203-10	
	T100 SS Tiger Sports 490 cc)								
	T100 SC Tiger Sports 490 cc)								
	TR6 SS Trophy 649 cc)	SSM.5001/00A (C)	SSM.5001/01A (C)		DF.9106/01	3'4 $\frac{1}{2}$ "		TRIP RESET	
	T120 Bonneville 649 cc)			RSM.3001/02A (E)	DF.9158/00	2'10 $\frac{1}{2}$ "		41-148-203-10	(K)
	6T Thunderbird 649 cc	SSM.5002/00A (C)	SSM.5002/01A (C)		DF.9106/01	3'8"		TRIP RESET 41-118-127-72	

A.	See Chart for separate Inner and Outer Drives	G.	
B.		H.	
C.	Trip Speedometer	J.	
D.		K.	Inner Flex End 31-371-398-10 and Flex Washer 31-523-101 also required.
E.	Optional	L.	
F.		M.	

MAKE	MODEL & DESCRIPTION	SPEEDOMETER		REV. INDICATOR	FLEXIBLE DRIVE (A)		GEARBOX	VARIOUS
		MILES	KILOS		COMPLETE	LENGTH		
VELOCE	Viceroy Scooter 248 cc	SN.3170/32			DF.1111/17	5'7"		
	LE Mk. III 192 cc)	SSM.2001/00	SSM.2001/03		DF.9111/01	2'9"		
	LE Vogue 192 cc)							
	Viper 349 cc)							
	Viper Clubman 349 cc)	SSM.4001/00A (C)	SSM.4001/01A (C)	RSM.3003/03 (E)	DF.9110/00	5'3"	BG.5303/11 BG.1507/02 (E)	TRIP RESET 41-118-125-37
	Scrambler 349 cc)				DF.9111/00 (E)	3'0"		
	MSS 499 cc)							
	Venom 499 cc)							
	Venom Clubman 499 cc)							
	Endurance 499 cc)							
	Scrambler 499 cc)							
	Venom Thruxton 499 cc (SSM.5001/00A (C)	SSM.5001/01A (C)	RSM.3003/03 (E)	DF.9110/00 DF.9111/00 (E)	5'3" 3'0"	BG.5303/11 BG.1507/02 (E)	TRIP RESET 41-148-203-10

A.	See Chart for separate Inner and Outer Drives	G.	
B.		H.	
C.	Trip Speedometer	J.	
D.		K.	
E.	Optional	L.	
F.		M.	

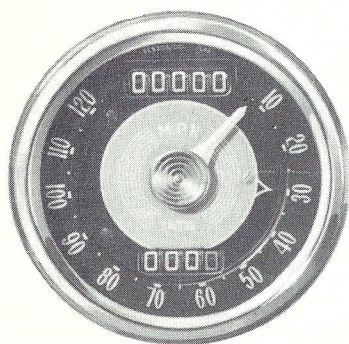
FLEXIBLE DRIVE CHART					
Flexible Drive (Complete)	Inner Flexible Drive (Only)	Outer Flexible Drive (Only)	Flexible Drive (Complete)	Inner Flexible Drive (Only)	Outer Flexible Drive (Only)
DF.1106/14	DI.1124/00	DO.1106/14	DF.7231/00	(Non Detachable)	
DF.1110/00	DI.1110/00	DO.1110/00	DF.7250/00	(Non Detachable)	
DF.1110/20	DI.1124/00	DO.1110/20	DF.9106/01	DI.1124/05	DO.9106/01
DF.1110/21	DI.1124/00	DO.1110/21	DF.9110/00	DI.1124/05	DO.9110/00
DF.1110/24	DI.1124/00	DO.1110/24	DF.9110/02	DI.1124/05	DO.9110/02
DF.1110/30	DI.1124/00	DO.1110/30	DF.9111/00	DI.1124/06	DO.9111/00
DF.1111/00	DI.1110/02	DO.1111/00	DF.9111/01	DI.1124/06	DO.9111/01
DF.1111/02	DI.1110/02	DO.1111/02	DF.9111/02	DI.1124/06	DO.9111/02
DF.1111/15	DI.1111/00	DO.1111/09	DF.9111/03	DI.1124/06	DO.9111/03
DF.1111/17	DI.1111/00	DO.1111/11	DF.9158/00	DI.1124/07	DO.9158/00

The above chart shows the code numbers of the separate inner and outer flexible drives which form the complete flexible drives listed in the specification section of this booklet.

SMITHS *Motor Cycle Equipment*

Illustrated on these pages is a representative range of the most popular types of motor cycle equipment manufactured by Smiths.

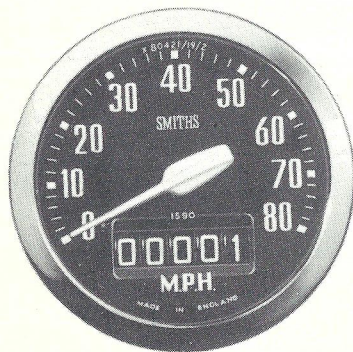
Note: All Smiths motor cycle speedometers are available to register either miles or kilometers per hour.



Speedometer 3" Chronometric Type

The movement is contained in a heavy pressed steel case, specially treated internally and externally against rust. The case is finished in black enamel and the screwed-on bezel is polished chromium plate. Also available with flange bezel and cadmium finished case for nacelle or headlamp installation.

Dial black with white figures and available with or without internal illumination.



60 mm. Speedometer

Nemag movement also for lightweight motor cycles. Strap or handle-bar fixing. Variety of dial colourings to choose from.

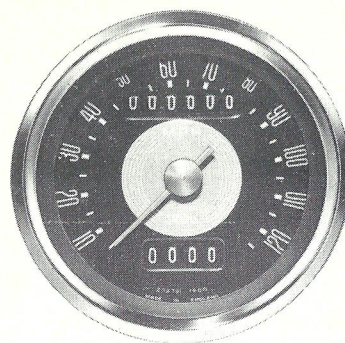
60 mm. Revolution Indicators

Revolution Indicators to match the 60 mm. speedometer are available. Maximum revolutions per minute, ratio and rotation available in any combination of the following:

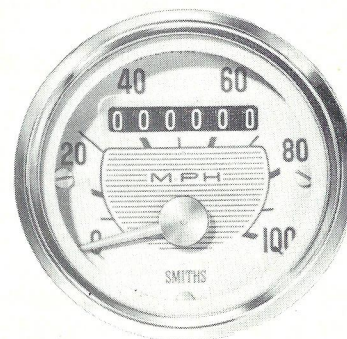
MAX. R.P.M. 10,000 12,000 16,000

RATIO 2:1 4:1 4:1

ROTATION Clockwise or anti-wise.



For full details of matching
60 and 80 mm Revolutions Indicators.
see separate leaflet Ref. No. S.909.



80 mm. 'Shallow' Speedometer.

Magnetic Type with Anti-vibration mounting incorporated in the instrument case and fully geared counter assembly to eliminate 'slip' or 'jumping'.

The movement is contained in a pressed steel case, specially treated internally and externally against rust. White figures, red pointer on duo-grey dial.

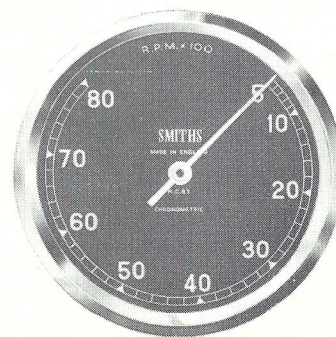
Provision for internal illumination. Suitable Flexible Drive, DF.9110/00 or DF.9111/00 Series.

60 mm. 'Shallow' Speedometer.

Magnetic Type for Lightweight Motor Cycles. Anti-vibration mounting incorporated in the instrument case and fully geared counter assembly, to eliminate 'slip' or 'jumping', are important features of these new instruments.

Light grey dial with dark grey figures and red pointer. Polished Stainless Steel bezel. Internal illumination.

Suitable Flexible Drive, DF.9110/00 or DF.9111/00 Series.



3" Revolution Indicators

Chronometric movement.

Black dial, white figures and pointer, chrome bezel.

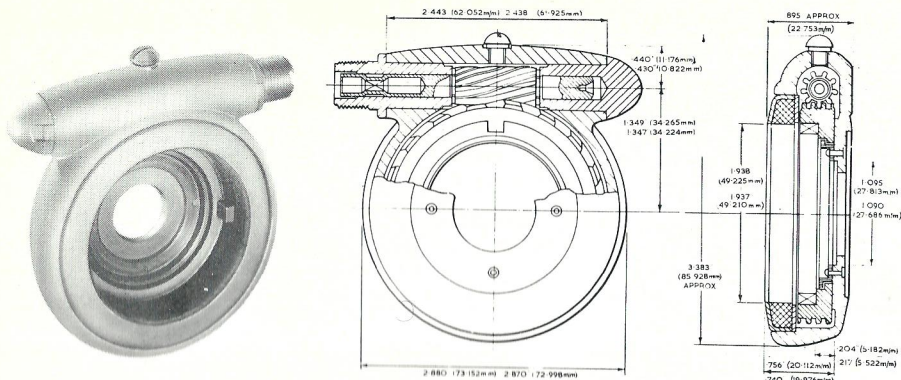
Right angle drive can be built in. A maximum hand may be incorporated if required.

Maximum revolutions per minute, ratio and rotation available in any combination of the following:

MAX. R.P.M. 8,000 9,000 10,000 12,000

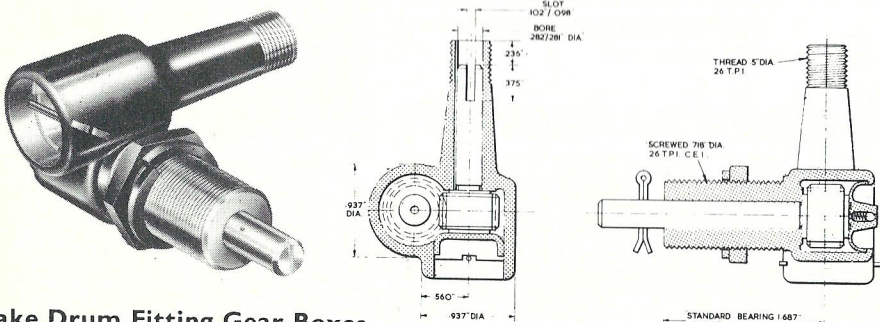
RATIO 2:1 4:1 4:1 4:1

ROTATION Clockwise or anti-clockwise



Gear Box Code No. BG.5330 & BG.5331 Series
(Replacing 52283/50-88, BG.5101 & BG.5103 Series)

This hub gear box has a thicker body section than those in the BG. 5303 Series (Previously 52283 1-49 Series) and uses the larger felt seal. It can be used where the hub is slotted to provide the necessary engagement or where other provision can be arranged. Clockwise or anti-clockwise input. Ratios: 1:1 & 2:1
 Suitable Flexible Drive DF.9110 or DF.9111 Series.

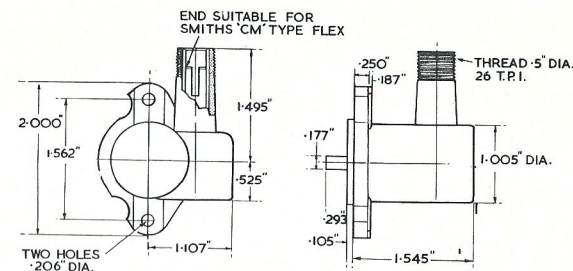
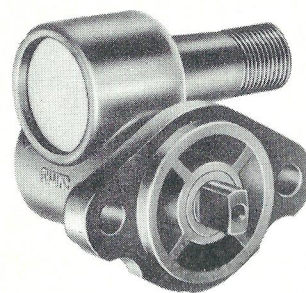


Brake Drum Fitting Gear Boxes

Basic Code

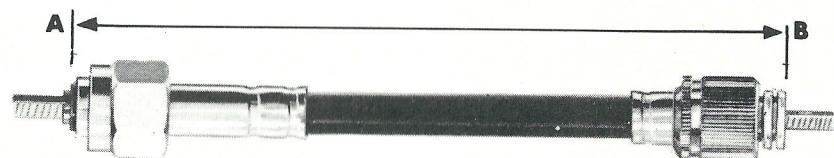
BG.2504 Series	(Replacing 34159 Series)	Short Reach.	Right Hand Gears	Ratios of 5:12. 8:12.
BG.2511 Series	(Replacing 70458 Series)	Long Reach.	Left Hand Gears	
BG.2500 Series	(Replacing 25224 Series)	Long Reach.	Right Hand Gears	
BG.2510 Series	(Replacing 70458 Series)	Short Reach.	Left Hand Gears	

Boxes available for either external gear ring drive or for internal brake-drum fitting, with left or right hand gears to maintain clockwise output.
 Suitable Flexible Drive for these right angle gear boxes: DF. 1111/15 (Black PVC) or DF. 1111.12 (Grey PVC)



Gear Box Code No. BG. 1508 Series (Replacing 70549 Series)

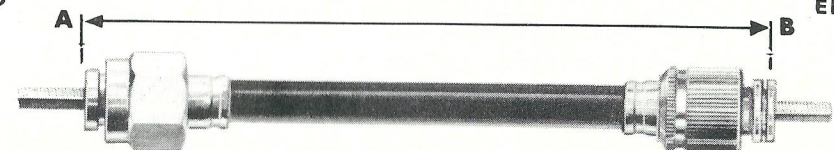
These gear boxes reverse the rotation of the shaft to which they are attached. The rotation is determined by looking immediately on to the end of the engine spindle with which the gear box or flexible drive is engaged.
 Plain phosphor bronze bearings. Ratios 1 : 1 and 2 : 1.
 Suitable Flexible Drive DF. 1111/15 (Black PVC) or DF. 1111.12 (Grey PVC)



FLEX COMPLETE DF.9111/00 **INNER** DI.1124/06 **OUTER** DO.9111/00

DRIVING END

INSTRUMENT END



FLEX COMPLETE DF.9110/00 **INNER** DI.1124/05 **OUTER** DO.9110/00

The nominal length of a flexible drive is measured between points 'A' and 'B'

THREE WHEELERS & INVALID CARRIAGES

MAKE	MODEL & DESCRIPTION	SPEEDOMETER		REV. INDICATOR	FLEXIBLE DRIVE (A)		GEARBOX	GEAR RING	GEARBOX PINION	GEARBOX BRACKET
		MILES	KILOS		COMPLETE	LENGTH				
W & F BARRETT	Invalid Carriage	SN.3170/52			DF.1111/17	3'0"	BG.2507/01	31-812-303-02		
BOND	MK 'G' 2/3 Seater Tourer) MK 'G' 2/3 Seater Coupe) MK 'G' 4 Seater Saloon) MK 'G' Ranger Van) MK 'G' Estate Car)	SN.4352/00 (B) SN.4352/01			DF.1111/00	8'6"				
SCOOTER-CAR (HUNSLET)	TS Deluxe Threewheeler 200 cc	SN.3170/05			DF.1111/02	6'9½"				
	TS Deluxe Twin Threewheeler 250 cc)	SN.3170/15			DF.1111/02	6'6"				
STANLEY ENGINEERING	MK 7 Invalid Carriage	SN.3170/21			DF.1111/00	8'0"	BG.2504/01	31-811-517-02	41-280-118-00	31-354-601-00
TIPPEN	Delta Invalid Carriage	SN.3170/33			DF.1111/15	8'0"	BG.2507/09		41-280-118-00	

A.	See Chart for separate Inner and Outer Drives	G.	
B.	Fitted to Van only	H.	
C.		J.	
D.		K.	
E.		L.	
F.		M.	

SMITHS

MOTOR ACCESSORY DIVISION

The Motor Accessory Division of S. Smith & Sons (England) Ltd

HEAD OFFICE
CRICKLEWOOD WORKS
LONDON NW2

Telephone: Gladstone 3333

SALES AND SERVICE
50 OXGATE LANE
LONDON NW2

Telephone: Gladstone 8030

Telegrams: Speedofac, London. Telex 22671.