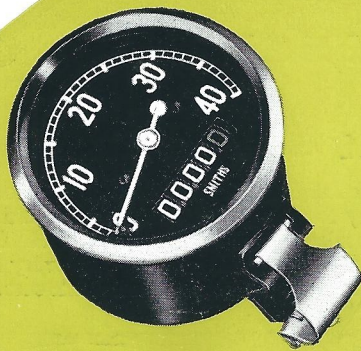


THE **POPULAR** MODEL



THE NEW **DE-LUXE** MODEL



# SMITHS **Cycle Speedometers**

FOR  
MOTOR-ASSISTED  
AND  
PEDAL CYCLES

two **SMITHS** accessories for better cycling



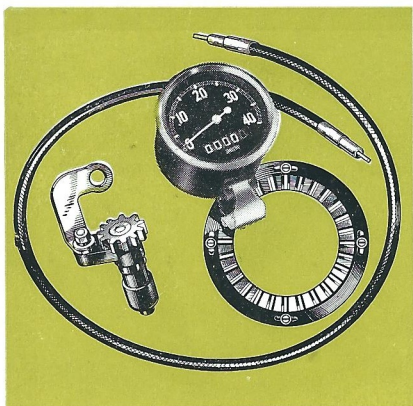
# SMITHS

## CYCLE SPEEDOMETERS



### THE POPULAR MODEL

This instrument has long been famous with cyclists the World over and has been used by many record breakers in keeping to schedule on gruelling runs. It will make your daily journeys much more interesting, providing not only an indication of speed, but the mileage covered on each run. The speedometer embodies the famous SMITHS magnetic movement, giving accurate readings from 0-40 m.p.h. as well as recording distances in 1/10ths of a mile up to 9,999.



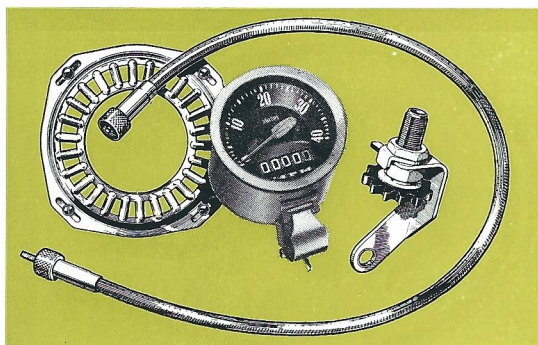
The POPULAR model is supplied with flexible drive, gear ring and pinion set. Full fitting instructions are provided with each instrument and the fitting takes a few minutes only.

Backed by SMITHS six months guarantee, the POPULAR model costs

**£1-18-6**

### THE NEW DE-LUXE MODEL

The DE LUXE model has been introduced particularly for motor assisted bicycles and embodies the experience and knowledge of SMITHS engineers who make speedometers for every British motor cycle and nine out of ten British cars.



The DE LUXE model has a new sturdy SMITHS magnetic movement specially designed to withstand high frequency vibration associated with motorised bicycles. It gives rock-steady readings from 0-40 m.p.h. and records distance in 1/10ths of a mile up to 9,999. The instrument head has an attractive polychromatic grey finish with chromium bezel and black dial with white easy-to-read figures and red pointer. These, and the following features make the new SMITHS DE LUXE SPEEDOMETER an essential accessory for your motor assisted bicycle. It will give you a day-to-day indication of the performance of your machine and, what is perhaps more important, an accurate indication of your petrol consumption.

- New smart flexible drive finished in grey P.V.C.—uncrackable and waterproof.
- New pressed steel drive—simpler to fit—silent running—longer life.

Aided by the simple instructions included with each instrument, the fitting takes only a few minutes and is quite straightforward.

Backed by SMITHS six months guarantee, the new DE LUXE model costs

**£2-9-6**

\*WHEN ORDERING, state whether the drive is for fitting to the right-hand side or left-hand side of the front wheel as seen from the saddle. The standard speedometer is designed for clockwise rotation with the driving gear and pinion bracket fitted on the right-hand side. Where a brake drum or dynamo hub is already on the right side, the speedometer drive will be fitted on the left and an anti-clockwise instrument, together with a left-hand drive pinion bracket, is required.

State also the length of flexible drive required. You need a 28" flex for Roadsters with 28" wheels and raised handlebars; a 26" flex for Light Roadsters with a straight frame and 26" wheels. A 24" flex for Light Roadsters or Sports Models with 26" wheels.

NOTE: These instruments and their drives are designed for use on pedal and power cycles only. They should NOT be fitted to Autocycles, Lightweight Motor cycles or Motor cycles.

SMITHS MOTOR ACCESSORIES LIMITED, CRICKLEWOOD, WORKS, LONDON, N.W.2.

Telephone: Gladstone 3333

Telegrams: Speedofac, London, Telex.

Refs. No. S.677/1. Printed in England, January, 1954.