

SMITHS



EXCHANGE SERVICE

The prices stated in this booklet are those recommended by the makers to be charged on resale by dealers but are not intended to cover extras or delivery charges.

SMITHS

F.R.U.

SCHEME

A JOB FOR THE MAKERS

It will be generally agreed that the people most competent to service and rebuild any product will be those who originally manufactured it. Thus, there are good reasons why we are best qualified to rebuild our motor accessories. The same special skill and the vast resources which have been built up over sixty years are applied as carefully and conscientiously to the servicing and rebuilding of worn or damaged Smiths accessories as in their original manufacture.

There is indeed, no practical difference between a new Smiths motor accessory and its corresponding Smiths Factory Replacement Unit. As a result of continuous development work the design of the unit may have been improved since the original was manufactured and where this is so, such improvements are always incorporated in the Factory Replacement Units.

HOW THE F.R.U. SERVICE OPERATES

The Smiths F.R.U. Scheme operates throughout the United Kingdom and is intended to ensure speedy replacement of any Smiths and British Jaeger instruments and equipment.

Smiths Factory Replacement Units are supplied in exchange against the return of the complete original unit to S.I.L. Motor Accessory Division, Service Department, Oxgate Lane, London N.W.2., or to any S.I.L. Depot or Approved F.R.U. Stockist. Where required, the replacement unit may be supplied in advance of the return of the original unit, thus enabling the removal and re-installation to be carried out at the same time. This latter facility applies to instruments and equipment from most vehicles manufactured in the last five years.

To ensure prompt attention and speedy service, it is important that the following information should be supplied in respect of each transaction.

SERVICE IN ADVANCE

and

ADVANCE REPLACEMENTS UNDER GUARANTEE

The order should be marked in bold letters—"Service in Advance" or "Service in Advance Under Guarantee."

1. Description of unit (e.g. Speedometer—type, trip, or non-trip, etc.).
2. Symptoms of failure.
3. Make, year, model and date of commission of vehicle.
4. Chassis or frame number of vehicle or motor cycle.
5. Where unit was not original equipment on the vehicle, the date of purchase should be stated, together with the name and address of the supplier.

SMITHS

F.R.U.

SCHEME

EXCHANGE SERVICE

The order should be marked in bold letters—" Supply F.R.U."

1. **Description of unit (e.g. Speedometer—type, trip, or non-trip, etc.).**
2. **Symptoms of failure.**
3. **Make, year and model of vehicle.**

CLAIM UNDER GUARANTEE

The order to be marked in bold letters—" Supply Under Guarantee."

1. **Description of unit (e.g. Speedometer—type, trip, or non-trip, etc.).**
2. **Symptoms of failure.**
3. **Make, year and model of vehicle and date of commission.**
4. **Chassis or frame number of vehicle or motor cycle.**
5. **If not original equipment on the vehicle, date unit was purchased and name and address of supplier.**

F.R.U. GUARANTEE

Each Factory Replacement Unit is guaranteed for a period of twelve months from the date of receipt by the user, with the exception of motor cycle, moped and pedal cycle equipment for which the guarantee period is six months. This means that if any such unit suffers from any failure or defect due to faulty workmanship or material and is returned to us during the guarantee period, we will replace or repair the unit free of charge. We do not undertake to dismantle or re-assemble, or bear the cost of dismantling or re-assembling, any such unit on the chassis or vehicle.

The above guarantee takes the place of and excludes all conditions and warranties whether expressed or implied by law, statute or otherwise. In particular, it must be distinctly understood that we cannot accept any liability for direct or indirect damage to persons or property arising in any way from the sale of our goods or from any defect or alleged defect in the goods sold.

PRICES AND TERMS OF BUSINESS

All prices quoted in this publication apply only where the original unit is returned complete. Prices shown are current but are liable to be altered without prior notice.

Where a replacement unit is supplied in advance of the return of the original unit, the F.R.U. price is charged (even if subject to guarantee claim) and increased by 75 per cent if displaced item is not returned within six weeks.

Exceptions to this are clocks and units which incorporate clocks which are charged at new goods price and, subject to the displaced items being returned within six weeks, a credit adjustment will be made.

SMITHS**FRU****SCHEME**

THESE PRICES ARE OPERATIVE FROM 1st OCTOBER, 1965
ALL PREVIOUS PRICES ARE CANCELLED

INDEX TO PRICE LIST

	<i>Page</i>
CLOCKS, CAR AND COACH	9
COUPLINGS, FAN	15
GAUGES, DUAL	12
„ ELECTRICAL	10
„ MECHANICAL	12
GEAR BOXES	14
HEATER EQUIPMENT	16-17
INDICATORS, REVOLUTION	8-9
INSTRUMENTS FOR MOTOR CYCLES, MOPEDS, AND SCOOTERS	13
INSTRUMENTS FOR PEDAL CYCLES	13
JACKS, HYDRAULIC	15
RELAYS, MAGNETIC	11
SPEEDOMETERS, ELECTRICAL	6
„ MAGNETIC	5-6
„ MECHANICAL	7
SWITCHES, PRESSURE	11
„ TEMPERATURE	11
THERMOSTATS	14
TRANSMITTERS, ELECTRICAL GAUGE	10-11
„ „ SPEEDOMETER	6
VALVES, EMISSION CONTROL	15

FOR BRITISH JAEGER ITEMS—SEE PAGE 18

SMITHS

FRU

SCHEME

MAGNETIC SPEEDOMETERS

CIRCULAR (*)

	F.R.U. Symbol	Retail Price	Nett Trade Price	Illus. No.
2½" Non-Trip	MSN.2	47/-	35/3	1
3" Non-Trip	MSN.3	62/-	46/6	1
3" Trip	MST.3	67/-	50/3	2
4" Non-Trip	MSN.4	67/-	50/3	1
4" Trip	MST.4	73/-	54/9	2
4½", 5" and 5½" Non-Trip	MSN.5	70/-	52/6	1
4½", 5" and 5½" Trip	MST.5	81/-	60/9	2
2½" drum type speed reading is obsolete and is replaced by pointer type and flexible drive.	(Special inclusive price).			3

SQUARE (†)

3½" Trip	MST.4	73/-	54/9	4
4½" Non-Trip	MSN.5	70/-	52/6	5
4½" Trip	MST.5	81/-	60/9	4

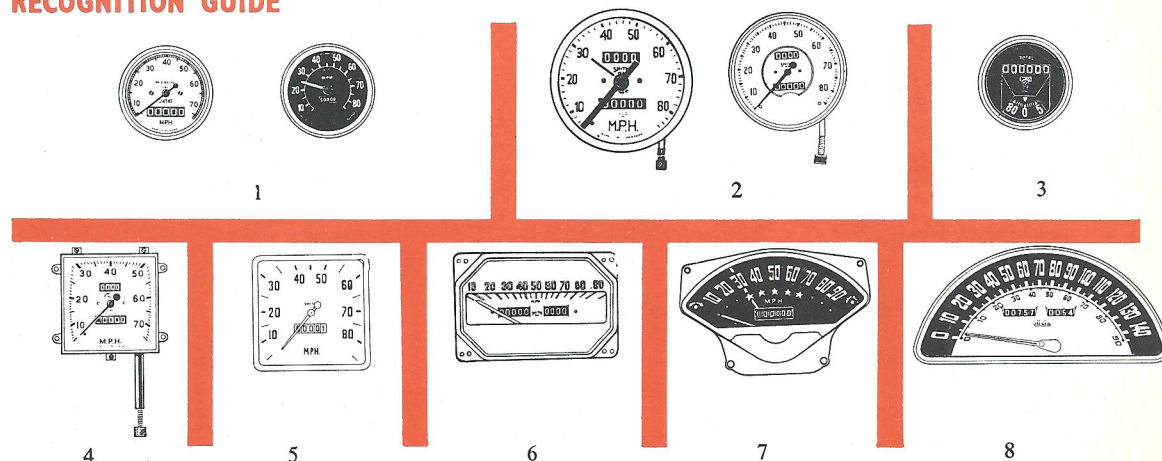
RECTANGULAR (†)

5½" Trip	MST.5	81/-	60/9	6
-----------------	-------	------	------	---

SEMI-CIRCULAR OR CRESCENT (†)

6" Non-Trip	MSN.6	73/-	54/9	7
8" Trip	MST.8	92/-	69/-	8

RECOGNITION GUIDE



(*) Dimensions refer to approximate overall diameter.

(†) Dimensions refer to approximate horizontal measurements of Scale.

N.B. Prices refer to speedometers only. If integral gauge or clock requires replacing, the appropriate symbol should be added, e.g. MSN.5 + PM.

MAGNETIC SPEEDOMETERS

IRREGULAR SHAPE (†)							F.R.U. Symbol	Retail Price	Nett Trade Price	Illus. No.
Non-Trip	MSN.7	81/-	60/9	9
Trip	MST.7	92/-	69/-	10

CIRCULAR AND SQUARE "T" TYPE (with semi-open or open dial centre) (*) (†)

4" and 5" Circular and Square Non-Trip	ATSN	142/-	106/6	11
4" Circular Trip	ATST	157/6	118/2	—
5" Square Trip	ATST	157/6	118/2	12
5" Circular Trip	ATSTC	175/-	131/3	—

RIBBON TYPE (†)

Non-Trip	RSN.7	110/-	82/6	—
Trip	RST.7	121/-	90/9	13

ELECTRICAL SPEEDOMETERS

ELECTROMAG INDICATORS (SE Prefix)

Circular, without Odometer	EMCLC	180/-	135/-	14
Square, without Odometer	EMSLC	195/-	146/3	15
Circular, with Odometer	EMCWC	195/-	146/3	16
Square, with Odometer	EMSWC	220/-	165/-	17

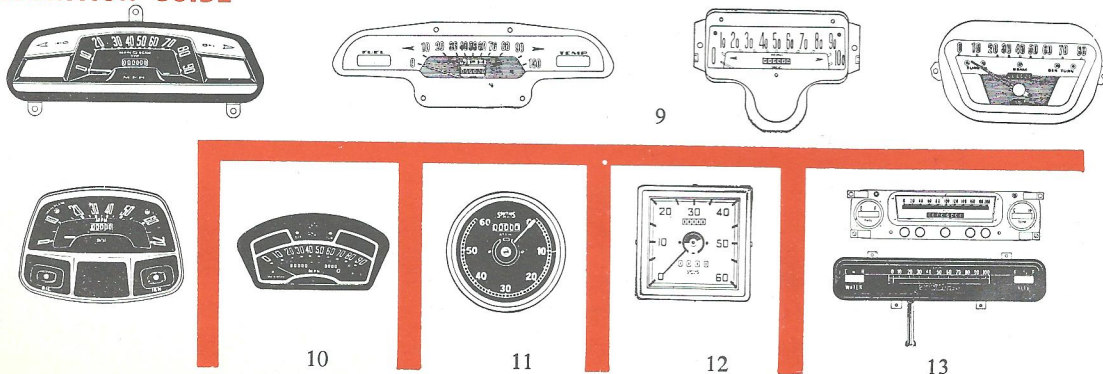
ELECTROMAG TRANSMITTERS (ST Prefix)

Flange Mounted	EMTF	107/-	80/3	18
Flex Driven	EMTFD	107/-	80/3	19
Snout Mounted	EMTS	107/-	80/3	20
Snout Mounted and Geared	EMTSG	110/-	82/6	21

SPEED INDICATORS (No Counters) (*) (†)

3" Circular	SE.3	88/-	66/-	22
Generator	GR	105/-	78/9	23
4" Circular (SMC1/Series)	SEM.4	286/-	214/6	24
Generator (RSG Prefix)	GRM	205/-	153/9	25
4 $\frac{5}{8}$ " Square (SMC2/Ser. or SMC6/Ser.)	SEM.5	282/-	211/6	26
Generator (RSG Prefix)	GRM	205/-	153/9	25

RECOGNITION GUIDE



MECHANICAL SPEEDOMETERS

CHRONOMETRIC TYPE (*)

					F.R.U. Symbol	Retail Price	Nett Trade Price	Illus. No.
3" Circular Non-Trip	CSN.3	68/6	51/5	—
3" Circular Trip	CST.3	77/-	57/9	—
5" Circular Trip	CST.5	88/6	66/5	27
6" Circular Trip	CST.6	100/-	75/-	—

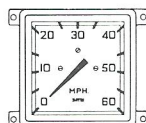
GOVERNOR TYPE (*)

3" Non-Trip	GSN.3	80/-	60/-	28
3" Trip	GST.3	90/-	67/6	—
5" Trip	GST.5	112/-	84/-	29

RECOGNITION GUIDE



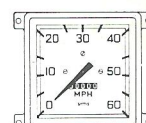
14



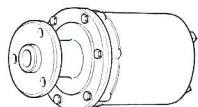
15



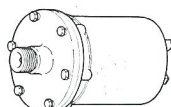
16



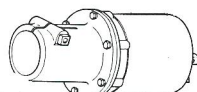
17



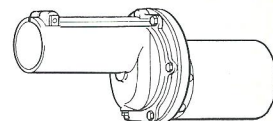
18



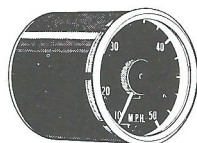
19



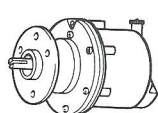
20



21



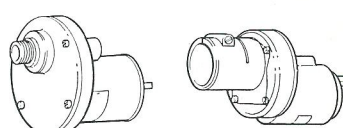
22



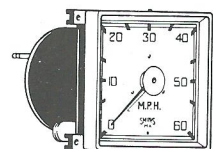
23



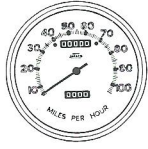
24



25



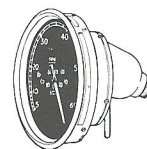
26



27



28



29

(*) Dimensions refer to approximate overall diameter.

(†) Dimensions refer to approximate horizontal measurements of Scale.

N.B. Prices refer to speedometers only. If integral gauge or clock requires replacing, the appropriate symbol should be added, e.g. CST.5 + CLE.2.

REVOLUTION INDICATORS

CIRCULAR MAGNETIC TYPE (*)								F.R.U. Symbol	Retail Price	Nett Trade Price	Illus No.
3"	RCM.3	62/-	46/6	—
4"	RCM.4	67/-	50/3	—
5"	RCM.5	70/6	52/11	30

CIRCULAR " T " TYPE (with Semi-open or Open Dial Centre) (*)

4"	ATRC.4	126/-	94/6	—
5"	ATRC.5	175/-	131/3	31

CIRCULAR CHRONOMETRIC TYPE (*)

3"	RCC.3	85/-	63/9	—
5"	RCC.5	100/-	75/-	—
6"	RCC.6	100/-	75/-	—

CIRCULAR GOVERNOR TYPE (*)

3"	RCG.3	92/-	69/-	--
5"	RCG.5	112/-	84/-	—

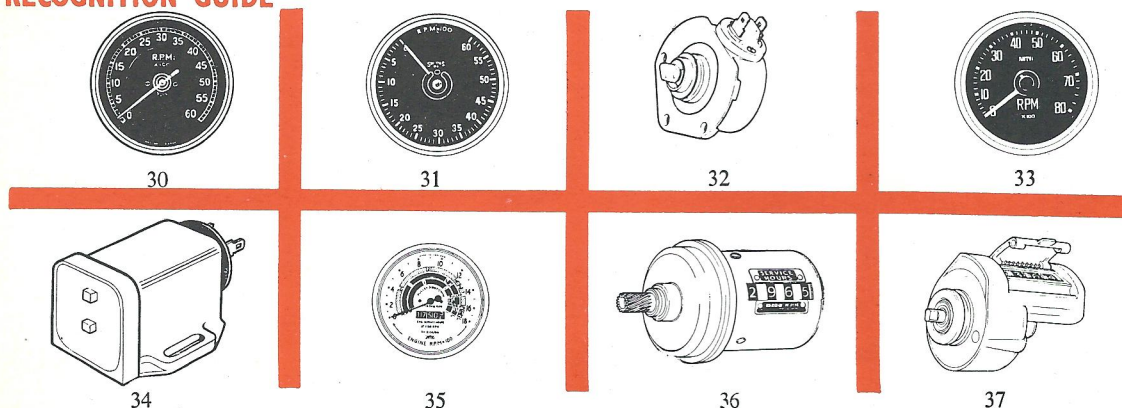
CIRCULAR ELECTRIC TYPE (*)

4" Moving Coil Indicator (RMC Prefix)	RCE.4	286/-	214/6	—
Generator (RSG Prefix)	GRM	205/-	153/9	25
4" Voltmeter Indicator (RV Prefix)	REC.4	85/-	63/9	—
4 $\frac{3}{4}$ " and 5" Voltmeter Indicator (RV Prefix)	REC.5	85/-	63/9	—
Generator (TV Prefix)	GRC	32/-	24/-	32
3" Impulse Tachometer (RVI Prefix)	RLT.3	95/-	71/3	33
4" Impulse Tachometer (RVI Prefix)	RLT.4	100/-	75/-	—
5" Impulse Tachometer (RVI Prefix)	RLT.5	100/-	75/-	—
Impulse Tachometer Pick-up (PUR.1000/00)	TPU.1	18/-	13/6	34

TRACTORMETERS (*)

3" Circular	TRC.3	62/-	46/6	—
3 $\frac{3}{8}$ " and 4" Circular	TRC.4	67/-	50/3	35

RECOGNITION GUIDE



(*) Dimensions refer to approximate overall diameter.

(†) Dimensions refer to approximate horizontal measurements of Scale.

N.B. Prices refer to revolution indicators only. If integral gauge or clock requires replacing, the appropriate symbol should be added, e.g. REC.5 + CLE.2.

REVOLUTION INDICATORS

Hour Counter (ATFC Prefix)	F.R.U. Symbol	Price Retail	Price Nett Trade	No. Illus.
ATFC.183/ Series	HC.1	77/-	57/9	36
ATFC.220/ Series	HC.2	90/-	67/6	37
ATFC.268/ Series	HC.3	90/-	67/6	—

CAR AND COACH CLOCKS

ELECTRIC TYPE

Panel Type (Exposed Dial)	CLE.2	47/-	35/3	39
2" Circular and Rectangular	CLE.2	47/-	35/3	40
2½" Circular	CLE.2	47/-	35/3	—
2½" Square	CLE.2	47/-	35/3	—
3" Circular	CLE.3	48/-	36/-	—
4" Circular	CLE.4	52/-	39/-	—
3" 'Empire' Model (Self Winding) (Repair Service Only)	CLM	Special Quotation		—
Repair and fit fuse to above	CLEF	16/-	12/-	—

SPRING WOUND CLOCKS

Panel Type (Exposed Dial)	CLL.2	59/-	44/3	—
2" Circular	CLL.2	59/-	44/3	—
2½" Square	CLL.2	59/-	44/3	—
3" Circular	CLL.3	64/-	48/-	—
4" Circular	CLL.4	75/-	56/3	—
Parklite Timer	LT	29/-	21/9	38

CHRONOGRAPH CLOCK (Time of Trip)

	No Exchange Service	
	Repair by Quotation	41

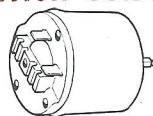
MIRROR CLOCK

Clock only	CLMC	55/-	41/3	42
Mirror only	Supplied as Spares Item			

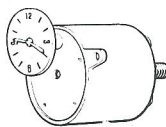
COACH CLOCKS

6" Circular	CLC.6	84/-	63/-	43
7¾" × 5" Barrel Shape	CLC.7	84/-	63/-	44

RECOGNITION GUIDE



38



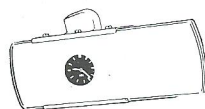
39



40



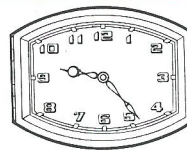
41



42



43



44

ELECTRICAL GAUGES

FUEL GAUGES

	<i>F.R.U. Symbol</i>	<i>Retail Price</i>	<i>Nett Trade Price</i>	<i>Illus. No.</i>
2" Circular and Rectangular	PMC	40/-	30/-	45
2½" Square	PMS	53/-	39/9	--
Panel Type	PM	36/-	27/-	46

FUEL AND OIL LEVEL GAUGES

2" Circular	POC	44/-	33/-	—
Panel Type	POP	38/-	28/6	—

TEMPERATURE INDICATORS

2" Circular and Rectangular	TIC	29/6	22/2	47
Panel Type	TIP	23/6	17/8	48

PRESSURE INDICATORS

2" Circular and Rectangular	PIC	32/-	24/-	—
Panel Type	PIP	27/-	20/3	—

VACUUM INDICATORS

2" Circular	VIC	36/-	27/-	—
--------------------	-----	------	------	---

AMMETERS

2" Circular or Rectangular	AMC	18/6	13/11	—
Panel Type	AMP	13/6	10/2	—
2½" Square	AMS	25/6	39/5	—

ELECTRICAL TRANSMITTERS

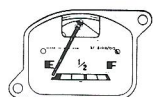
FUEL TANK ATTACHMENTS

Single Wire Type	TA1	43/-	32/3	49
Special Types	TA2	120/-	90/-	—
Oil Sump Unit	OSU	43/-	32/3	—

RECOGNITION GUIDE



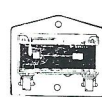
45



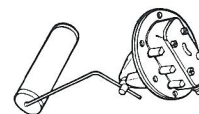
46



47



48



49

ELECTRICAL TRANSMITTERS

TEMPERATURE TRANSMITTERS

	<i>F.R.U. Symbol</i>	<i>Retail Price</i>	<i>Nett Trade Price</i>	<i>Illus. No.</i>
TT Prefix all types	THT	18/-	13/6	50

TEMPERATURE SWITCHES

TS Prefix all types	TU1	18/-	13/6	51
SJC Prefix all types	TU2	36/-	27/-	52

PRESSURE AND VACUUM TRANSMITTERS

PT and VT Prefix all types	PVT	44/-	33/-	53
-----------------------------------	-----	------	------	----

PRESSURE OPERATED SWITCHES

DPS Prefix	DOU	18/-	13/6	—
PS Prefix 1XXX/Series	OU	18/-	13/6	54
PS Prefix 3XXX/Series	OU1	40/-	30/-	55
PS Prefix 4XXX/Series	OU1	40/-	30/-	55
PS Prefix 5XXX/Series	ZOU	11/6	8/8	56

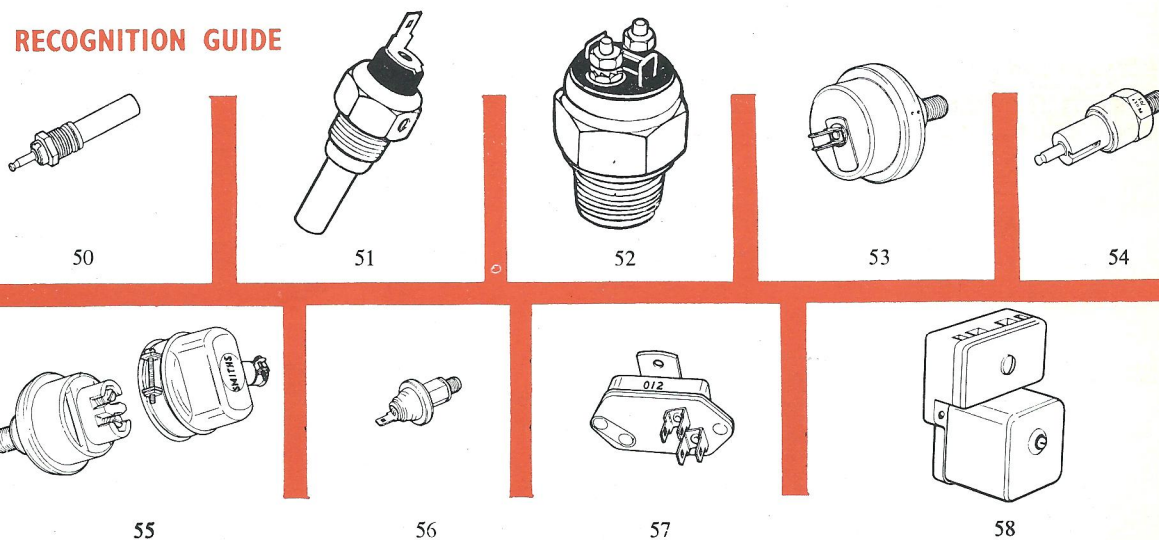
VOLTAGE STABILISER

BR Prefix	VR	13/6	10/2	57
------------------	----	------	------	----

MAGNETIC RELAY

RDA or RDJ	MR	35/-	26/3	58
-------------------	----	------	------	----

RECOGNITION GUIDE



MECHANICAL GAUGES

PRESSURE GAUGES

	F.R.U. Symbol	Retail Price	Nett Trade Price	Illus. No.
Panel Type	PGP	29/6	22/2	—
2" Circular and Rectangular	PGC	38/—	28/6	—
2½" Square	PGS	50/—	37/6	—

VACUUM GAUGES (including Performance and Boost Gauges)

Panel Type	VGP	38/—	28/6	—
2" Circular and Rectangular	VGC	46/6	34/11	—
2½" Square	VGS	58/—	43/6	—

DUAL GAUGES (*)

Pressure/Pressure 2" Circular	PPGC	68/6	51/5	—
Pressure/Vacuum 2" Circular	PVGC	77/—	57/9	—
Pressure/Temperature 2" Circular	PTGC	77/—	57/9	59
Temperature/Temperature 2" Circular	TTGC	85/—	63/9	—
Pressure/Pressure 2½" Square	PPGS	91/6	68/8	—
Pressure/Vacuum 2½" Square	PVGS	100/—	75/—	—
Pressure/Temperature 2½" Square	PTGS	100/—	75/—	—
Temperature/Temperature 2½" Square	TTGS	108/—	81/—	—
Vacuum/Temperature 2½" Square	VTGS	108/—	81/—	—
Pressure/Temperature 3" Circular	PTWL	81/—	60/9	60

FUEL GAUGES (Direct Reading Type)

3¼" Diameter Flange	FGDS	36/—	27/—	61
4¾" Diameter Flange	FGDL	44/—	33/—	—

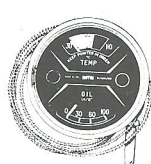
TEMPERATURE GAUGES (*)

Panel Type	TGP	38/—	28/6	—
2" Circular and Rectangular	TGC	46/6	34/11	62
2½" Square	TGS	58/—	43/6	—

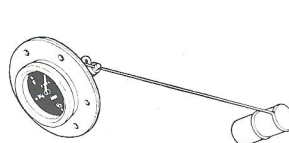
RECOGNITION GUIDE



59



60



61



62

(*) These prices apply to instruments up to 7' capillary. Additional length charged at 1/- per foot or part of a foot. (9d. nett trade).

INSTRUMENTS FOR MOTORCYCLES MOPEDS AND SCOOTERS

CHRONOMETRIC SPEEDOMETERS

	<i>F.R.U. Symbol</i>	<i>Retail Price</i>	<i>Nett Trade Price</i>	<i>Illus. No.</i>
3" Circular Non-Trip... ..	SFMN3	55/-	41/3	—
3" Circular Trip	SFMT3	60/-	45/-	63
5" Circular Trip	SFMT5	70/-	52/6	—
'D' Shape Non-Trip	SFMD	40/-	30/-	—

CHRONOMETRIC REVOLUTION INDICATOR

3" Circular	RFM3	65/-	48/9	—
--------------------	------	------	------	---

MAGNETIC SPEEDOMETERS

2" and 2½" Circular and Rectangular Non-Trip ...	MCSN2	40/-	30/-	—
3" Diameter Circular Non-Trip	MCSN3	50/-	37/6	—
3" Diameter Circular Trip	MCST3	58/-	43/6	64

MAGNETIC REVOLUTION INDICATORS

2" Diameter Circular... ..	MCR2	40/-	30/-	—
3" Diameter Circular... ..	MCR3	50/-	37/6	65

GOVERNOR SPEEDOMETER

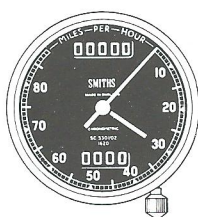
3" Circular Trip	GSMT3	90/-	67/6	—
-------------------------	-------	------	------	---

INSTRUMENTS FOR PEDAL CYCLES

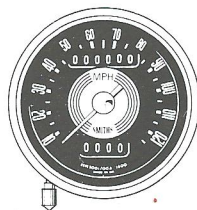
SPEEDOMETERS

Popular Model Non-Trip	MSP	25/-	18/9	66
De Luxe Model Non-Trip	MSPD	33/-	24/9	—

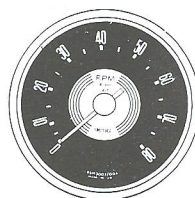
RECOGNITION GUIDE



63



64



65



66

THERMOSTATS

BOLT ON TYPE	F.R.U. Symbol	Retail Price	Nett Trade Price	Illus. No.
29908, 29978, 30030, 30060, 30085, 43274, 43275, 43282, 43284, 43285, 43286, 43332, 43396, 43400, 43428, 43449, 43463, 43467, 43553, 43555, 43580, 43621, 43640	TS.1	48/-	36/-	—

DROP IN TYPE

43570/Series	TS.2	15/-	11/3	—
85023, 85025, 85032, 85035/Series	T.2	13/6	10/2	—
84805, 84823/Series	T.3	36/-	27/-	—
43452, 43497, 43605, 43631, 43655, 43665/Series ...	TS.3	26/-	19/6	—
85305/Series	T.4	20/-	15/-	—
30065, Series (except those listed below under TS.5)	TS.4	30/-	22/6	—
43379, 30065/7/19/20/25/36/37/38/39/40/42/45/ 46/50/51/52, 43517/Series	TS.5	37/-	27/9	—
81015/Series	TS.5	37/-	27/9	—
29936, 29996, 30096, 43402, 43630/Series	T.5	40/-	30/-	—
43530/Series	TS.6	52/-	39/-	—
	TS.7	90/-	67/6	—

GEAR BOXES

AT Prefix	GB.1	17/-	12/9	—
ATA Prefix	GB.7	85/-	63/9	—
BG Prefix				
BG.5337, 5338, 5348/Series	GB.1	17/-	12/9	—
BG.2105, 2406, 2500, 2501, 2504, 2507, 2510, 2511, 2512, 2517, 2519, 5115, 5116, 5117, 5121, 5320, 5322, 5401/Series	GB.2 } GB.2 } GB.2 }	23/-	17/3	—
BG. 1301, 1303, 1304, 1307, 2301, 2401, 2402, 2505, 2514, 2515, 4302, 5100, 5101, 5103, 5110, 5303, 5330, 5331, 5333/Series	GB.3 } GB.3 } GB.3 }	34/-	25/6	—
BG.1506, 1508, 2400, 2509, 4101/Series	GB.4	40/-	30/-	—
BG.1500, 1501, 1507, 2200, 2407, 2408, 2516/Series	GB.5	57/-	42/9	—
BG.1509/Series	GB.6	75/-	56/3	—
BG.1504/Series	GB.7	85/-	63/9	—
BG.1103/Series	GB.8	105/-	78/9	—

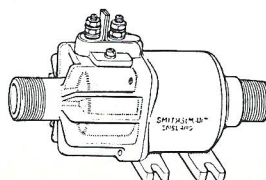
DUAL BOXES

R.325, R.327	DGB.1	75/-	56/3	—
BG.7100/Series	DGB.2	110/-	82/6	—

ELECTRIC GEAR BOXES

BG.6400/Series	GBE	78/-	58/6	67
BG.6403/Series	GBE.1	58/-	43/6	—

RECOGNITION GUIDE



JACKS

JACKALL HYDRAULIC SYSTEMS HAND AND POWER OPERATED

	F.R.U. Symbol	Retail Price	Nett Trade Price	Illus. No.
Distributor Box	JB	90/-	67/6	—
Jacks	JJ	68/-	51/-	—
Pipelines with Junction Boxes	JP	52/6	39/5	—
Pump and Motor Assembly	PAM	265/-	198/9	—
Pump only	PU	145/-	108/9	—
Motor only	MO	120/-	90/-	—
Control Box	MO	120/-	90/-	—

MECHANICAL TYRE PUMPS

Mechanical Tyre Pump	TP	180/-	135/-	—
-----------------------------	----	-------	-------	---

CIGARETTE LIGHTERS

THERMOSTATIC TYPE

Socket only	CGS	Service only	—
Element only	CGE	10/- 7/6	—

MISCELLANEOUS

Instrument shell (mounting plate)	MIS	15/-	11/3	—
--	-----	------	------	---

FAN COUPLINGS

Magnetic Particle, FJU.1005/Series... ..	PFC1	—	405/-	68
Magnetic Particle, FJU.1006, 1008/Series	PFC2	—	915/-	69
Magnetic Particle, FJU.1007, 1009/Series	PFC3	—	855/-	—
Viscous, FJU.3001/Series	VFC1	125/-	93/9	70

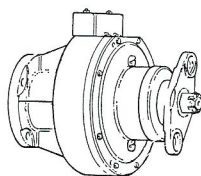
CRANKCASE EMISSION CONTROL VALVE

FVP 2001 Series	EV	18/-	13/6	71
FVP 2003 Series	EV1	12/6	9/5	—

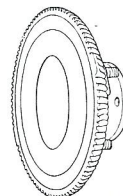
RECOGNITION GUIDE



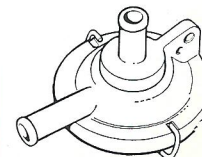
68



69



70



71

HEATER EQUIPMENT

HEATER UNITS

	<i>F.R.U. Symbol</i>	<i>Retail Price</i>	<i>Nett Trade Price</i>	<i>Illus. No.</i>
FHF.2301, 2302; FHR.9303/Series	CH1	85/-	63/9	—
FHF.3102, 3306/Series	CH2	107/-	80/3	—
CHS.620; FHF.3307; FHR.1101, 1301, 1302, 1501, 2204, 2305, 2306, 2307, 2404, 2405, 9408, 9412, 9413/Series	CH3	116/-	87/-	—
CHS.380; FHF.2102, 2201; FHR.2314, 2315/Series	CH4	128/-	96/-	—
CHS.600, 650; FHF.3304; FHR.3416, 3611, 3616/ Series	CH5	152/-	114/-	—
FHF.3401, 3402, 3500, 3501, 3503, 3504, 3505, 3506, 3507, 3508, 3509, 3514, 3515, 3516, 3517, 3518, 3522, 3526, 3529, 3530, 3531, 3534; FHR. 2325, 2329, 2408, 2427, 2450, 2451, 2525, 3302, 3502/Series	CH6	163/-	122/3	—
CHS.710; FHF.3512, 3525, 3551, 3552; FHR.2225, 2312, 2401, 2403, 2425, 2428, 2429, 2453, 2457, 2480, 3411, 3412, 3451, 3452, 3454, 3455, 3493, 3494, 3612, 3692, 4325, 4410, 4411, 4525/Series ...	CH7	179/-	134/3	—
CHS.110/3, 850, 880, 920, 1000, 1702, 1801; FHF. 2404, 4401, 4402, 5505; FHR.2202, 2309, 2310, 2402, 2406, 2430, 2455, 2602, 3301, 3303, 3401, 3402, 3404, 3491, 3492, 4401, 4491, 4495, 5301, 5501/Series	CH8	200/-	150/-	—
CHS.750, 1390, 1490; FHF.3523, 4301; FHR.4405, 4408, 4409, 4412, 4612, 4901, 5302, 5502, 9304/ Series	CH9	245/-	183/9	—
FHF.3524, 5301, 5501, 5901; FHR.3501, 4301, 4414, 5401, 7501, 8601/Series	CH10	280/-	210/-	—

RADIATORS

Circular 4 and 5 Airway	CHC1	45/-	33/9	—
Circular 6 Airway	CHC2	55/-	41/3	—
Circular 7 Airway	CHC3	75/-	56/3	—
Circular 9 Airway	CHC4	81/-	60/9	—
Rectangular and Square. Small	CHR1	55/-	41/3	—
Rectangular and Square. Medium and Divided ...	CHR2	68/-	51/-	—
Rectangular and Square. Large	CHR3	95/-	71/3	—
Rectangular and Square. Extra Large	CHR4	168/-	126/-	—
Rectangular and Square. Extra Large Divided ...	CHR5	140/-	105/-	—

MOTORS

Motor only	CHM	59/-	44/3	72
Motor with Mounting Plate	CHMM	63/-	47/3	73

HEATER EQUIPMENT

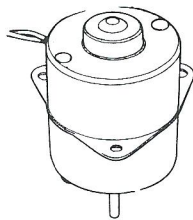
BLOWERS

	F.R.U. Symbol	Retail Price	Nett Trade Price	Illus. No.
Blowers, Plastic Casing	CHBP	92/-	69/-	74
Blowers, Die-cast Casing	CHBD	105/-	78/9	74
Blowers, Special FHB.3392/Series	CHBS	74/-	55/6	—
Blowers, Demister, FHB.1351/Series	CHD	115/-	86/3	—
Blower, Special, FHB.1302/Series; FHB.5392/ Series; FHB.5492/Series	CHB1	150/-	112/6	—

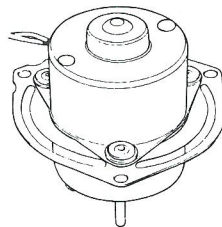
MISCELLANEOUS ITEMS

Runner	CHMR	6/-	4/6	75
Water Control Valve... ..	CHV	16/-	12/-	76
Thermostatic Water Control Valve, FHW.1903/ Series	CHTV1	50/-	37/6	77
Thermostatic Water Control Valve, FHW.1905/ Series	CHTV2	79/-	59/3	—
Water and Air Operating Mechanism	CHV1	26/-	19/6	78
Water Pump with Fittings	CHP	60/-	45/-	79
Water Pump less Fittings	ZCHP	55/-	41/3	—
Radiator and Air Valve Assembly	CV1	126/-	94/6	80

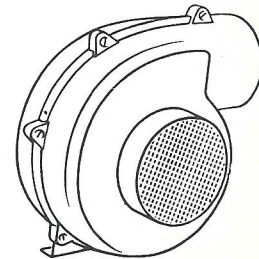
RECOGNITION GUIDE



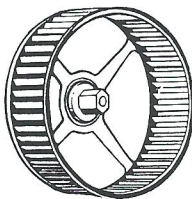
72



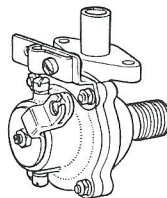
73



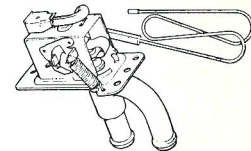
74



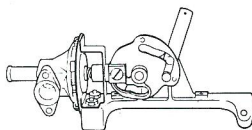
75



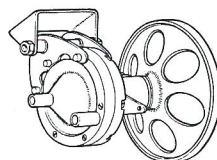
76



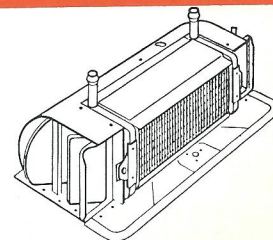
77



78



79



80

INDEX TO PRICE LIST FOR BRITISH JAEGER FACTORY REPLACEMENT UNITS

	<i>Page</i>
CLOCKS, CAR AND COACH	22-23
GAUGES, ELECTRICAL	20-21
„ MECHANICAL	21-22
INDICATORS, REVOLUTION	20
SPEEDOMETERS, MAGNETIC	19
„ MECHANICAL	20

MAGNETIC SPEEDOMETERS

CIRCULAR (*)	F.R.U. Symbol	Retail Price	Nett Trade Price	Illus. No.
2½" Non-Trip	J/MSN.2	47/-	35/3	—
3" Non-Trip	J/MSN.3	62/-	46/6	—
3" Trip	J/MST.3	67/-	50/3	J1
4" Non-Trip	J/MSN.4	67/-	50/3	—
4" Trip	J/MST.4	73/-	54/9	—
4⅝", 5" and 5½" Non-Trip	J/MSN.5	70/-	52/6	—
4⅝", 5" and 5½" Trip	J/MST.5	81/-	60/9	—

SQUARE (†)

3⅝" Trip	J/MST.4	73/-	54/9	J2
4¼" Non-Trip	J/MSN.5	70/-	52/6	—
4¼" Trip	J/MST.5	81/-	60/9	J2

RECTANGULAR (†)

5½" Trip	J/MST.5	81/-	60/9	J3
-----------------	---------	------	------	----

SEMI-CIRCULAR OR CRESCENT (†)

8" Trip	J/MST.8	92/-	69/-	J4
----------------	---------	------	------	----

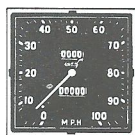
IRREGULAR SHAPE (†)

Trip	J/MST.7	92/-	69/-	—
-------------	---------	------	------	---

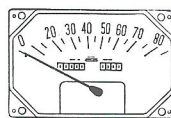
RECOGNITION GUIDE



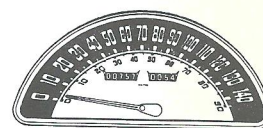
J1



J2



J3



J4

(*) Dimensions refer to approximate overall diameter.

(†) Dimensions refer to approximate horizontal measurements of Scale.

N.B. Prices refer to speedometers and revolution indicators only. If integral gauge or clock requires replacing, the appropriate symbol should be added, e.g. J/MSN.5 + J/PM.

MECHANICAL SPEEDOMETERS

CHRONOMETRIC TYPE (*)	F.R.U. Symbol	Retail Price	Nett Trade Price	Illus. No.
3" Circular Non-Trip... ..	J/CSN.3	68/6	51/5	—
3" Circular Trip	J/CST.3	77/-	57/9	—
5" Circular Trip	J/CST.5	88/6	66/5	J5
6" Circular Trip	J/CST.6	100/-	75/-	—
Instruments fitted with the special Thirtelite Warning Movement, Extra	J/TW	20/-	15/-	—

REVOLUTION INDICATORS

CIRCULAR MAGNETIC TYPE (*)

3"	J/RCM.3	62/-	46/6	—
4"	J/RCM.4	67/-	50/3	—
5"	J/RCM.5	70/6	52/11	J6

CIRCULAR CHRONOMETRIC TYPE

3"	J/RCC.3.	85/-	63/9	—
5"	J/RCC.5	100/-	75/-	J7
6"	J/RCC.6	100/-	75/-	—

ELECTRICAL GAUGES

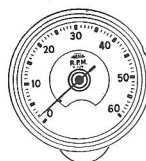
FUEL GAUGES

2" Circular and Rectangular	J/PMC	40/-	30/-	J8
2½" Square	J/PMS	53/-	39/9	—
Panel Type	J/PM	36/-	27/-	J9

RECOGNITION GUIDE



J5



J6



J7

(*) Dimensions refer to approximate overall diameter.

(†) Dimensions refer to approximate horizontal measurements of Scale.

N.B. Prices refer to speedometers and revolution indicators only. If integral gauge or clock requires replacing, the appropriate symbol should be added e.g. J/CST.5 + J/PM.

ELECTRICAL GAUGES

FUEL AND OIL LEVEL GAUGES

	<i>F.R.U. Symbol</i>	<i>Retail Price</i>	<i>Nett Trade Price</i>	<i>Illus. No.</i>
2" Circular	J/POC	44/-	33/-	—
Panel Type	J/POP	38/-	28/6	—

TEMPERATURE INDICATORS

2" Circular and Rectangular	J/TIC	29/6	22/2	J10
Panel Type	J/TIP	23/6	17/8	J11

MECHANICAL GAUGES

TEMPERATURE GAUGES (*)

Panel Type	J/TGP	38/-	28/6	—
2" Circular and Rectangular	J/TGC	46/6	34/11	J12
2½" Square	J/TGS	58/-	43/6	—

PRESSURE GAUGES

Panel Type	J/PGP	29/6	22/2	—
2" Circular and Rectangular	J/PGC	38/-	28/6	J13
2½" Square	J/PGS	50/-	37/6	—

RECOGNITION GUIDE



J8



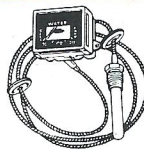
J9



J10



J11



J12



J13

(*) These prices apply to instruments up to 7' capillary. Additional length charged at 1/- per foot or part of a foot. (9d. nett trade).

MECHANICAL GAUGES

VACUUM GAUGES

(including Performance Gauges)

	<i>F.R.U. Symbol</i>	<i>Retail Price</i>	<i>Nett Trade Price</i>	<i>Illus. No.</i>
Panel Type	J/VGP	38/-	28/6	—
2" Circular and Rectangular	J/VGC	46/6	34/11	J14
2½" Square	J/VGS	58/-	43/6	—

DUAL GAUGES (*)

Pressure/Pressure 2" Circular	J/PPGC	68/6	51/5	—
Pressure/Vacuum 2" Circular	J/PVGC	77/-	57/9	—
Pressure/Temperature 2" Circular	J/PTGC	77/-	57/9	J15
Temperature/Temperature 2" Circular	J/TTGC	85/-	63/9	—

FUEL TANK ATTACHMENTS

Single Wire Type	J/TA1	43/-	32/3	J16
Special Types	J/TA2	120/-	90/-	—
Oil Sump Unit	J/OSU	43/-	32/3	—

CAR AND COACH CLOCKS

ELECTRIC TYPE

Panel Type (Exposed Dial)	J/CLE.2	47/-	35/3	—
2" Circular and Rectangular	J/CLE.2	47/-	35/3	J17
2" Rectangular with front reset knob	J/CLE.2	47/-	35/3	—
2½" Circular	J/CLE.2	47/-	35/3	—
2½" Square	J/CLE.2	47/-	35/3	J18
3" Circular	J/CLE.3	48/-	36/-	—

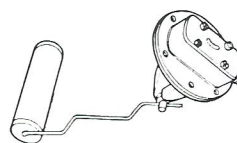
RECOGNITION GUIDE



J14



J15



J16



J17



J18



J19

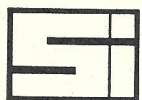
(*) These prices apply to instruments up to 7' capillary. Additional length charged at 1/- per foot or part of a foot. (9d. nett trade).

CAR AND COACH CLOCKS

SPRING WOUND CLOCKS							<i>F.R.U. Symbol</i>	<i>Retail Price</i>	<i>Nett Trade Price</i>	<i>Illus. No.</i>
Panel Type (Exposed Dial)	J/CLL.2	59/-	44/3	—
2" Circular	J/CLL.2	59/-	44/3	—
2½" Square	J/CLL.2	59/-	44/3	—
3" Circular	J/CLL.3	64/-	48/-	—
4" Circular	J/CLL.4	75/-	56/3	—

CHRONOGRAPH (Time of Trip)

	No Exchange Service Repair by Quotation	J19
--	--	-----



SMITHS INDUSTRIES LIMITED

MOTOR ACCESSORY DIVISION

SALES & SERVICE · OXGATE LANE · LONDON · NW2

Tel: Gladstone 8030 Grams: Speedofac, London Telex: 22671

DEPOTS

BRISTOL: 7 Bath Road, 4 Phone: Bristol 70314/5

GLASGOW: 123-145 North Street, C.3 Phone: Glasgow Central 3972

MANCHESTER: 780 Chester Road, Stretford Phone: Manchester Longford 2414

BELFAST: 19 Ormeau Avenue Phone: Belfast 32911