

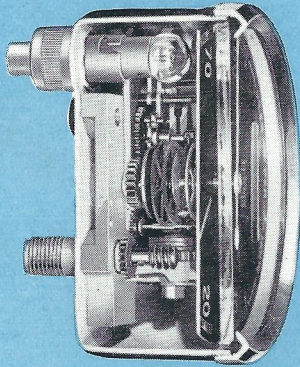
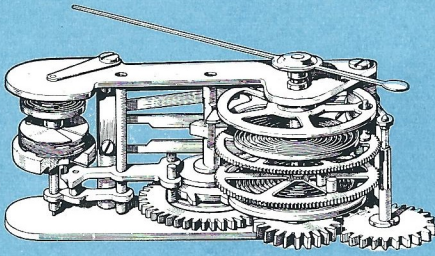
SMITHS

MOTOR CYCLE

SPEEDOMETERS

SMITHS MOTOR ACCESSORIES LTD., CRICKLEWOOD, LONDON, N.W.2.

SMITHS CHRONOMETRIC INSTRUMENTS



The Smiths Motor Cycle Instruments embody the famous chronometric movement—the time principle of accurate speed measurement, which is effected by counting the number of revolutions which the road wheel makes in a specified time.

The driving wheel of the mechanism actuates a lever escapement similar in construction to that of a watch. This escapement controls the speed of rotation of a camshaft which causes the recording mechanism to be engaged with the drive at regular intervals. During these intervals the revolutions of the road wheel are counted and registered by the pointer in terms of miles or kilometres per hour. In principle this method of speed measurement is comparable with that of timing by stop-watch over given distance. It is accurate and the pointer remains fixed between the intervals, so that it is easy to read at a glance at all speeds.

The Smiths Chronometric Mechanism is a fine example of precision engineering and is robust and dependable in service.

CHRONOMETRIC SPEEDOMETER

This speedometer is factory fitted as standard equipment by all British Motor Cycle manufacturers.

The Chronometric movement is contained in a heavy pressed steel case, specially treated internally and externally against rust. The case is finished in black enamel, and the screwed-on bezel is polished chromium plated.

White lettering is employed on a black dial, giving a particularly clear reading. The instruments that are calibrated in miles per hour have a bold line at 30 m.p.h. position.

An important feature is the built-in miniature lamp, which provides diffused illumination of the dial with no leakage of naked light to distract the rider's attention from the road.

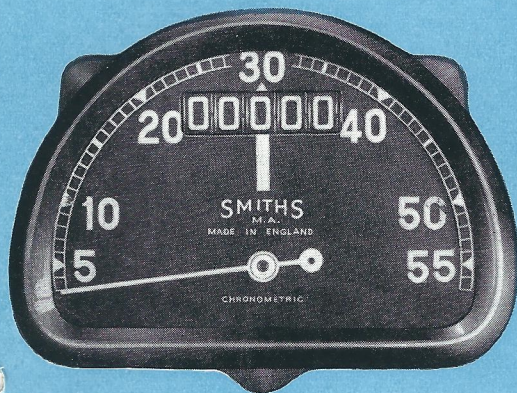
The speedometer is supplied to register either miles or kilometres per hour, with total distance and trip recorder.



When ordering please state make, model, ye

CHRONOMETRIC SPEEDOMETER

for Lightweight Motor Cycles



The Chronometric movement is similar to that fitted to larger types and is characterised by the same standard of accuracy and reliability. Finished in rust-proofed, black enamelled case with clear white figures on a black dial, it has a bold line at the 30 m.p.h. position.

It is distinctive in design, compact and light in weight and fitted with internal illumination which provides a soft diffused light over the dial and pointer for night driving. The speedometer is supplied to register either miles or kilometres with total distance recorder.

This instrument is available with calibrations up to 55 m.p.h. (or 90 kilometres per hour).

CHRONOMETRIC REVOLUTION INDICATOR

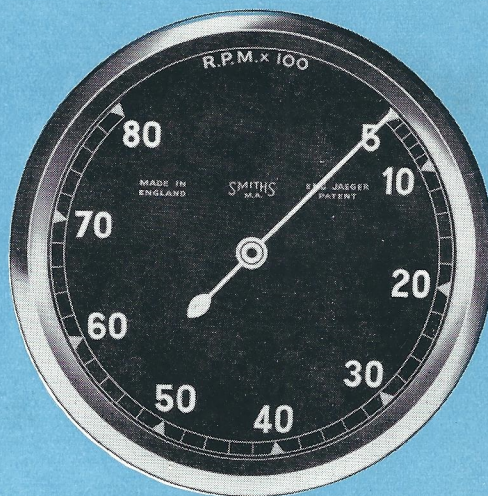
An accurate and reliable revolution indicator is invaluable to the rider who wants maximum performance from the modern high-efficiency motor-cycle. The Smiths Chronometric Revolution Indicator is uniform in size and style with the Smiths Speedometer. The chronometric movement ensures a steady, accurate reading at all speeds and enables the rider to make best use of his gears as well as being a guide to engine conditions.

The standard calibration is 8,000 r.p.m., (higher calibrations can be supplied to special order), the drive being taken through a flexible drive and right-angle gear box intended for half engine speed operation.

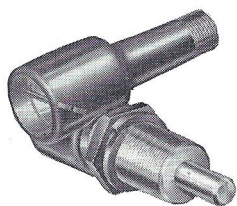
Attractively finished with chromium-plated rim and black dial with bold white markings, this instrument is fully waterproofed, and its robust construction ensures absolute reliability under the most arduous conditions.

Supplied complete with flexible drive, right-angle gearbox and mounting bracket.

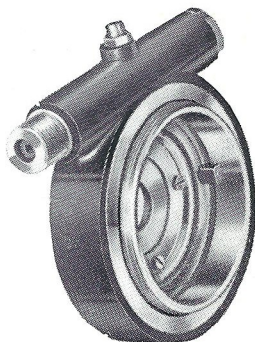
A special ball bearing type right angle gear box can also be supplied.



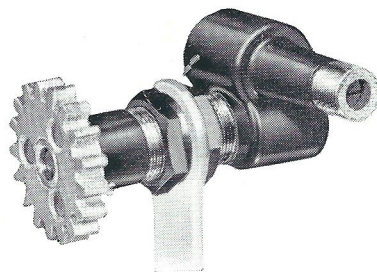
SMITHS SPEEDOMETER GEAR BOXES



For BRAKE DRUM DRIVE



For HUB DRIVE



For EXTERNAL DRIVE

SMITHS SPEEDOMETER FLEXIBLE DRIVES



INNER
52108/1

COMPLETE
53395

OUTER
53398



INNER
52108/2

COMPLETE
52091/5

OUTER
57772

Smiths speedometers are fitted as standard equipment by all British motor cycle manufacturers. When replacement flexible drives are required for these, be certain to use only Smiths genuine flexible drives. A comprehensive recommendation list (No. S.178/3) giving the correct type of flexible drive for all British motor cycles is available free on request.

No. S.186/2. Printed in England, May 1953

SMITHS MOTOR ACCESSORIES LTD
CRICKLEWOOD WORKS, LONDON, N.W.2
TELEPHONE: GLADSTONE 3333 TELEGRAMS: SPEEDOFAC, LONDON, TELEX

DEPOTS:

BIRMINGHAM:
33, COX STREET,
LIVERY STREET
Tel.: B'ham Central 6963

LONDON: 179-185, GREAT PORTLAND STREET, W.1 Tel.: LAngham 5811

MANCHESTER:
780, CHESTER ROAD,
STRETFORD
Tel.: Manchester Longford 2414

GLASGOW:
153-155, BOTHWELL ST.,
C.2
Tel.: Glasgow Central 3972

BELFAST:
19, ORMEAU AVENUE
Tel.: Belfast 26406

THE MOTOR ACCESSORY DIVISION OF S. SMITH & SONS (ENGLAND) LIMITED

SMITHS

SMITHS MOTOR ACCESSORIES LTD.

PRICE LIST FOR MOTOR CYCLE SPEEDOMETERS

MOTOR CYCLE SPEEDOMETERS, SPARES AND FLEXIBLE DRIVES

	£ s. d.	Carriage and Packing s. d.
NOTE : Speedometer complete with Drive should be ordered direct from the Motor Cycle Manufacturers.	5 0 0	2 0
Chronometric Speedometer, Head only. Trip model	3 10 0	1 6
Standard Bracket for above	3 0	4
Bulb Holder complete	5 0	6
Bottom Drive Governor Speedometer Head only Trip model	4 0 0	1 6
Flexible Drives complete under 4'	17 6	1 3
Flexible Drives complete 4' and over	1 2 6	1 3
Inner Flexible Drives or Outer Casings only. Under 4'	8 9	11
Inner Flexible Drives or Outer Casings only. 4' and over	11 3	11
Gear Box (less pinion) Internal Brake Drum type	1 6 0	11
Steel Pinion for above	4 6	4
Gear Box, Self-contained Unit. Hub fitting	2 2 6	11
Gear Box, External type complete with pinion	1 17 6	11
Pinion for External type Gear Box	4 6	4
Gear Ring	13 0	9

LIGHTWEIGHT MOTOR CYCLE & AUTOCYCLE SPEEDOMETERS, SPARES & FLEXIBLE DRIVES

"D" Shaped Chronometric Speedometer complete with Drive, for Lightweight Motor Cycles and Auto-Cycles should be ordered direct from the Motor Cycle or Auto-Cycle Manufacturers.	4 0 0	2 0
Speedometer Head (Non-Trip) only	2 15 0	1 6
Speedometer Head Bracket	3 0	4
Bulb Holder complete	5 0	6
Flexible Drive complete under 4'	17 6	9
Flexible Drive complete 4' and over	1 2 6	9
Inner Flexible Drive or Outer Casing only under 4'	8 9	6
Inner Flexible Drive or Outer Casing only 4' and over	11 3	6
Gear Box complete. External	1 14 6	11
Fibre Pinion (Bushed)	8 9	6
Gear Ring 48, 50 or 54 Teeth	13 0	9

REVOLUTION INDICATORS

Chronometric Revolution Indicator complete with flexible drive and standard type right Angle Gear Box	6 2 6	1 9
Chronometric Revolution Indicator Head only	4 0 0	1 0
Right Angle Gear Box	2 7 6	11
Special Ball Bearing type Right Angle Gear Box	3 5 0	11
Flexible Drive complete under 4'	17 6	1 3
Flexible Drive complete 4' and over	1 2 6	1 3
Inner Flexible Drive or Outer Casing under 4'	8 9	11
Inner Flexible Drive or Outer Casing 4' and over	11 3	11

When ordering please state make, model, year and cubic capacity of motor cycle.

THESE PRICES ARE OPERATIVE FROM 1st FEBRUARY, 1952. ALL PREVIOUS PRICES ARE CANCELLED.