

# SMITHS MOTOR CYCLE EQUIPMENT

*1964*

THREE-WHEELERS, "BUBBLE" CARS, INVALID CARRIAGES — see back cover



# SMITHS

## Motor Cycle Equipment — 1964

MAKE	MODEL & DESCRIPTION	SPEEDOMETER		REV. INDICATOR	FLEXIBLE DRIVE (E)		GEARBOX	GEAR RING	GEARBOX PINION	SPEEDOMETER BRACKET
					COMPLETE	LENGTH				
A.J.S.	7R	349 cc		ATRC.2652N (A)	DF.1111/15	1'10"	BG.1507/00			
	16	350 cc								
	18	500 cc	SSM.3002/00	SSM.3002/01	DF.9110/00	5'7½"	BG.5330/257			
	31	650 cc		RSM.3003/00 (B)	DF.9111/03 (B)	2'8"	BG.1508/05 (B)			
	31 CSR	650 cc								
ARIEL	14 CSR	250 cc	SSM.2001/02	SSM.2001/03	DF.9110/00	5'2"	BG.5330/857			
	16 C	350 cc								
	18 CS		SSM.3001/00	SSM.3001/01	DF.9110/00	5'7½"	BG.5330/1067			
	Pixie		SSM.1100/00		DF.7231/00	2'3"	BG.5351/000			
	Leader	250 cc	SSM.5003/00 (C)	SSM.5003/01 (C)	DF.9111/02	3'1"				
B.S.A.	TS2 Arrow	250 cc	SN.3170/28	SN.3170/29	DF.1111/19	3'1"				
			SSM.2001/00 (D)	SSM.2001/03 (D)	DF.9111/02 (D)	3'1"				
	B1 Scooter		SN.3170/18		DF.1106/14	4'8½"				
	B2 Scooter									
	B1S Scooter		SN.3170/17		DF.1106/14	4'8½"				
	B2S Scooter									
	K1 Beagle	75 cc	SSM.1100/00	SSM.1100/01	DF.7231/00	2'3"	BG.5346/421			
	C 15	250 cc	SSM.2001/00	SSM.2001/03	DF.9110/00	4'10½"	BG.5330/847			
	D 7	175 cc								
	(C15 Trials & Cat C15 Starfire Roadster)		SSM.5001/03 (C)		DF.9110/00	5'1"	BG.5330/247			

(A)	Mounting Ring MS.1001/01 also required	(G)	
(B)	Optional Equipment	(H)	
(C)	Trip Version Speedometer	(J)	
(D)	Introduction of this equipment early 1964	(K)	
(E)	See chart for separate Inner and Outer Drives	(L)	
(F)		(M)	

MAKE	MODEL & DESCRIPTION	SPEEDOMETER		REV. INDICATOR	FLEXIBLE DRIVE (K)		GEARBOX	GEAR RING	GEARBOX PINION	SPEEDOMETER BRACKET
		MILES	KILOS		COMPLETE	LENGTH				
B.S.A. (Cont'd)	(C15 Starfire Scrambles } (B40 Enduro Star }	SSM.5001/03 (B)			DF.9110/00	5'1"	BG.5330/247			
	B40 350 cc } SS80 250 cc } SS90 350 cc }	SSM.2001/02	SSM.2001/03 SSM.2001/05 (C)		DF.9110/00	4'10 $\frac{1}{2}$ "	BG.5330/247			
	A50 Star 500 cc )	SC.3313/00 (B)			DF.1110/20	3'5"				31-674-110-01
	(D) (A50 Star )									
	(D) (A65 Star )									
	(D) (A50 Royal Star )	SSM.4001/00 (B)			DF.9110/02	3'4"				
	(D) (A65 Royal Star )									
	(A) (A50 Cyclone )									
	(A) (A65 Spitfire Hornet )	SSM.5001/03 (B)			DF.9110/02	3'4"				
	(A) A65 Thunderbolt Rocket	SSM.5001/03 (B)			DF.9110/02	3'8"				
COTTON	(D) A65 Rocket (Lampfitting)	SSM.4001/00 (B) SSM.5001/03 (BE)		RSM.3003/02 (E)	DF.9110/02 (E) DF.9110/00 (E)	3'4" 3'8" 2'9"				
	(A) A65 Lighting Rocket	SSM.5001/03 (B)		RSM.3003/02	DF.9110/02 DF.9110/00	3'8" 2'9"				
	Trials 197 cc	SC.1102/06			DF.1111/15	4'6"	BG.2510/00	31-812-110	31-813-120	
	Vulcan 197 cc }									
	Herald 250 cc }									
	Double Gloster 250 cc }									
	Continental 250 cc }	SN.3170/02	SN.3170/03		DF.1111/15	3'6"				
	Continental Deluxe 250 cc }				DF.1111/15 (F)	3'0"				
	Corsair 250 cc }									
	Trials (1 cyl) 250 cc	SN.3170/14			DF.1111/15	3'0"				
D.K.R.	Racer 'Telstar' 250 cc			RN.1104/02 (G)	DF.1111/15	3'8"	BG.1507/03 BG.2410/00 (H)			
	Messenger 325 cc	SC.3303/ 17 (B)	SC.3303/02 (B)		DF.1111/15	3'6"				31-674-109-01
	Capello Scooter } (Kick Start) 175 cc }	SN.3171/01 (J)			DF.1110/00	3'1"	BG.5117/047			

(A) U.S.A. Market only	(G) Mounting Ring MS.1003/00 also required
(B) Trip Version Speedometer	(H) Right Angle Drive
(C) As SSM.2001/03 but with dull Chrome Finish	(J) 8 Volt kick start models
(D) Home and Export Models (excluding U.S.A.)	(K) See Chart for separate Inner and Outer Drives
(E) Optional Equipment	(L)
(F) Vulcan 197cc model only	(M)



MAKE	MODEL & DESCRIPTION	SPEEDOMETER		REV. INDICATOR	FLEXIBLE DRIVE (K)		GEARBOX	GEAR RING	GEARBOX PINION	SPEEDOMETER BRACKET
		MILES	KILOS		COMPLETE	LENGTH				
D.K.R. (Cont'd)	Capello Scooter (Kick Start) 200cc	SN.3171/00 (A)			DF.1110/00	3'1"	BG.5117/047			
(B)	Capello Scooter (Electric Start) 175cc									
	Manx 249cc	SN.3170/16			DF.1110/00	3'0"	BG.5117/047			
D.M.W.	Deemster K.S. 250cc	SC.3303/41 (C)			DF.1111/15	3'2"				31-674-109-01
	Deemster E.S. 250cc									
	Mk.15 Trials	SC.1101/02			DF.1110/20	5'0"				
	15A Trials (American)	SC.5301/14 (C)			DF.1110/20	5'0"	BG.5330/227			
	Dolomite II 250cc	SC.3303/42 (C)			DF.1111/15	3'2"				31-674-109-01
	Dolomite IIA 324cc	SC.3303/09 (C)	SC.3303/12 (C)		DF.1111/15	3'2"				31-674-109-01
	Mk.9	SC.1101/07	SC.1101/09		DF.1111/15	3'2"				31-674-114-01
ENFIELD	Turbo Twin 250cc	SSM.2001/02	SSM.2001/03		DF.9111/00	3'4"				
	Crusader Super 5 250cc									
	Crusader Sports 250cc	SC.1304/04	SC.1304/06		DF.1110/21	4'4"	BG.5331/247			
	Continental 250cc			RC.1302/00 (D)	DF.1111/15 (D)	3'7"	BG.1508/04 (D)			
	Bullett 350cc	SSM.2001/02 (E)	SSM.2001/03 (E)		DF.9110/00 (E)	4'5"	BG.5330/347 (E)			
				RSM.2001/00 (DE)	DF.9111/00 (DE)	3'7"	BG.1508/04 (DE)			
	Clipper 250cc	SC.1304/04	SC.1304/06		DF.1110/21	4'4"	BG.5331/247			
	Clipper Airflow 250cc				DF.1110/30 (F)	4'9"				
	Trials 250cc	SSM.3002/00			DF.9110/00	4'6"	BG.5331/247			
	I.S.D.T. 250cc	SSM.4001/00 (C)	SSM.4001/01		DF.9110/00	4'5"	BG.5331/247			
	(W.D.) 250 & 350cc	SSM.4001/02 (C)			DF.9110/00	4'5"	BG.5331/247			
	Interceptor 692cc (U.K. & U.S.A. Model)	SSM.3002/00			DF.9110/00	4'7"	BG.5331/247			
				RSM.3002/02 (G)	DF.9110/00	4'10" (G)	BG.1506/01 (G)			
					DF.9110/00 (G)	3'7"				
EXCELSIOR (H)	ME.12 Scooter 150cc	SN.3170/13			DF.1110/00	3'0"	BG.5116/047			
(J)	MK.12 Scooter 150cc	SN.3170/10								
	CL4 98cc	SN.3170/02			DF.1110/20	3'9½"	BG.5331/227			
		SSM.2001/00 (L)			DF.9110/00 (L)	3'10"	BG.5331/227			

(A) 12 Volt Electric Start Models	(G) U.S.A. Model only
(B) Tank Unit FT.5786/05 fitted to this model	(H) 12 Volt Electric Start Model
(C) Trip Version Speedometer	(J) 6 Volt kick start model
(D) Optional Equipment	(K) See chart for separate Inner and Outer Flexes
(E) Introduction of the equip. approx April 1964	(L) Introduction of this equip. approx Feb. 1964.
(F) Clipper Airflow Model	(M)

MAKE	MODEL & DESCRIPTION	SPEEDOMETER		REV. INDICATOR	FLEXIBLE DRIVE (G)		GEARBOX	GEAR RING	GEARBOX PINION	SPEEDOMETER BRACKET
		MILES	KILOS		COMPLETE	LENGTH				
EXCELSIOR (Cont'd)	U.11 Universal 150cc	SN.3170/02			DF.1110/20	4'5½"	BG.5331/227			
(A)	U.14 150cc	SSM.2001/00			DF.9110/00	4'5½"	BG.5331/227			
FRANCIS AND BARNET	87 Falcon 199cc	SSM.2001/02			DF.9110/00	4'8"	BG.5330/847			
	88 Fulmar 150cc	SN.3170/42			DF.1110/24	4'0"	BG.5330/247			
	90 Fulmar Sports 150cc									
	89 Cruiser Twin 250cc	SSM.2001/00			DF.9111/00	3'8"				
	91 Cruiser Sports 250cc	SSM.2001/02			DF.9111/00	3'4"				
	92 Trials	SSM.2001/00			DF.9110/00	4'6"	BG.5330/1047			
INVACAR (GREEVES)	20 TE Trials 197cc	SSM.2001/00			DF.9111/00	4'8"	BG.2504/01	31-812-110	31-813-125	
	24 TE Trials 250cc									
	24 TES Trials 250cc									
(B)	{ 20 TE Trials 24 TE Trials 24 TES Trials }	SSM.5002/00 (C)			DF.9111/00	4'8"	BG.2504/01	31-812-110	31-813-125	
(B)	{ 24 MD 250cc 24 MDS 250cc 24 ME 250cc }	SSM.5002/00 (C)			DF.9111/00	4'8"	BG.2504/01	31-812-110	31-813-125	
	20 DC 248cc	SSM.2001/00 SN.3170/09 (D)	SSM.2001/03		DF.9111/00	4'8"	BG.2504/01	31-812-110	31-813-120	
	25 DC 250cc									
	25 DCX 250cc				DF.1111/16 (D)	4'8"	BG.2504/01	31-812-110	31-813-125 (D)	
	25 DD 250cc									
	32 DC 325cc									
	32 DCX 325cc									
	32 DD 325cc									
	Racer 250cc			RN.1102/03 (E)	DF.1111/15	2'2"	BG.1507/03 BG.2410/00 (F)			
	Racer Special 250cc			RN.1102/05 (E)	DF.1111/15	2'2"	BG.2410/00 (F)			
JAMES	SC.1 Scooter 150cc	SN.3170/47			DF.1110/24	3'0"	BG.5330/027			

(A)	Replaces U.11 Universal from App. April 1964	(G)	See Chart for separate Inner and Outer Flexes
(B)	U.S.A. Market only	(H)	
(C)	Trip Version Speedometer	(J)	
(D)	This equipment fitted prior to lamp reflector modification		
(E)	Mounting Ring MS.1003/00 also required	(L)	
(F)	Instrument end (Gearbox)	(M)	



MAKE	MODEL & DESCRIPTION	SPEEDOMETER		REV. INDICATOR	FLEXIBLE DRIVE (E)		GEARBOX	GEAR RING	GEARBOX PINION	SPEEDOMETER BRACKET
		MILES	KILOS		COMPLETE	LENGTH				
JAMES (Cont'd)	L.1 98cc	SN.3170/04			DF.1110/20	4'7"	BG.5330/247			
	L.1 Comet 100	SSM.2001/00			DF.9110/00	4'7"	BG.5330/847			
	L.20 199cc	SSM.2001/02			DF.9110/00	4'8"	BG.5330/847			
	L.205 199cc				DF.9110/00	4'5"	BG.5330/847			
	M.15 150cc	SSM.2001/00			DF.9110/00	4'5"	BG.5330/847			
	M.25 Twin 250cc	SSM.2001/00			DF.9111/00	3'1"				
	M.25 S Twin 250cc	SSM.2001/02			DF.9111/00	3'4"				
MATCHLESS	M.25 T	SSM.2001/00			DF.9110/00	4'6"	BG.5330/1047			
	G.50 496cc			ATRC.2652N (A)	DF.1111/15	1'10"	BG.1507/00			
	G.3 350cc	SSM.3002/00	SSM.3002/01	RSM.3003/00 (A)	DF.9110/00	5'7½"	BG.5330/257			
	G.80 500cc				DF.9111/03 (B)	2'8"	BG.1508/05 (B)			
	G.12 650cc									
	G.12 CSR 650cc									
	G.2 CSR 250cc	SSM.2001/02	SSM.2001/03		DF.9110/00	5'2"	BG.5330/857			
	G.15	SSM.3001/00	SSM.3001/01	RSM.3003/00 (B)	DF.9110/00	5'7½"	BG.5330/257			
	G.15 CS				DF.9111/03 (B)	2'8"				
	G.3C 350cc	SSM.3001/00	SSM.3001/01		DF.9110/00	5'7½"	BG.5330/1067			
	G.80 CS 500cc									
NORTON	Jubilee 249cc	SSM.2001/02	SSM.2001/03		DF.9110/00	5'2"	BG.5330/857			
	Navigator 350cc									
	E.S.B. 384cc	SSM.2001/02	SSM.2001/03		DF.9110/00	5'2"	BG.5330/257			
	88 SS 497cc	SSM.3002/00	SSM.3002/01	RSM.3003/00	DF.9110/00	5'9"	BG.5330/257			
	650/99 650cc				DF.9111/03	2'8"	BG.1508/05			
PASHLEY	Manxman 650cc									
	750 Atlas 750cc									
PASHLEY	PV/70	SN.3170/40	SN.3170/41		DF.1111/17	5'1"				
PHELOX AND MOORE	Princess Scooter 175cc	SN.3170/50 (C) SN.3170/49 (D)			DF.1111/15	4'3"				

(A)	Mounting Ring MS.1001/01 also required	(G)	
(B)	Optional Equipment	(H)	
(C)	6 Volt System	(J)	
(D)	12 Volt System	(K)	
(E)	See Chart for separate Inner & Outer Flexes	(L)	
(F)		(M)	

MAKE	MODEL & DESCRIPTION		SPEEDOMETER		REV. INDICATOR	FLEXIBLE DRIVE (D)		GEARBOX	GEAR RING	GEARBOX PINION	SPEEDOMETER BRACKET
			MILES	KILOS		COMPLETE	LENGTH				
PHELCN & MOORE (Cont'd)	35 TS Twin	249cc	SN.3170/02	SN.3170/03		DF.1111/15	3'1"				
	45 Sports Twin	324cc	SN.3170/24			DF.1111/15	3'1"				
	100 CHV Deluxe 120 CHV	598cc 649cc	SC.3303/17	SC.3303/02		DF.1111/15	5'6"	BG.2517/00			31-674-109-01
PHOENIX SCOOTERS	100										
	150										
	175										
	200		SN.3170/10			DF.1106/14	5'3"	BG.5101/011			
	S150										
	S175										
	S200										
	250 Super Deluxe T250		SN.3170/51			DF.1111/15	4'8"				
	325 Super Deluxe T325		SN.3170/10			DF.1111/15	4'8"				
SCORPION	Trials		SSM.2001/00			DF.9111/00	5'2"	BG.2504/01	31-812-110	31-813-125	
TRIUMPH	Tina Scooter	97cc	SSM.1100/00	SSM.1100/01		DF.7250/00	2'11 $\frac{1}{2}$ "				
	T 20	200cc	SSM.2001/00	SSM.2001/03		DF.9110/00	4'10"	BG.5330/847			
	T 20 SH	200cc				DF.9110/00 (A)	2'10"				
	T 20 SS	200cc	SSM.2001/00	SSM.2001/03		DF.9110/00	4'10"	BG.5330/247			
	T 20 Trials	200cc			RSM.2002/00 (B)	DF.9158/00 (B)	2'10 $\frac{1}{2}$ "				
	T 20 Scrambles	200cc									
	Tigress TS1	175cc				DF.1106/14	4'8 $\frac{1}{2}$ "				
	Tigress TW2	250cc	SN.3170/18								
	3 TA	348cc				DF.9110/00	4'10"	BG.5330/887			
	5 TA	490cc	SSM.5002/00 (C)	SSM.5002/01 (C)							
	Tiger 100 SS	500cc				DF.9110/00	4'10"	BG.5330/287			
	Tiger 100 SC	500cc	SSM.5001/00 (C)	SSM.5001/01 (C)							
	T.90 Sports	500cc									
	TR6 Trophy	649cc	SSM.5001/00 (C)	SSM.5001/01 (C)		DF.9106/01	3'4 $\frac{1}{2}$ "				
	T.120 Bonneville	649cc			RSM.3001/02	DF.9158/00	2'10 $\frac{1}{2}$ "				

(A)	Competition Model only	(G)	
(B)	Optional Equipment	(H)	
(C)	Trip Version Speedometer	(J)	
(D)	See chart for separate Inner and Outer Flexes	(K)	
(E)		(L)	
(F)		(M)	



MAKE	MODEL & DESCRIPTION	SPEEDOMETER		REV. INDICATOR	FLEXIBLE DRIVE (B)		GEARBOX	GEAR RING	GEARBOX PINION	SPEEDOMETER BRACKET		
		MILES	KILOS		COMPLETE	LENGTH						
TRIUMPH (Cont'd)	6T Thunderbird 649cc	SSM.5002/00 (A)	SSM.5002/01 (A)		DF.9106/01	3'8"						
VELOCE	Viceroy Scooter	SN.3170/32			DF.1111/17	5'7"						
	Valiant Twin 192cc	SSM.2001/00	SSM.2001/03	RC.1302/02 (C) RSM.3003/03 (CD)	DF.9111/01	2'9"						
	Valiant V Line 192cc											
	LE Vogue 192cc											
	Viper 349cc	SC.3308/00	SC.3308/01		DF.1110/22	5'3"	BG.5303/11					
	Viper Clubmans 349cc						DF.1111/15 (C)	3'0"	BG.1507/02 (C)			
	Scrambler 349cc						DF.9110/00 (D)	5'3"	BG.5303/11 (D)			
	MSS 499cc	SSM.4001/00 (D)	SSM.4001/01 (D)		DF.9110/00 (CD)	3'0"	BG.1507/02 (CD)					
	Venom 499cc											
	Venom Clubmans 499cc											
	Endurance 499cc											
	Scrambler 499cc											

(A) Trip Version Speedometer	(G)	
(B) See Chart for separate Inner & Outer Flexes	(H)	
(C) Venom Clubmans model only	(J)	
(D) Introduction of this equip. appr. April 1964.	(K)	
(E)	(L)	
(F)	(M)	



# FLEXIBLE DRIVE CHART

Flexible Drive (Complete)	Inner Flexible Drive (Only)	Outer Flexible Drive (Only)
DF.1106/14	DI.1124/00	DO.1106/14
DF.1110/00	DI.1110/00	DO.1110/00
DF.1110/20	DI.1124/00	DO.1110/20
DF.1110/21	DI.1124/00	DO.1110/21
DF.1110/22	DI.1124/00	DO.1110/22
DF.1110/24	DI.1124/00	DO.1110/24
DF.1110/30	DI.1124/00	DO.1110/30
DF.1111/15	DI.1111/00	DO.1111/09
DF.1111/16	DI.1111/00	DO.1111/10
DF.1111/17	DI.1111/00	DO.1111/11
DF.1111/19	DI.1111/00	DO.1111/13
DF.7231/00	(Non Detachable)	
DF.7250/00	(Non Detachable)	
DF.9106/01	DI.1124/05	DO.9106/01
IF.9110/00	DI.1124/05	DO.9110/00
DF.9110/02	DI.1124/05	DO.9110/02
DF.9111/00	DI.1124/06	DO.9111/00
DF.9111/01	DI.1124/06	DO.9111/01
DF.9111/02	DI.1124/06	DO.9111/02
DF.9111/03	DI.1124/06	DO.9111/03
DF.9158/00	DI.1124/07	DO.9158/00

The above chart shows the code numbers of the separate inner and outer flexible drives which form the complete flexible drives listed in the specification section of this booklet.

# SMITHS *Motor Cycle Equipment*

Illustrated on these pages is a representative range of the most popular types of motor cycle equipment manufactured by Smiths.

Note: All Smiths motor cycle speedometers are available to register either miles or kilometers per hour.



## Speedometer 3" Chronometric Type

The movement is contained in a heavy pressed steel case, specially treated internally and externally against rust. The case is finished in black enamel and the screwed-on bezel is polished chromium plate. Also available with flange bezel and cadmium finished case for nacelle or headlamp installation.

Dial black with white figures and available with or without internal illumination.



## 60 mm. Speedometer

Nemag movement also for light-weight motor cycles. Strap or handle-bar fixing. Variety of dial colourings to choose from.

## 60 mm. Revolution Indicators

Revolution Indicators to match the 60 mm. speedometer are available. Maximum revolutions per minute, ratio and rotation available in any combination of the following:

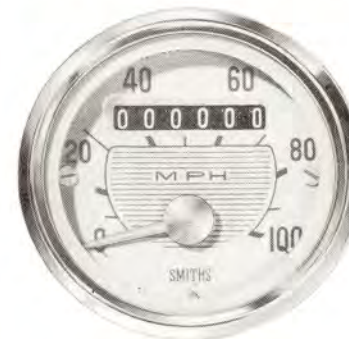
MAX. R.P.M. 10,000 12,000 16,000

RATIO 2:1 4:1 4:1

ROTATION Clockwise or anti-clockwise.



For full details of matching  
60 and 80 mm Revolutions Indicators.  
see separate leaflet Ref. No. S.909.



## 80 mm. 'Shallow' Speedometer.

Magnetic Type with Anti-vibration mounting incorporated in the instrument case and fully geared counter assembly to eliminate 'slip' or 'jumping'.

The movement is contained in a pressed steel case, specially treated internally and externally against rust. White figures, red pointer on duo-grey dial.

Provision for internal illumination. Suitable Flexible Drive, DF.9110/00 or DF.9111/00 Series.

## 60 mm. 'Shallow' Speedometer.

Magnetic Type for Lightweight Motor Cycles. Anti-vibration mounting incorporated in the instrument case and fully geared counter assembly, to eliminate 'slip' or 'jumping', are important features of these new instruments.

Light grey dial with dark grey figures and red pointer. Polished Stainless Steel bezel. Internal illumination.

Suitable Flexible Drive, DF.9110/00 or DF.9111/00 Series.



## 3" Revolution Indicators

Chronometric movement.

Black dial, white figures and pointer, chrome bezel.

Right angle drive can be built in. A maximum hand may be incorporated if required.

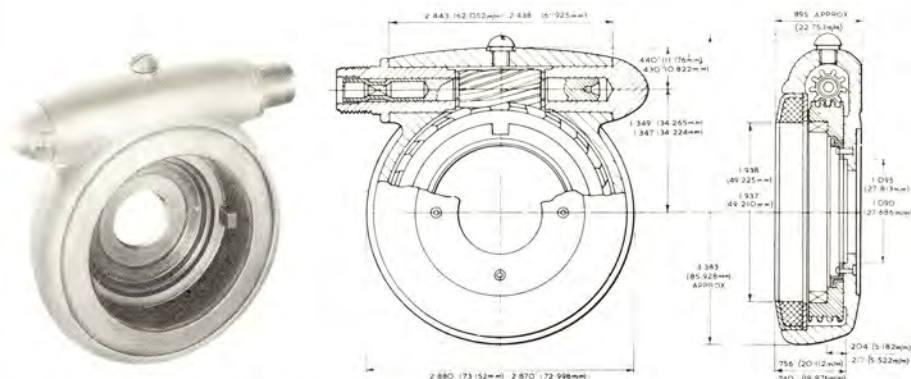
Maximum revolutions per minute, ratio and rotation available in any combination of the following:

MAX. R.P.M. 8,000 9,000 10,000 12,000

RATIO 2:1 4:1 4:1 4:1

ROTATION Clockwise or anti-clockwise





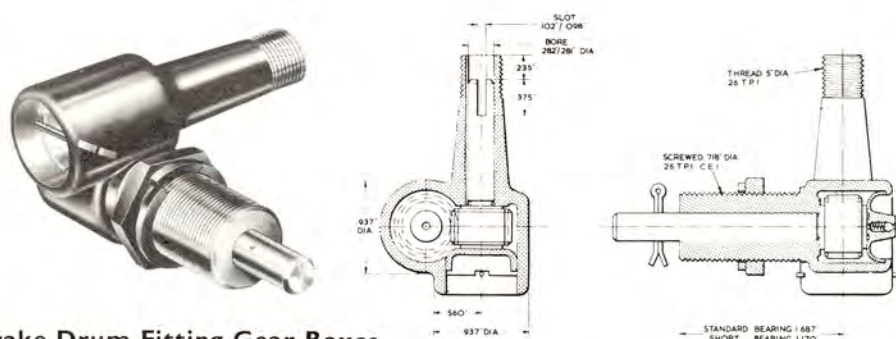
This hub gear box has a thicker body section than those in the BG. 5303 Series (Previously 52283 1-49 Series) and uses the larger felt seal. It can be used where the hub is slotted to provide the necessary engagement or where other provision can be arranged. Clockwise or anti-clockwise input. Ratios: 1:1 & 2:1 Suitable Flexible Drive DF.9110 or DF.9111 Series.

**Gear Box Code No. BG. 1508 Series (Replacing 70549 Series)**

These gear boxes reverse the rotation of the shaft to which they are attached. The rotation is determined by looking immediately on to the end of the engine spindle with which the gear box or flexible drive is engaged.

\*Plain phosphor bronze bearings. Ratios 1 : 1 and 2 : 1.

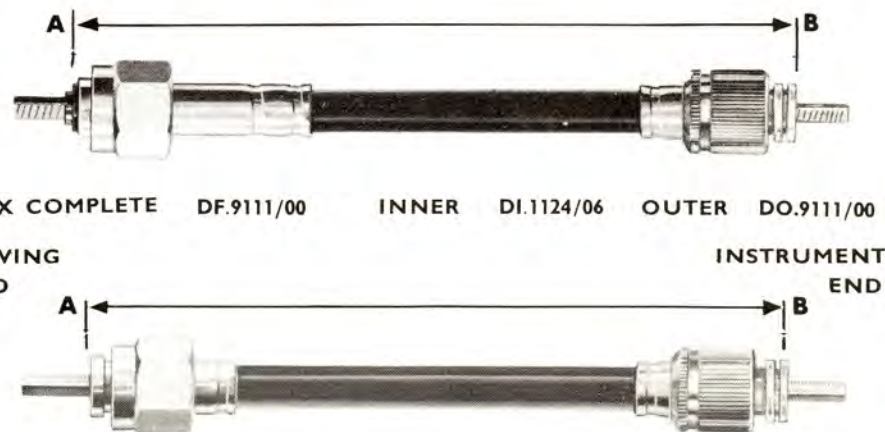
Suitable Flexible Drive DF. 1111/15 (Black PVC) or DF. 1111/12 (Grey PVC)



### Basic Code

BG.2504 Series	(Replacing 34159 Series)	Short Reach.	Right Hand Gears	Ratios of 5:12. 8:12.
BG.2511 Series	(Replacing 70458 Series)	Long Reach.	Left Hand Gears	
BG.2500 Series	(Replacing 25224 Series)	Long Reach.	Right Hand Gears	
BG.2510 Series	(Replacing 70458 Series)	Short Reach.	Left Hand Gears	

Boxes available for either external gear ring drive or for internal brake-drum fitting, with left or right hand gears to maintain clockwise output.  
Suitable Flexible Drive for these right angle gear boxes: DF. 1111/15 (Black PVC) or DF. 1111 12 (Grey PVC)



The nominal length of a flexible drive is measured between points 'A' and 'B'



THREE WHEELERS AND INVALID CARRIAGES

MAKE	MODEL & DESCRIPTION	SPEEDOMETER		REV. INDICATOR	FLEXIBLE DRIVE (A)		GEARBOX	GEAR RING	GEARBOX PINION	GEARBOX BRACKET
		MILES	KILOS		COMPLETE	LENGTH				
W & F BARRETT	Invalid Carriage	SC.1101/08			DF.1111/17	3'0"	BG.2507/01	31-812-303-02		
BOND	Mk. 'G' 2/3 Seater Tourer									
	Mk. 'G' 2/3 Seater Coupe	SN.4352/00 (B)			DF.1111/00	8'6"				
	Mk. 'G' 4 Seater Saloon	SN.4352/01								
	Mk. 'G' Ranger Van									
	Mk. 'G' Estate Car									
SCOOTER-CAR (HUNSLET)	3 Wheeler	SN.3170/05			DF.1111/02	6'9½"				
STANLEY ENGINEERING	Mk. 7 Invalid Carriage	SN.3170/21			DF.1111/00	8'0"	BG.2504/01	31-811-517-02	41-280-118-00	31-354-601-00
TIPPEN	Delta 5A Invalid Carriage	SN.3170/33			DF.1111/15	8'0"	BG.2507/09		41-280-118-00	

(A) For separate Inner & Outer Flexes See Chart	(G)
(B) Fitted to Van only	(H)
(C)	(J)
(D)	(K)
(E)	(L)
(F)	(M)

# SMITHS

## MOTOR ACCESSORY DIVISION

The Motor Accessory Division of **S. Smith & Sons (England) Ltd**

**HEAD OFFICE**  
**CRICKLEWOOD WORKS**  
**LONDON NW2**

Telephone: Gladstone 3333

**SALES AND SERVICE**  
**50 OXGATE LANE**  
**LONDON NW2**

Telephone: Gladstone 8030

Telegrams: Speedofac, London. Telex 22671.